



Oak Park Conservatory Master Plan Update

Wednesday, May 13, 2026

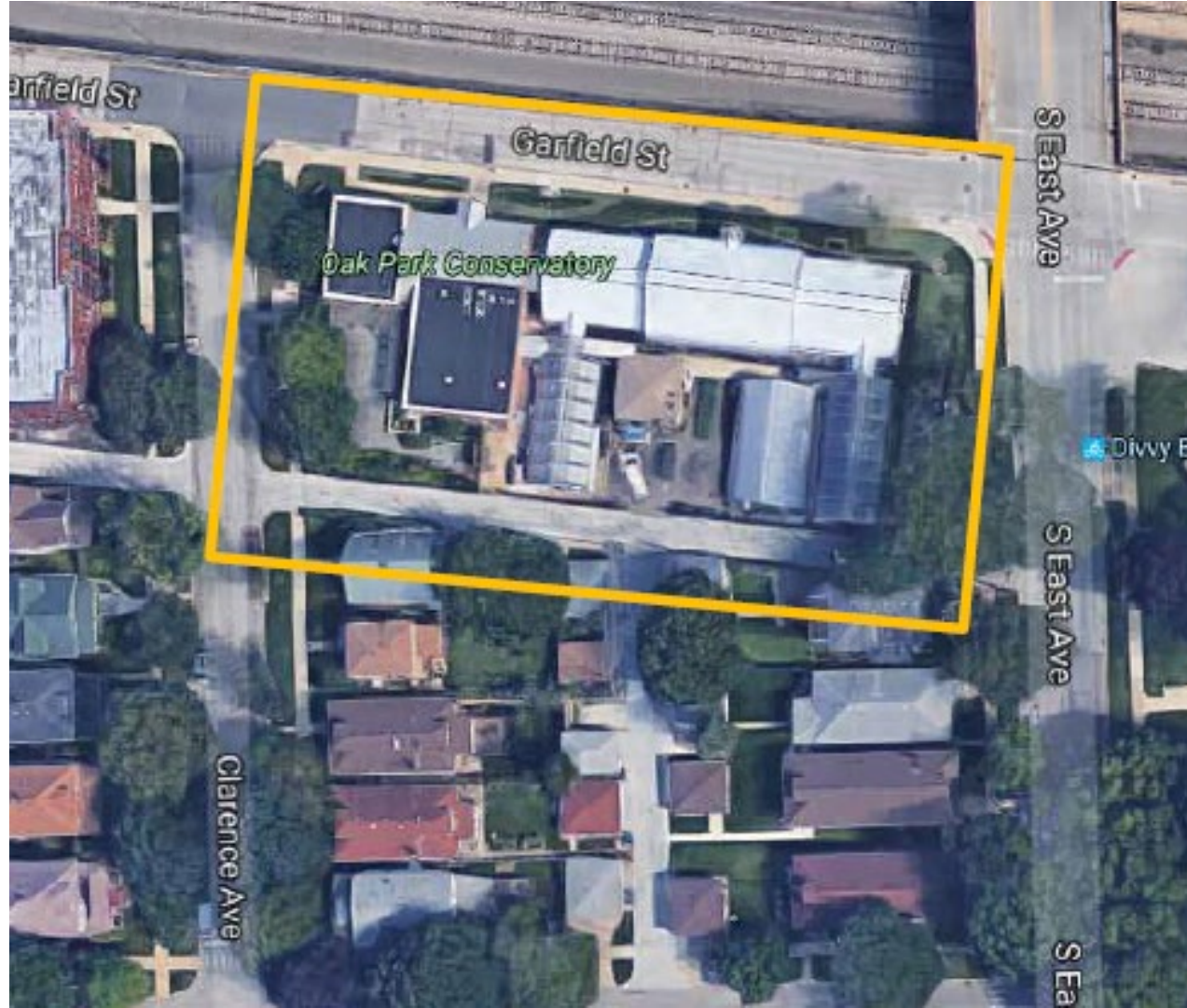




Agenda:

- Timeline of Improvements
- Look at Master Plans from 2008 & 2017
- Recent Updates or Changes
- Future Improvements
- I290 Work





SITE CONTEXT



PARK DISTRICT
of OAK PARK

TIMELINE:

- 1929 The Edwardian-style Glass Structure was built
Over the years the building fell into neglect
- 1970 Citizens lead a successful drive to preserve the Conservatory
- 2000 Conservatory Center was opened with expanded space for public events
- 2005 Conservatory added to the National Register of Historic Places
- 2008 PDOP carried our master planning process
- 2011 Rubenstein Memorial Garden was opened
- 2015 Elsie Jacobsen Discovery Garden and East Ave Bioswale opened
- 2017 Master Plan Revisited
- 2019 Solar and water harvesting added to Conservatory
- 2023 Historic windows rebuilt
- 2024 Historic Door was rebuilt



Master Plan 2008



PARK DISTRICT
of OAK PARK



OAK PARK CONSERVATORY PARK DISTRICT OF OAK PARK

MASTER PLAN RECOMMENDATION



THOMPSON DYKE & ASSOCIATES

NOVEMBER 2008

East
Side:

Before



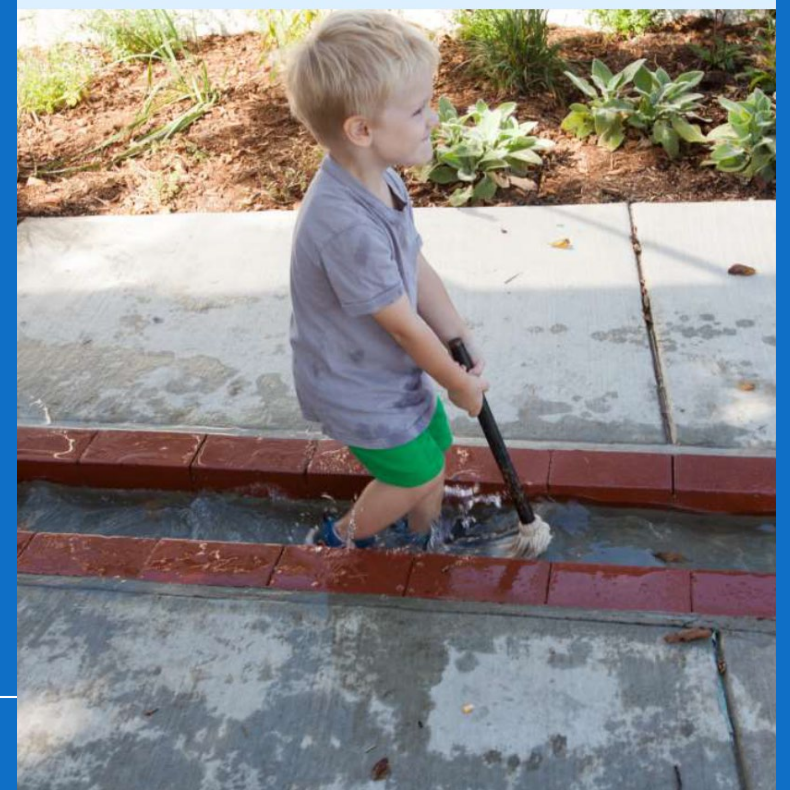
PARK DISTRICT
of OAK PARK

East
Side:

After



PARK DISTRICT
of OAK PARK

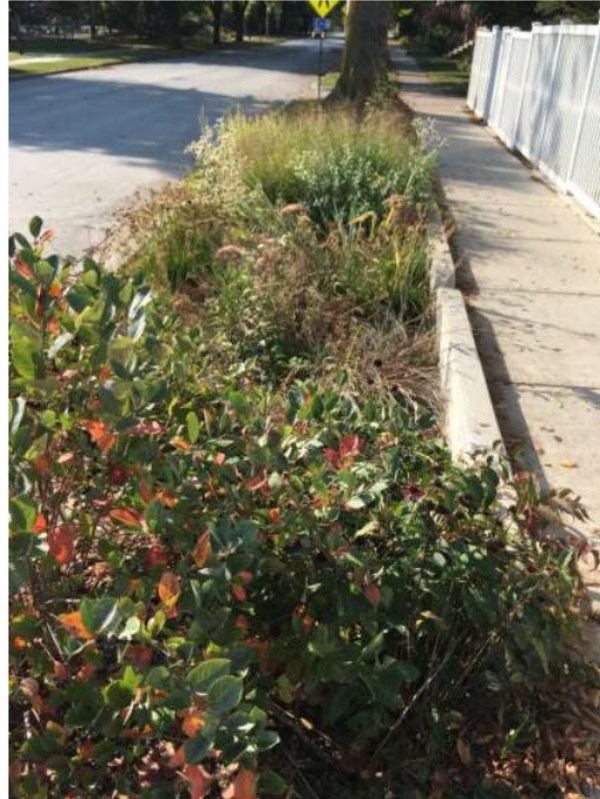


EAST SIDE:

AFTER



PARK DISTRICT
of OAK PARK

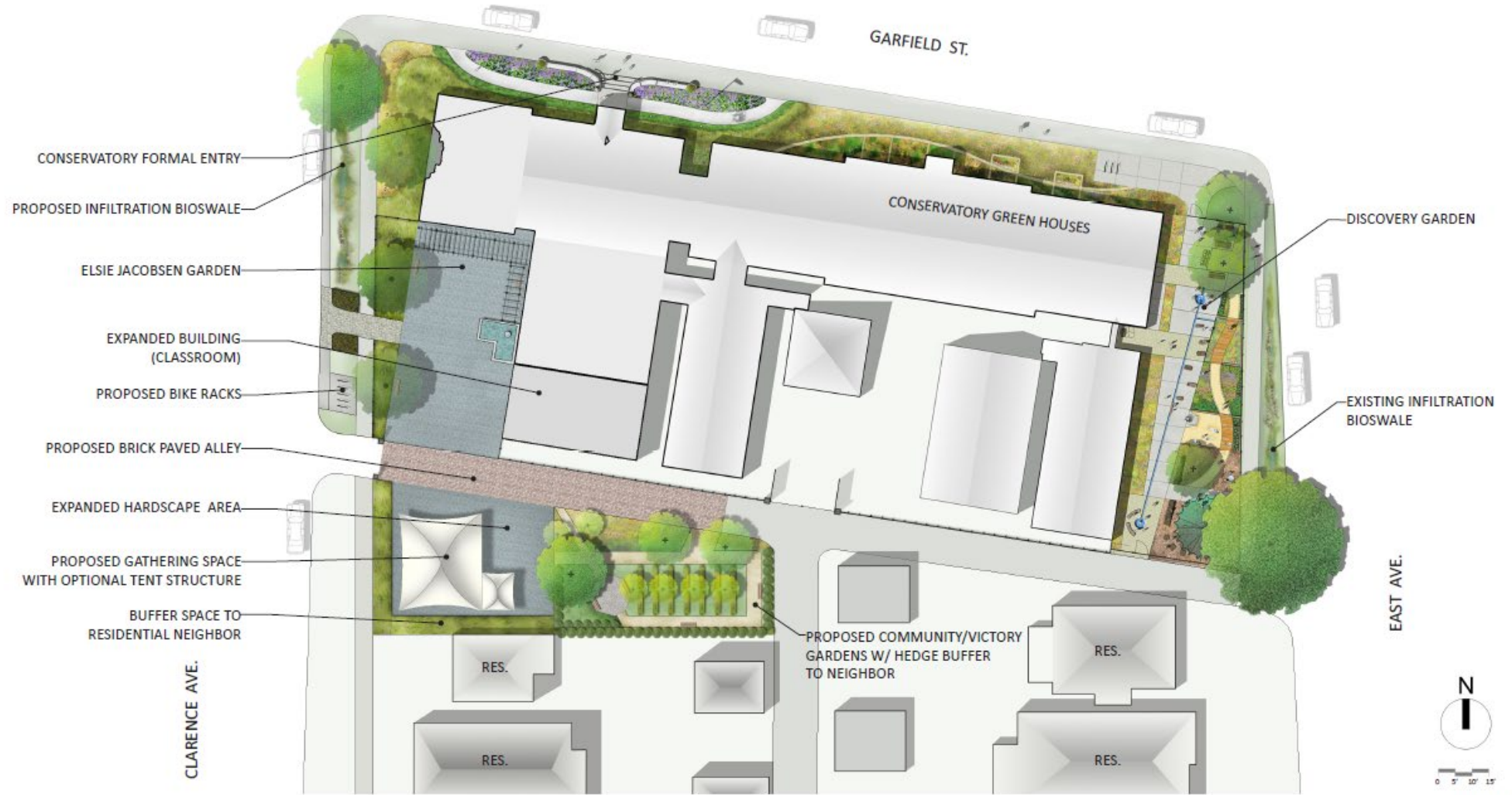


BIOSWALE



PARK DISTRICT
of OAK PARK

Master Plan 2017



PARK DISTRICT
of OAK PARK



11.30.2017

Historic Door: Before



PARK DISTRICT
of OAK PARK

Historic
Door:

After



PARK DISTRICT
of OAK PARK

Future Improvements

- Home is no long available for purchase and thus garden cannot be expanded
- Reglazing conservatory showrooms
- Update greenhouse environmental controls to increase sustainability
- Fountain replace/repair in Rubenstein Garden
- ADA updates to Tropical Room walkways
- Pervable pavers



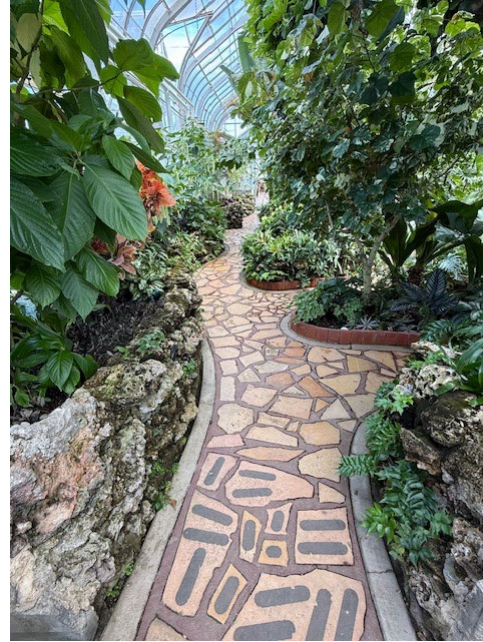


GLAZING

Last replaced 50+ years ago



PARK DISTRICT
of OAK PARK



ADA ACCESSIBILITY

Need to build up showroom and widen paths



PARK DISTRICT
of OAK PARK

MAKE PATH ADA ACCESSIBLE BY ADDING RAMPS

If a 5% slope cannot be achieved, follow ADAAG 405 for ramps.

OPTION 1A: RAMP AT BEGINNING

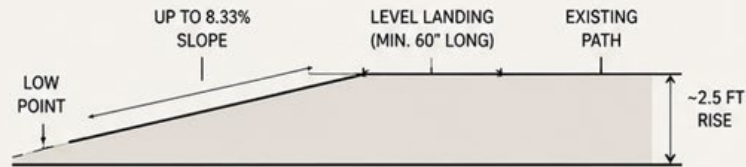


- Ramp added at the beginning to gradually bring path up ~2.5 feet.
- Rest of path remains the same.
- ADA-compliant ramp with handrails.

IF A 5% SLOPE CANNOT BE ACHIEVED:

Follow ADAAG 405 (Ramps) which allows a running slope up to 8.33% for short rises with level landings.

- Maximum 8.33% slope for runs up to 30" (2.5 ft) rise
- Level landings at top and bottom – minimum 60" long
- Handrails on both sides
- Edge protection if drop-offs occur



OPTION 1B: RAMP AT END

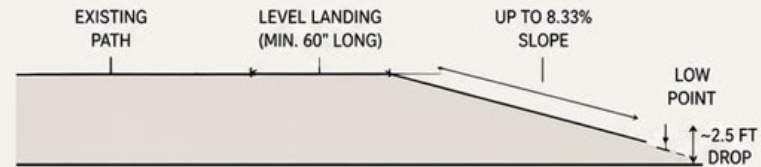


- Ramp added at the end to gradually drop down ~2.5 feet.
- Rest of path remains the same.
- ADA-compliant ramp with handrails.

IF A 5% SLOPE CANNOT BE ACHIEVED:

Follow ADAAG 405 (Ramps) which allows a running slope up to 8.33% for short rises with level landings.

- Maximum 8.33% slope for runs up to 30" (2.5 ft) rise
- Level landings at top and bottom – minimum 60" long
- Handrails on both sides
- Edge protection if drop-offs occur

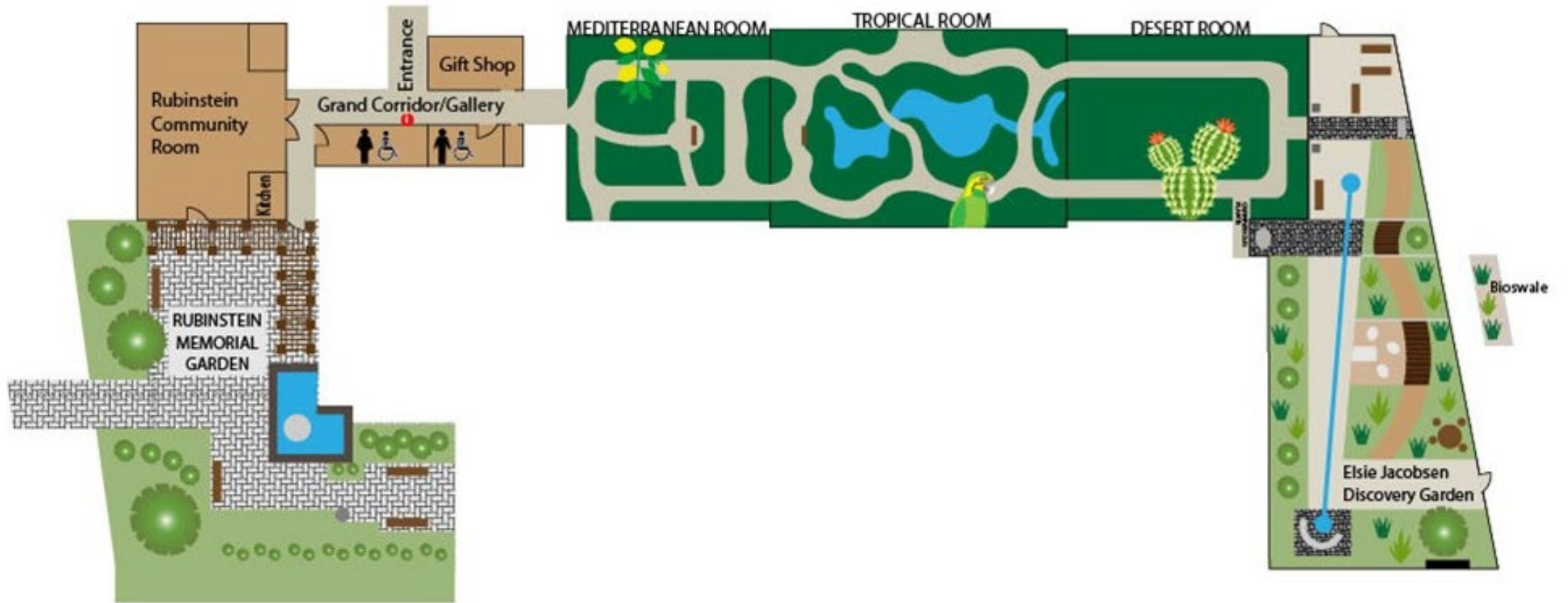


ADAAG 405 – RAMPS SUMMARY

When a 5% (1:20) slope cannot be achieved, ADAAG 405 allows ramps with a running slope up to 8.33% (1:12) for changes in level up to 30 inches (2.5 feet). Ramps must have level landings at top and bottom at least 60 inches long, handrails on both sides, and edge protection where there are drop-offs.



PARK DISTRICT
of OAK PARK



Discussion



PARK DISTRICT
of OAK PARK