

# Field Park

Master Plan  
Update &  
Alternatives  
January 21, 2025



**PARK DISTRICT**  
of OAK PARK



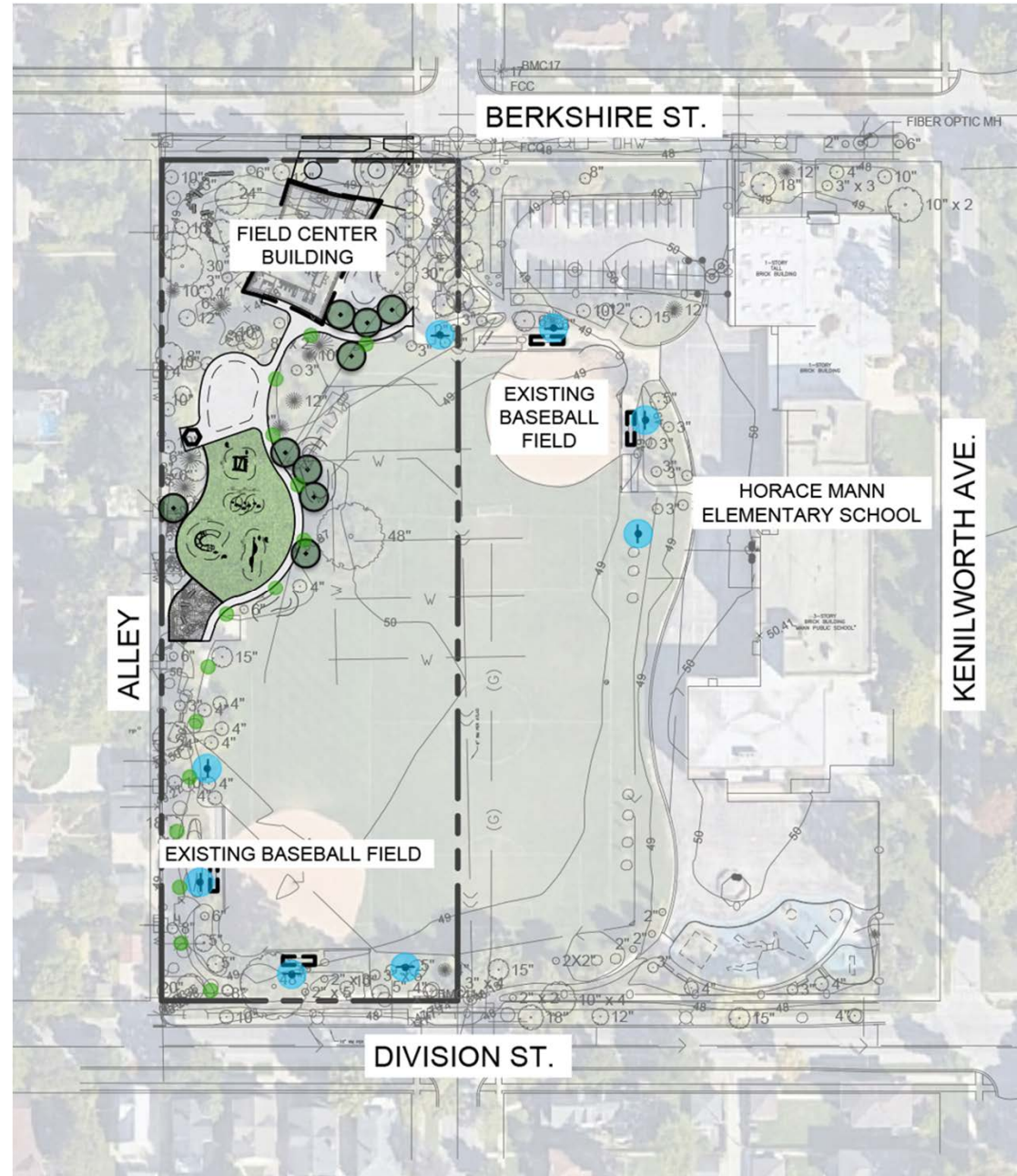


**PARK DISTRICT**  
of OAK PARK



# Feedback Discussion

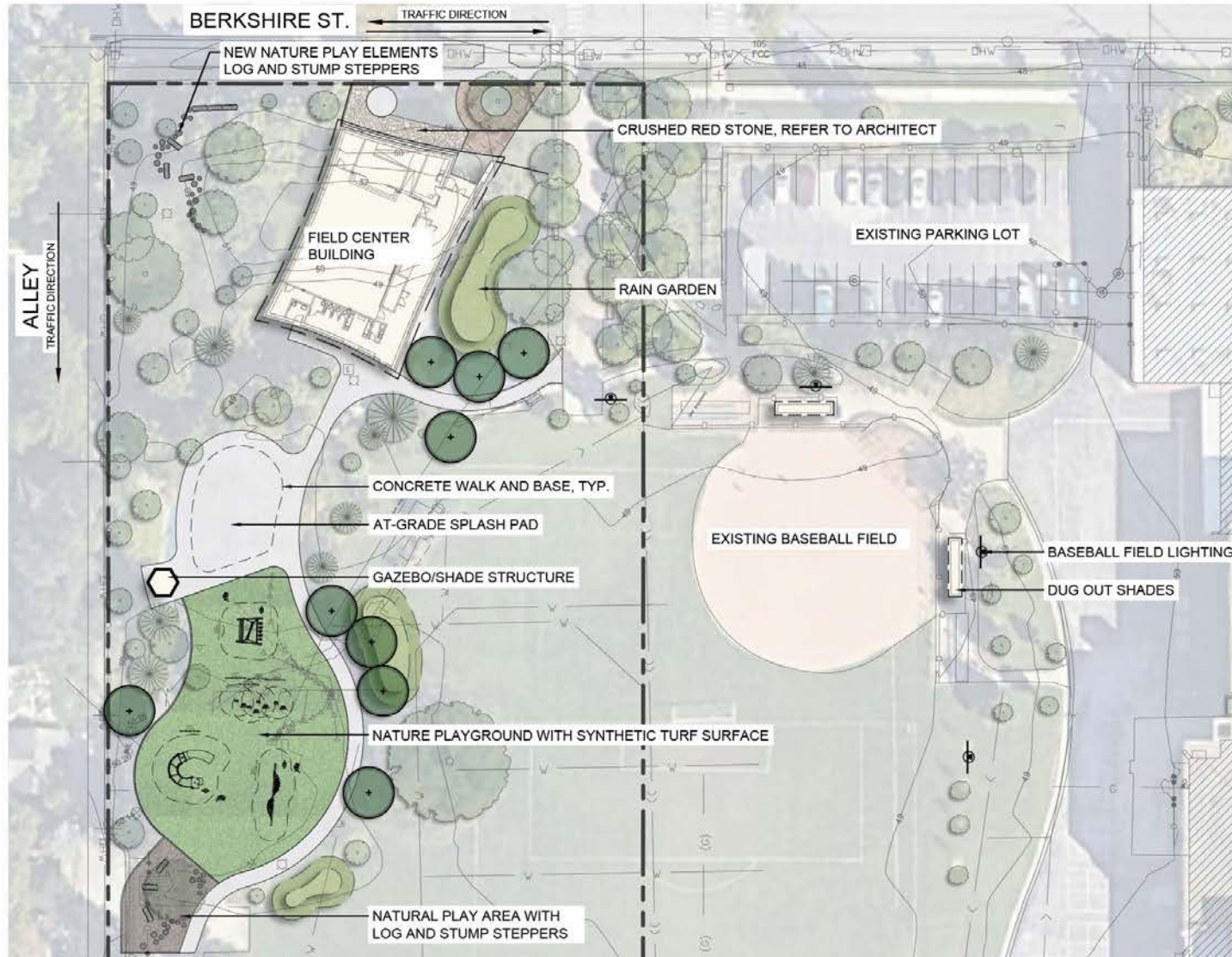
- Berm
- Trees
- Sightlines
- Playground
- Green Space
- Picnic Pavilion
- Safety
- Traffic
- Access to Park
- Sports Field Lighting











**LEGEND:**

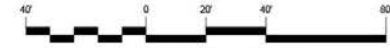
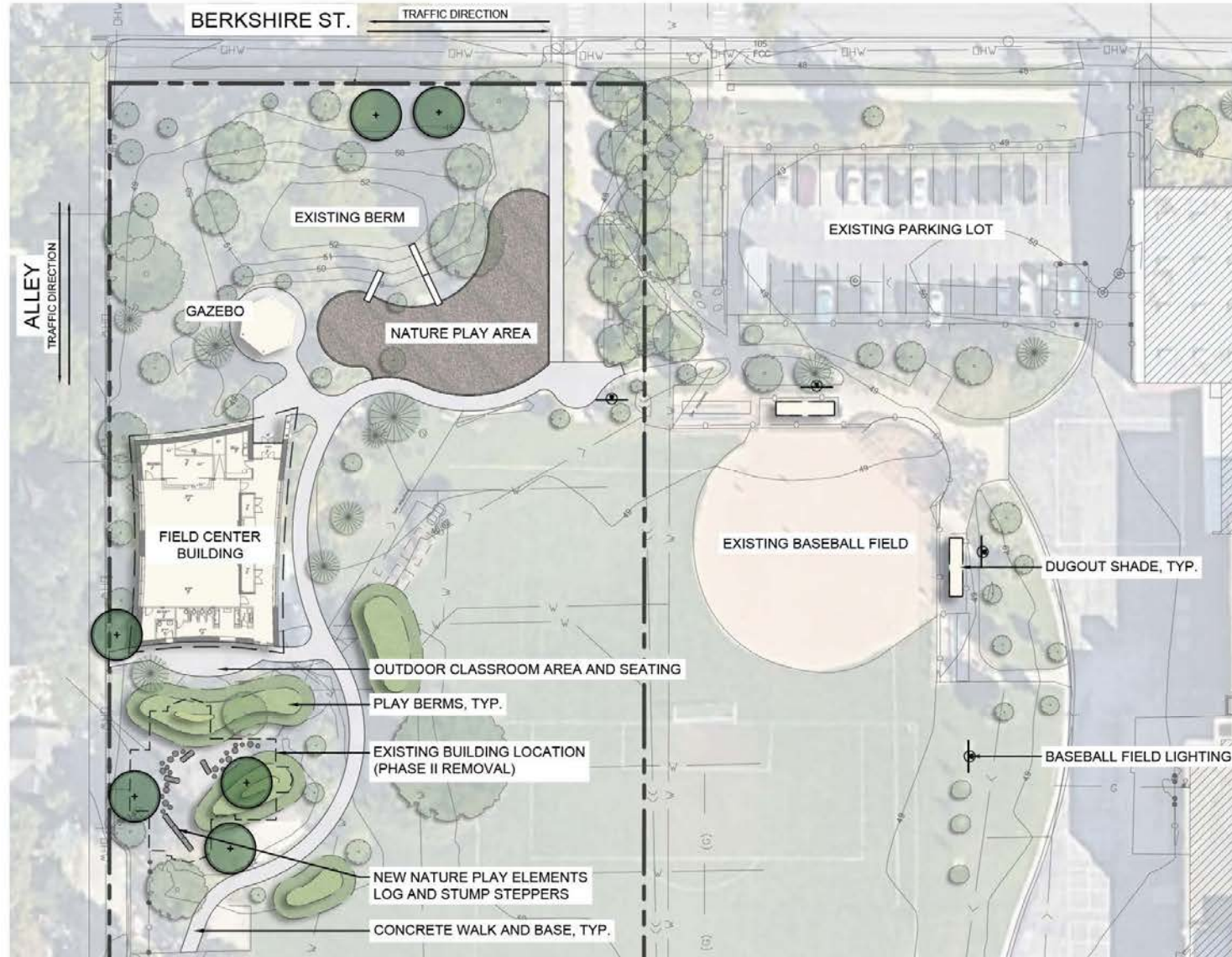
-  BASEBALL FIELD LIGHTING
-  PEDESTRIAN LIGHTING



**LEGEND:**









-  PROPERTY LINE
-  EXISTING BUILDING
-  EXISTING TREE TO REMAIN
-  BUILDING
-  CONCRETE WALK AND BASE
-  PERMEABLE PAVERS
-  ARTIFICIAL TURF
-  CRUSHED RED STONE, REFER TO ARCHITECTURAL DRAWINGS
-  SHADE TREE
-  MULCH, 3" DEPTH
-  LIGHT





Scale: 1 inch = 40 feet

**LEGEND:**

-  PROPERTY LINE
-  EXISTING BUILDING
-  EXISTING TREE TO REMAIN
-  BUILDING
-  CONCRETE WALK AND BASE
-  SHADE TREE
-  MULCH, 3" DEPTH
-  LIGHT





Option A

Berm	6,428 sf
Tree Loss	6
Walk Distance	65 feet



Option B

Berm	9,428 sf
Tree Loss	11 (7 memorial)
Walk Distance	266 feet