

Field Park

Master Plan
Update



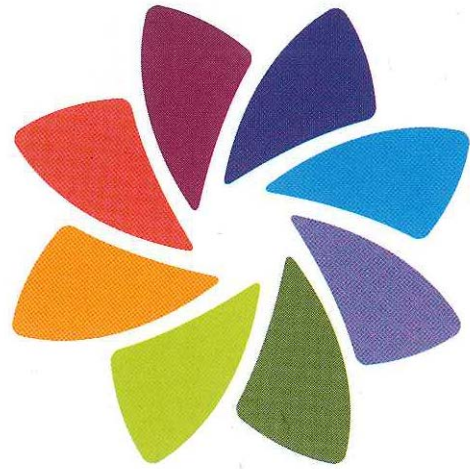
PARK DISTRICT
of OAK PARK



Plan Update – Agenda

- Introduction
- Field Park Field House Plans
- Review Previous Plan from 2014
- What Improvements You Would Like To See
 - Why do we like Field Park
 - Preference Input for park Elements
 - General Field Park Comments for improvement





PARK DISTRICT
of OAK PARK

Introduction

- PDOP Master Plan Process
- 10-year Evaluation
- Community / Neighbor Input

the new field center



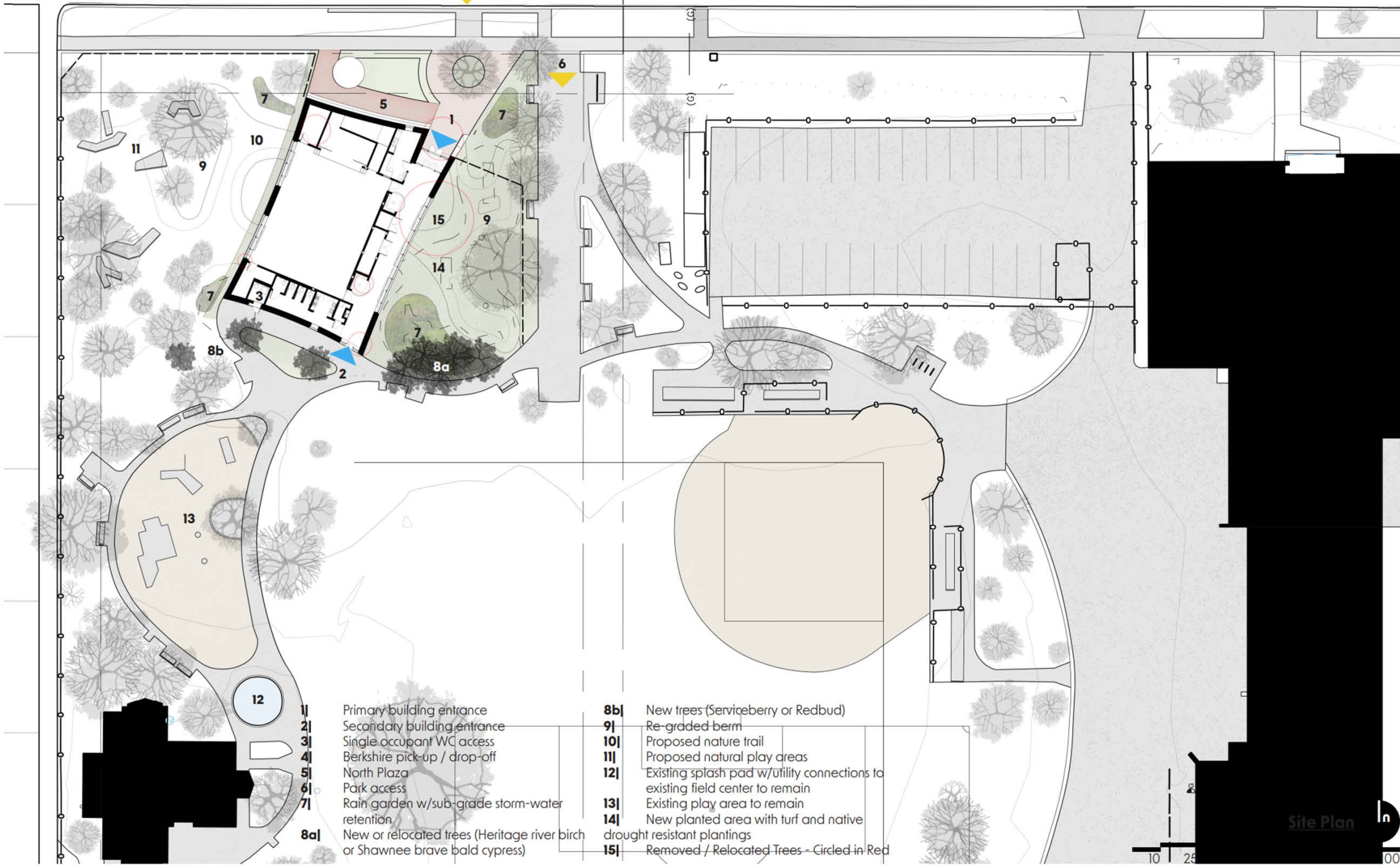
PARK DISTRICT
of OAK PARK



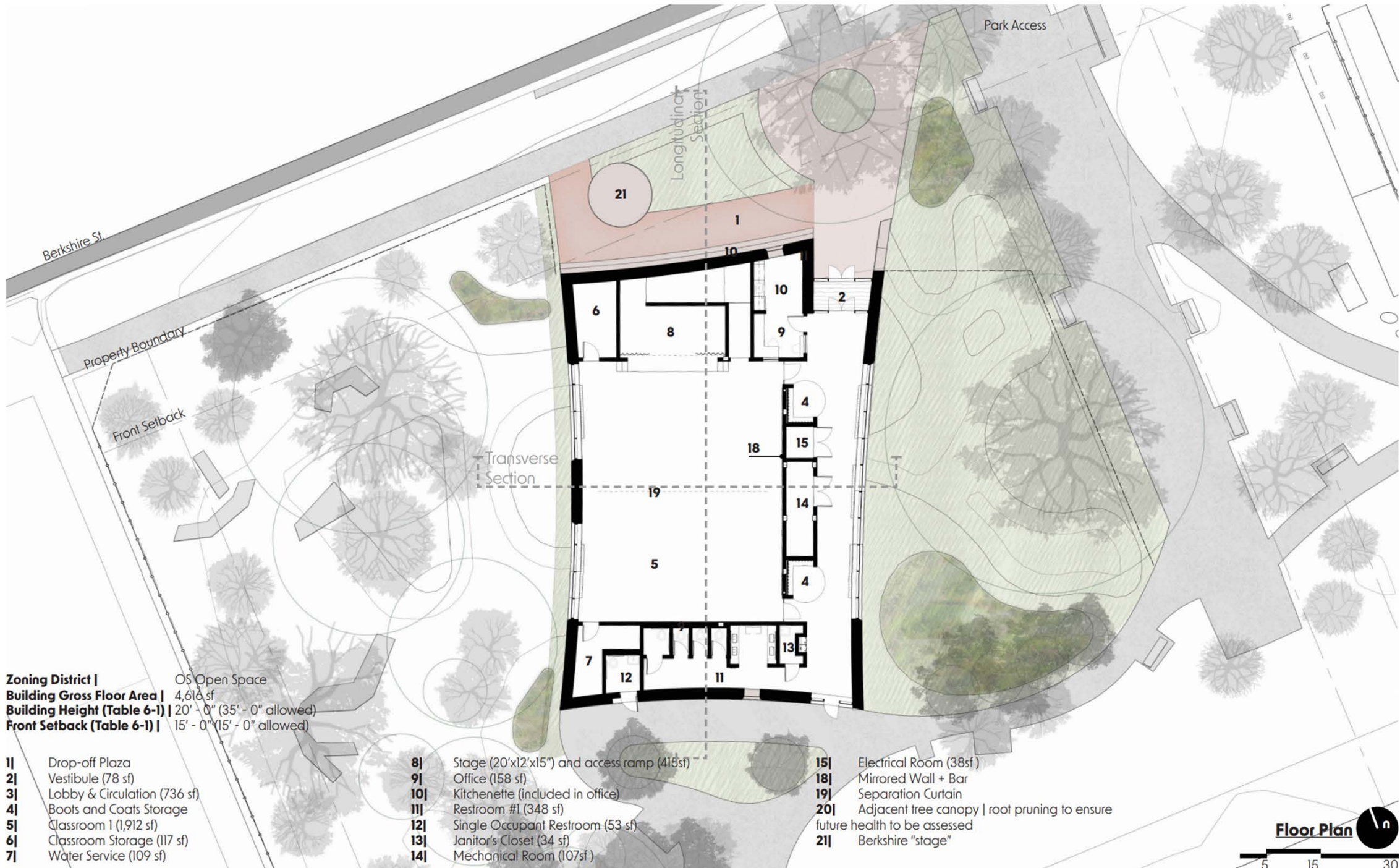
field center



field center



- 1| Primary building entrance
- 2| Secondary building entrance
- 3| Single occupant WC access
- 4| Berkshire pick-up / drop-off
- 5| North Plaza
- 6| Park access
- 7| Rain garden w/sub-grade storm-water retention
- 8a| New or relocated trees (Heritage river birch or Shawnee brave bald cypress)
- 8b| New trees (Serviceberry or Redbud)
- 9| Re-graded berm
- 10| Proposed nature trail
- 11| Proposed natural play areas
- 12| Existing splash pad w/utility connections to existing field center to remain
- 13| Existing play area to remain
- 14| New planted area with turf and native drought resistant plantings
- 15| Removed / Relocated Trees - Circled in Red



Zoning District | OS Open Space
Building Gross Floor Area | 4,616 sf
Building Height (Table 6-1) | 20' - 0" (35' - 0" allowed)
Front Setback (Table 6-1) | 15' - 0" (15' - 0" allowed)

- 1| Drop-off Plaza
- 2| Vestibule (78 sf)
- 3| Lobby & Circulation (736 sf)
- 4| Boots and Coats Storage
- 5| Classroom 1 (1,912 sf)
- 6| Classroom Storage (117 sf)
- 7| Water Service (109 sf)

- 8| Stage (20'x12'x15") and access ramp (415sf)
- 9| Office (158 sf)
- 10| Kitchenette (included in office)
- 11| Restroom #1 (348 sf)
- 12| Single Occupant Restroom (53 sf)
- 13| Janitor's Closet (34 sf)
- 14| Mechanical Room (107sf)

- 15| Electrical Room (38sf)
- 18| Mirrored Wall + Bar
- 19| Separation Curtain
- 20| Adjacent tree canopy | root pruning to ensure future health to be assessed
- 21| Berkshire "stage"



2015 Master Plan

- Playground for 8+ age
- Playground -8 age
- Splash Pad w/ collection cistern
- Fitness Station along path
- Picnic area
- Trees for shade
- Shelter
- Bocce Ct. (has been removed)



School Improved Playground



Field Park Visioning



Field Park Visioning



Field Park Visioning



Field Park Visioning



THEMED WATER PLAY

POP JET ACTIVATED SPLASH PAD

Field Park Visioning



Adult Fitness



Fitness Playground



Fitness Grouped Stations



Fitness Path Stations

Current Plan – Public Input

What's on Your Mind?

- What Park Features Are We Missing?
- Are there Improvements you would like to see?
- Are There Park Feature of Concern?

