



Andersen Park

Oak Park, Illinois

Final Master Plan

DESIGN ELEMENTS:

1. Welcoming Park Entry:

- Northwest Gateway
- Develops a Park Identity
- Creates sense of arrival/deters "dog run"
- Ornamental Fencing (Division Street and Hayes Avenue)

2. Outdoor Education Area:

- Painted Alphabet
- Classroom Seat Wall
- Boulder Seats
- Rain Garden
- Interpretive Signs
- Raised Planter/Science Area
- Photo Board Opportunity
- Bike Parking Area

3. Picnic Area with Shade Sail:

- Decomposed Granite Surface
- Accessible Picnic Table/Picnic Table
- Litter Receptacle

4. Fitness Station Area:

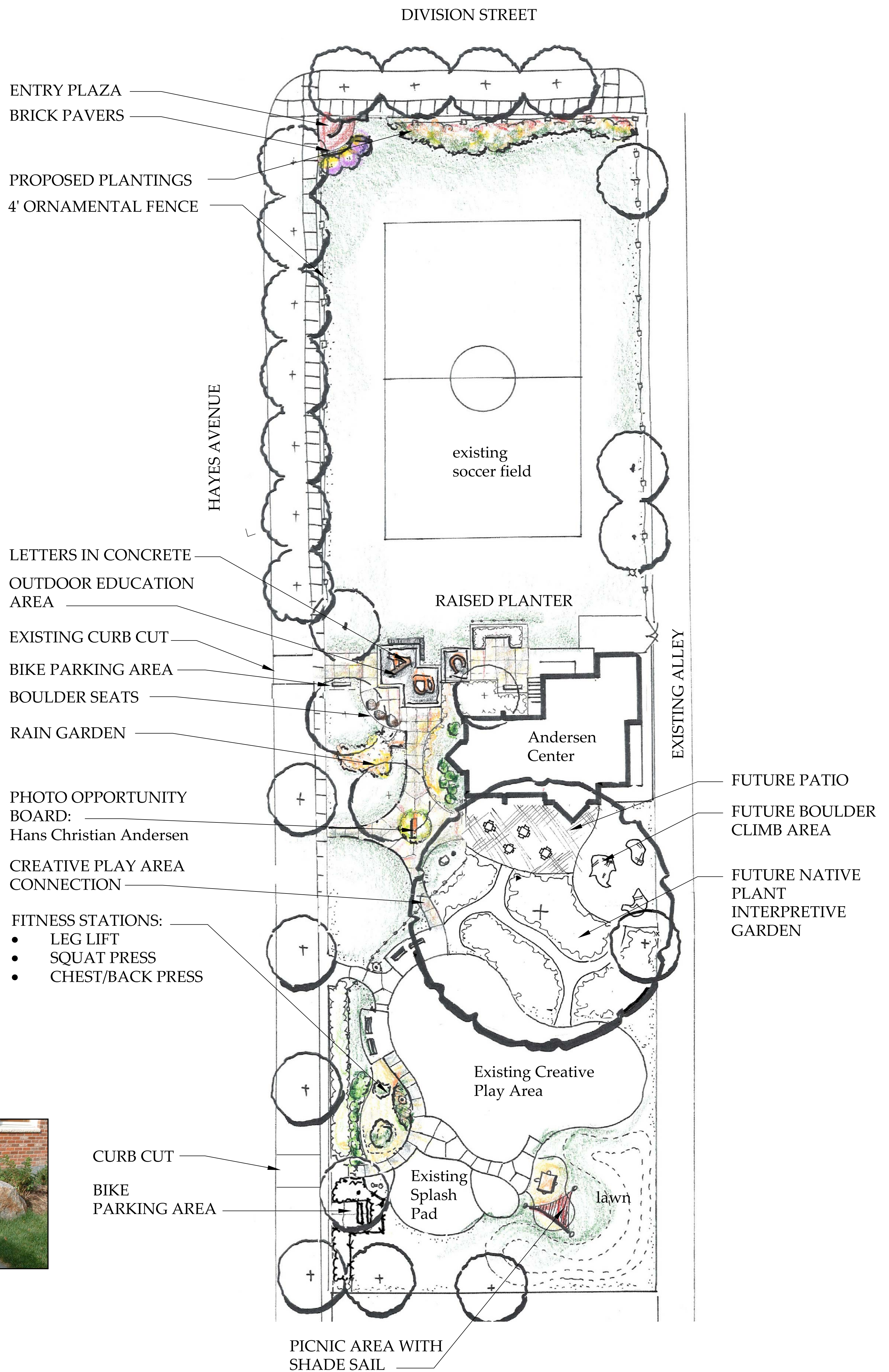
- Two Equipment Features
- Decomposed Granite Surface

5. Existing Willow Dome Trees removed.

6. New Curb Cut and Bike Parking Area

7. Optional Items:

- Soccer Field Irrigation
- Poured-in-place Surface for existing Creative Play Area
- New Creative Play Apparatus



Colored Concrete Letters



Alphabet



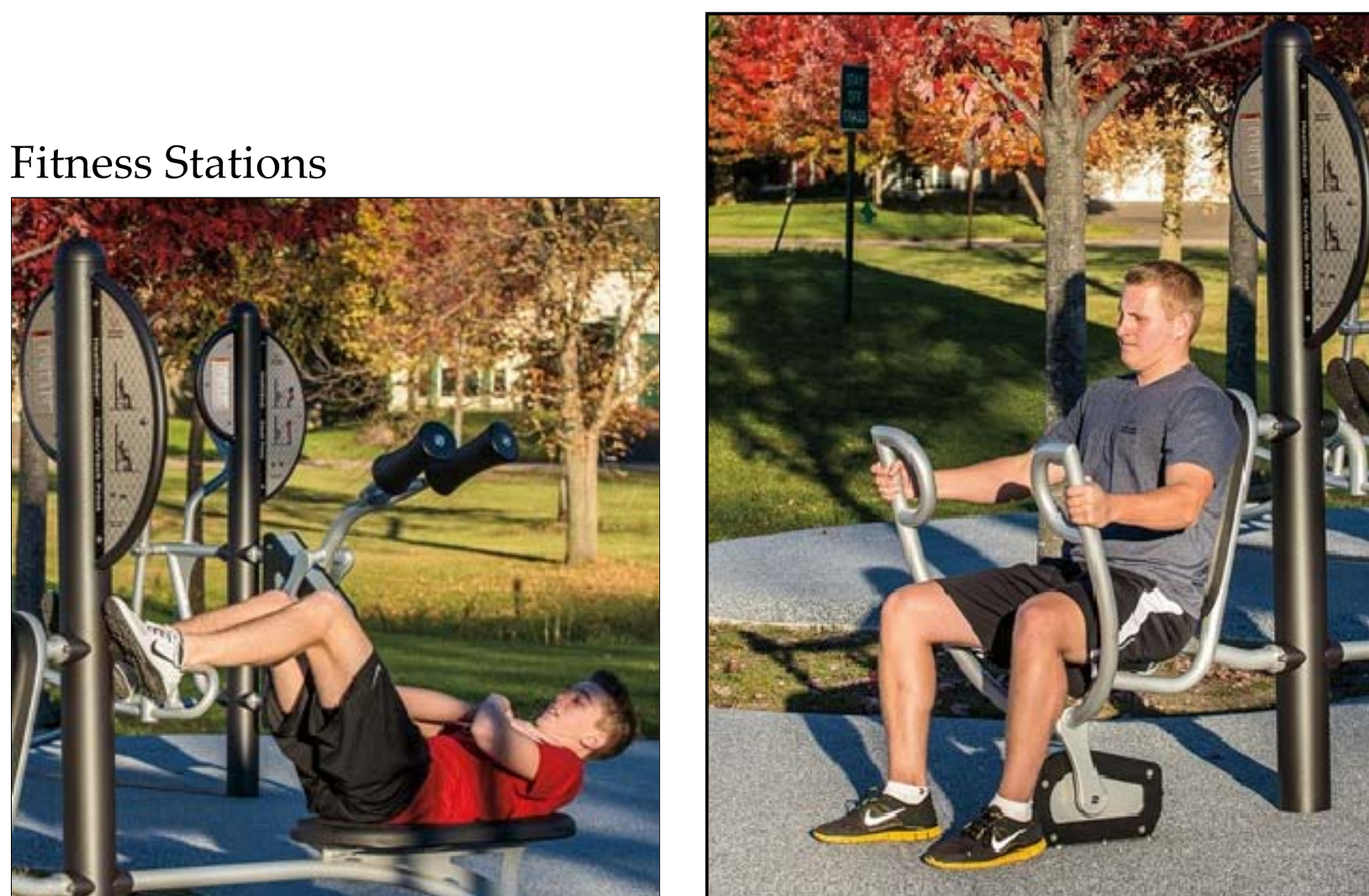
Boulder Seats



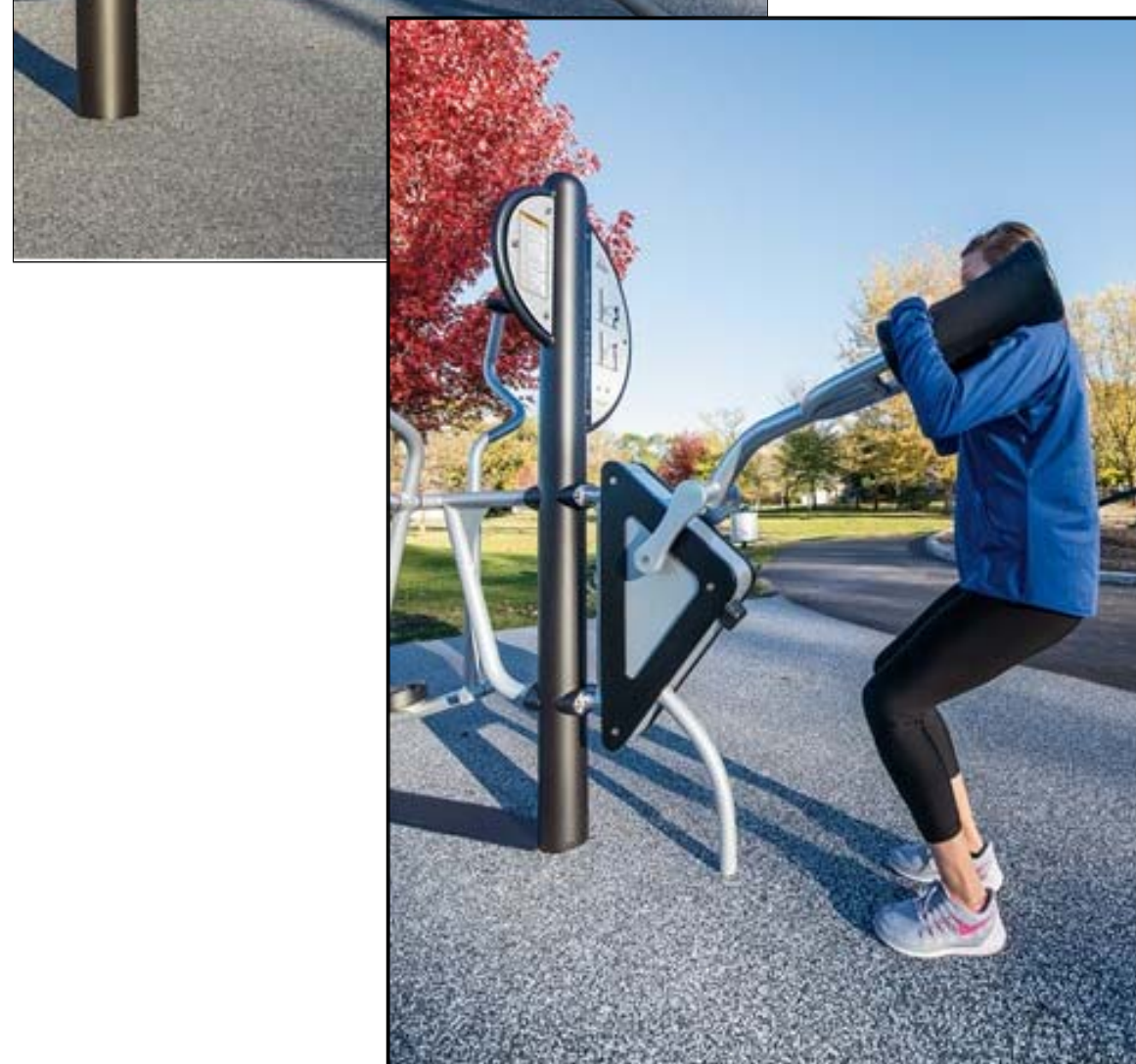
Raised Garden



Seat Wall



Fitness Stations



Shade Sail



Photo "Op" Board



Entry Plaza Walls

