



Rehm Park Master Plan Update

September 21st, 2016





Tonight:

An update on the Master Plan from 2008

The “Plan” has to be flexible for changes over time

What has been added or changed since 2008

(Approx. \$500k Improvements since 2008 detail later in presentation)

A look at some suggestions that have been made since 2008

Discussion

Note: This meeting is about the park not about the Pool. There are no funds available for the pool. When they are available there will be a public process to discuss.



First who are we? Altamanu



- 12 Master Plans and many built projects for the PDOP, the Village and D97



And the Elsie Jacobsen Discovery Garden



- Josephine, John, and James at Altamanu are all Oak Parkers



PARK DISTRICT
of OAK PARK

Rehm Park Site Master Plan November 2008



TD



PARK DISTRICT
of OAK PARK

Rehm Park Site Master Plan November 2008



TD



PARK DISTRICT
of OAK PARK

Approx. \$500k on Improvements since 2008

Divvy Station
VOP

Sand Volley Ball

Train rehabbed &
Play Ground
improvements

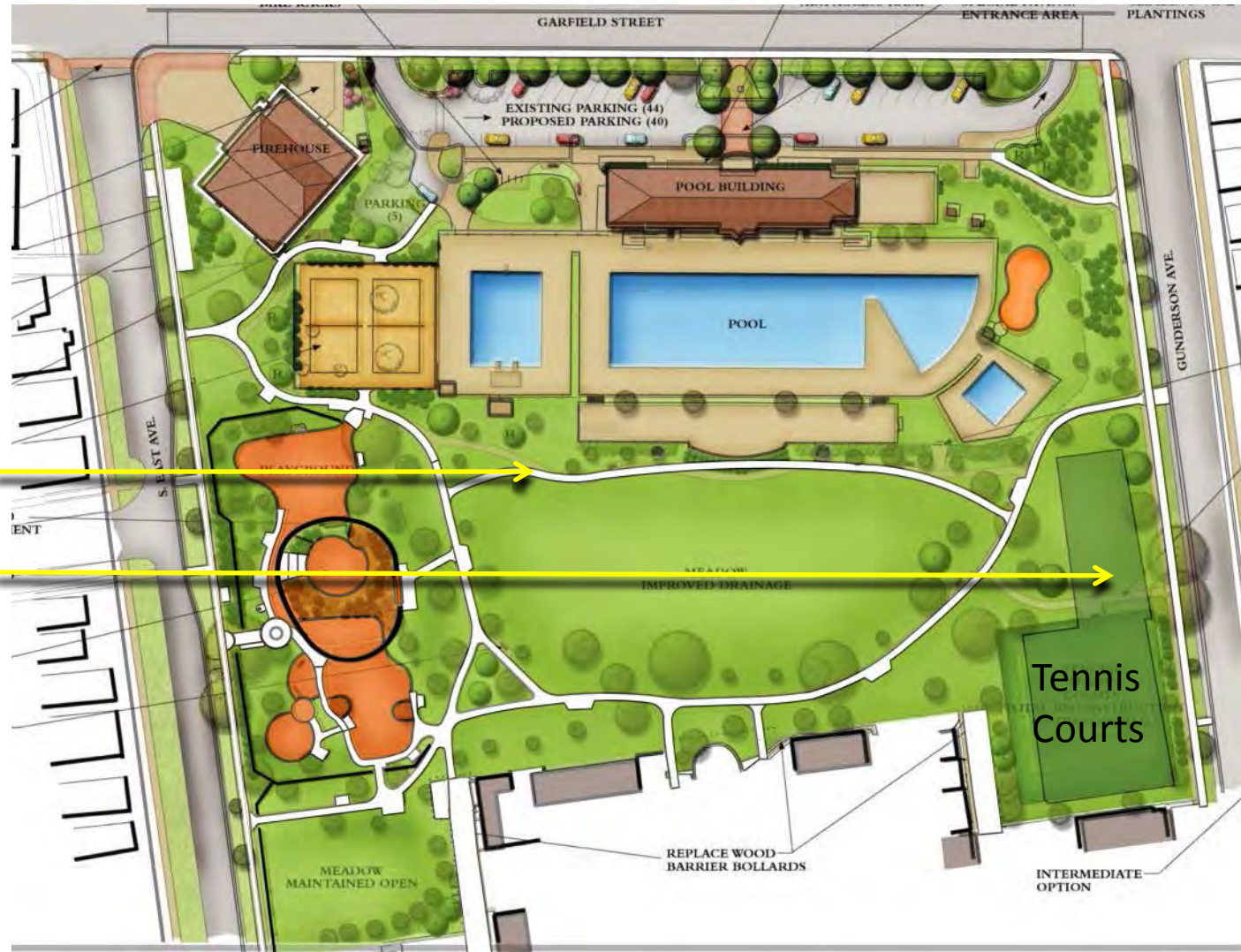
Removed Ash
trees repurposed
for AGEEC.

New Trees
planted more
after this review
of master plan





Rehm Park Improvements Since 2008 continued



Some sod added
Turf now aerated
and over seeded

New Path

Ga Ga Pit added
to Tennis Court
also
striped for 4
square/hop
scotch



Other Recommendations from Master Plan

- Remove north most tennis court, add entry path and create a green space and entry on East Side
- Improve the playground surface
(PDOP is considering replacing equipment, this gives us a great opportunity)
- Additional Paths
- Additional Planting

Park Entries: Is the Park Welcoming?





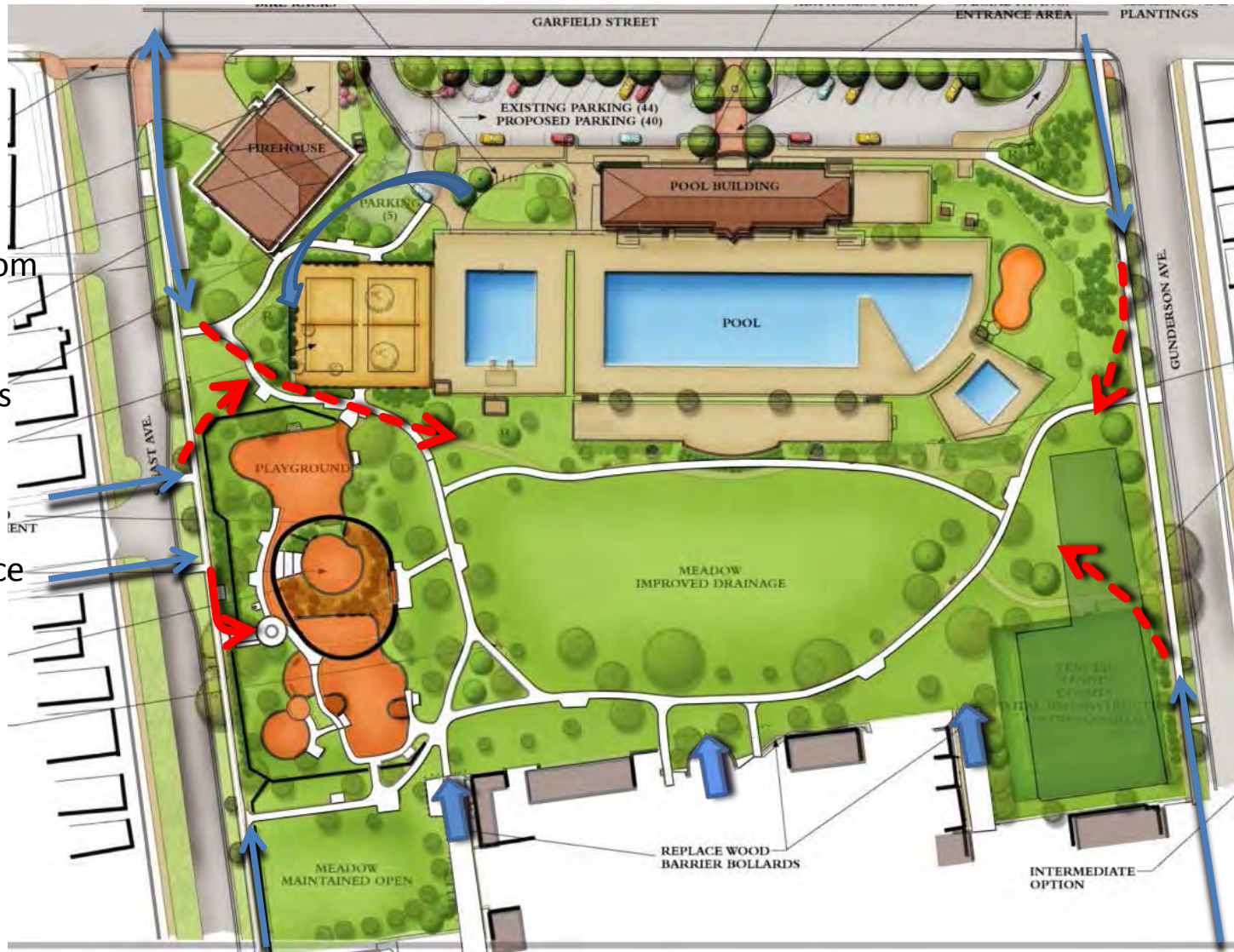
Park Entryways don't relate to Approaches

No real entry from North

Multiple Barriers to Park Entry

Playground Fence is a barrier

Paths wind through Playground





Park Approach and Entries: North West Side

Sidewalk leads to
entry drive to fire station

No direct paths into Park

Desire Lines through grass





Park Approach and Entries: West Side



Approach leads to a Fence, Confusing and not Very Welcoming



Park Approach and Entries: West Side



Actual Entryway is a Desire Line around Fence to the North



Entries: West Side



Park Entryway to the South leads to Playground and Multiple Paths, Very Confusing



Paths lead around Playground & to Multiple Paths





Entries: South West Side



Entry is further North



Alley Entryway SW



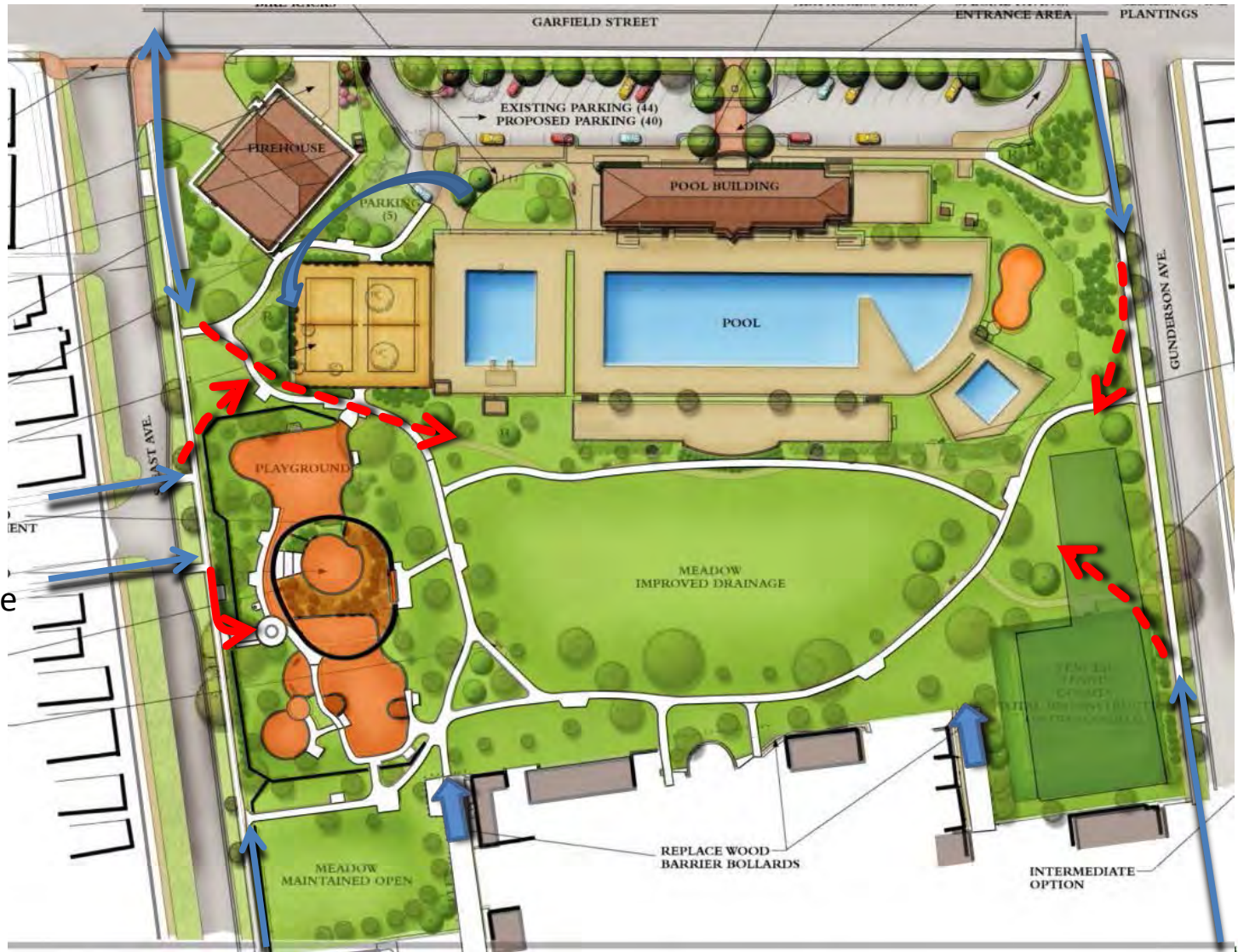
Bollards replaced with Stone curb stones but needs entryway and more defined alley edge

West Side



Besides the Volley Ball this side is focused on Kids

West Side



If the PDOP is considering refitting the play equipment could we reconsider the entries?



Welcome Residents into the Park

Design of entries into Scoville

We will not have a lot of seating but hopefully you get the idea





West Side

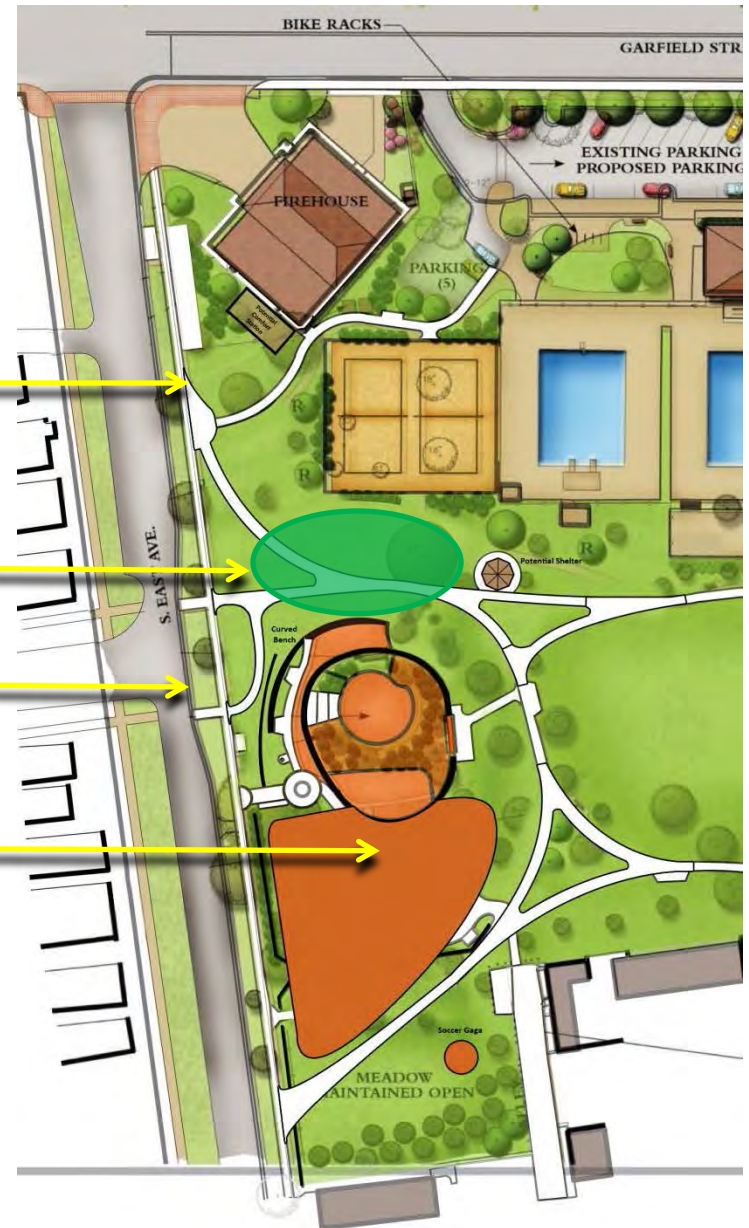
Create entryways and paths that welcome people and line up with approaches

Create a new welcoming meadow

Make sense of the path system

Keep the Train and expand the playground to the south

Please note: This is Preliminary / Conceptual





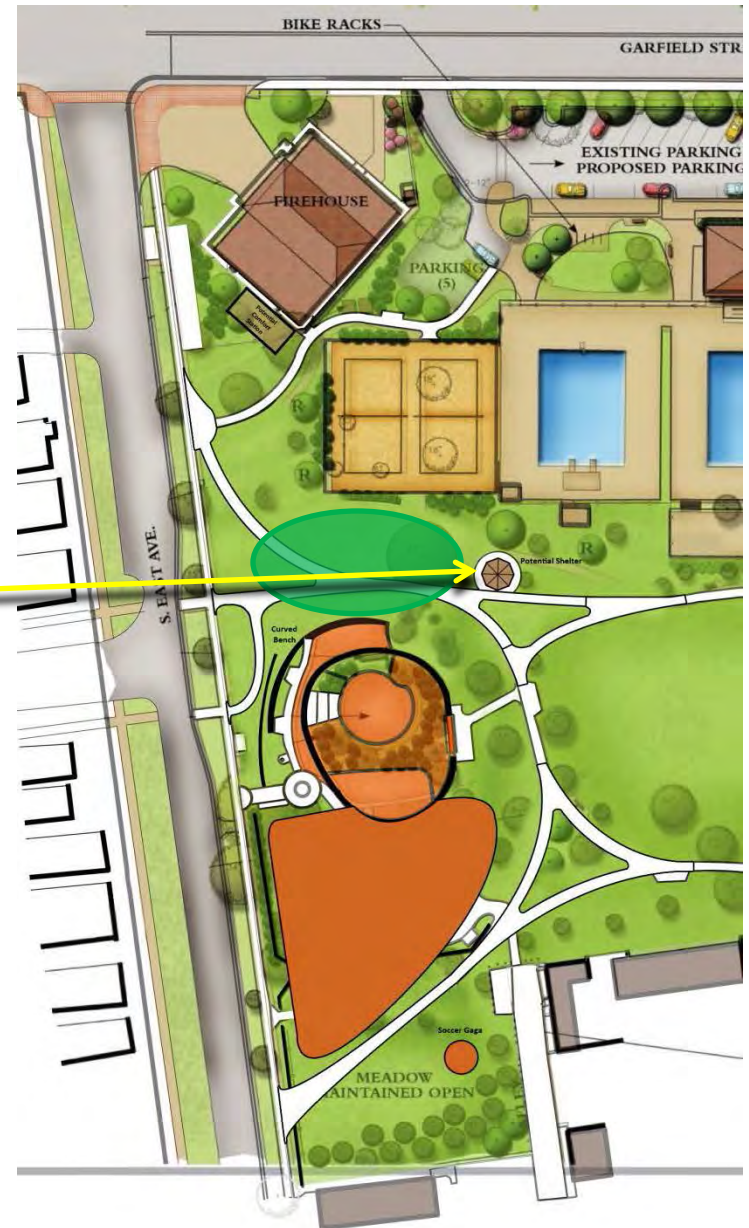
Could have New Play Equipment for various age groups
We would keep as much shade as possible





West Side

Add shelter where all events can be viewed
Exact location can be determined later





West Side

Add shelter where all events can be viewed





West Side

Instead of a “Transportable Restroom”
Add public restroom to the Fire Station
Fire Station occupied 24/7 and therefore
excellent supervision

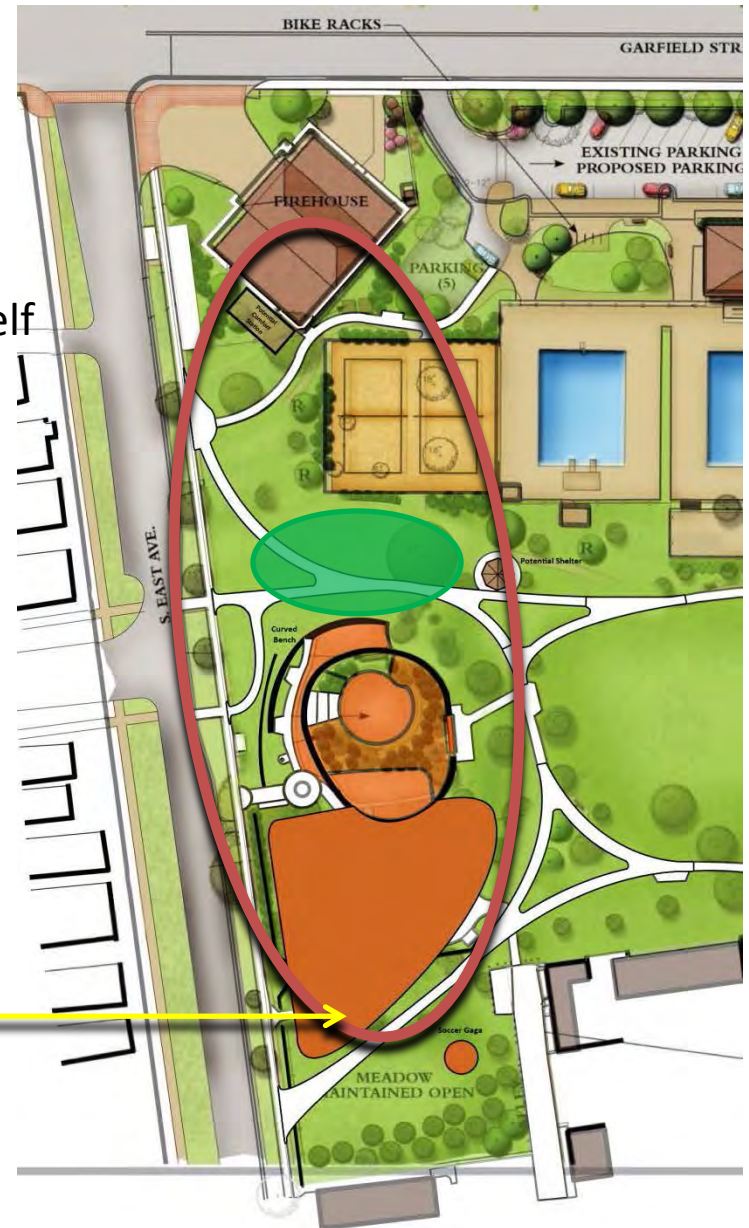




West Side

This side of the Park now acts as a park in itself

Suggestions for the Playground and the South West Corner





Suggestions for South West Corner

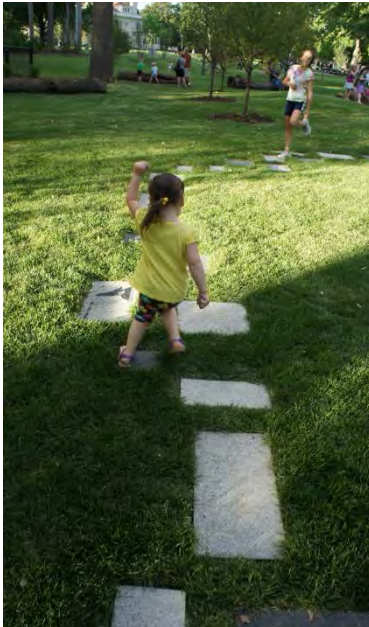
- Make sense of the entryway
- Discovery Area
- New location for Ga Ga
- Other?

Whatever happens, increase the planting buffer to residences



And a Discovery Area with a “Nature” Theme?
National Recreation and Park Association calls for the following for young people:

- Spontaneous outdoor play
- Connecting young people to the outdoors and nature
- “And to the community”



Mills Park



And /or a Rustic Play/Discovery Zone Adding to the new Garden at the Conservatory





Adding to the new Garden at the Conservatory That is a huge success



Add relocate the Ga Ga from the East Side





West Side

New Restrooms

Entries and Paths to make more sense

New entry meadow

Shelter

New entryways

Rehabbed Playground

Discovery Zone

Meadow and Ga Ga pit

Additional Planter Buffer for Residences





Do We formalize S. Scoville Entry?



Fence and Entry Posts?

Distinct Areas of the Park form a Chain of Spaces



East Side Entry



Fences and Tennis Courts restrict Entry

Master Plan recommends removing the Northern Tennis Court

Rehm Park Master Plan Update - Park District of Oak Park



East Side Entry?



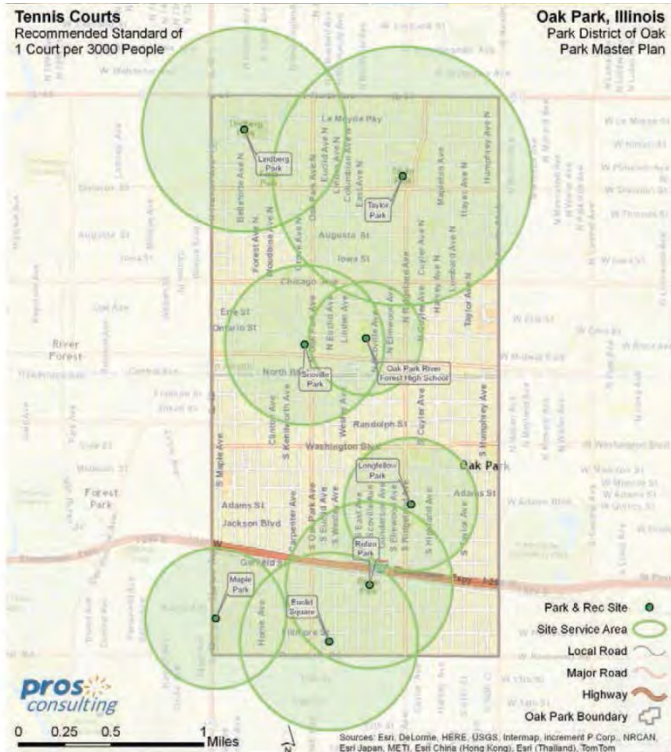


East Side Entry? Where is the Entry?

The Master Plan called for the Removal of this Tennis Court



Nearby Parks with Tennis Courts



Tennis Courts

The community has a much higher service level for tennis than recommended, so no new courts are needed within the District. Courts can be removed or repositioned if it creates a benefit to the overall park.

The focus should be on un-lit courts as they have more limited hours of use. Additionally, the equity map can provide geographic guidance to where in the community a reduction of courts can occur that would create fewer impacts on users. Potential repositioning to other uses such as basketball, pickle ball or a multi-use court should be evaluated as well.

Figure 3.37 - Tennis Courts Equity Map



Nearby Parks with Tennis Courts



Rehm Park - Park District of Oak Park



Courts East Side used for Ga Ga & kids learning to cycle



Master Plan calls for the removal of the Northern Tennis Court and Creating a proper Entryway

Recommendations since 2008 include

Active Adults: Fastest growing segment of communities nationwide

Add walking loops with distance markers.” And what about something more?



“Thoughtful Neighborhood and Park design encourages active aging.”

Let's Challenge All Ages to Be More Active

Younger Children



Older Children



Adults



“This is the first generation
that might not outlive
the previous generation.”

Dr. Linda Carney, MD

This is a multigenerational problem

We need a multigenerational solution.



Observed Outcomes

- Enjoyed by all ages
- Encourages healthy, fun competition, singly or in groups
- Promotes a well rounded workout through functional fitness
- Promote friendship & social engagement
- Promotes behavioral change through repeat usage
- Holds interest over time
- **Makes Exercise FUN!**



TAKE AMERICAN NINJA CONEPT OUTSIDE







START





Can Time Circuits and Sprints



Mobile App

- Challenge your friends to get fit
- Compete against yourself, your community, other cities or schools
- Share photos of yourself at the course
- View training tips
- Branding and retail opportunities



Community Benefits

- Create a multi-generational activity destination
- Enhance health and wellness of people of all ages and fitness levels
- Make fitness fun
- Reach diverse demographics across age and gender



2 Schemes for East Side Scheme A

Remember these
are preliminary
and conceptual



Shelter

Challenge Course

New entry path

Expanded Buffer to residences





PARK DISTRICT
of OAK PARK

Shelter would have views into meadow
and the Challenge Course





PARK DISTRICT
of OAK PARK

East Side Scheme A: Challenge Course blocks view to Fields





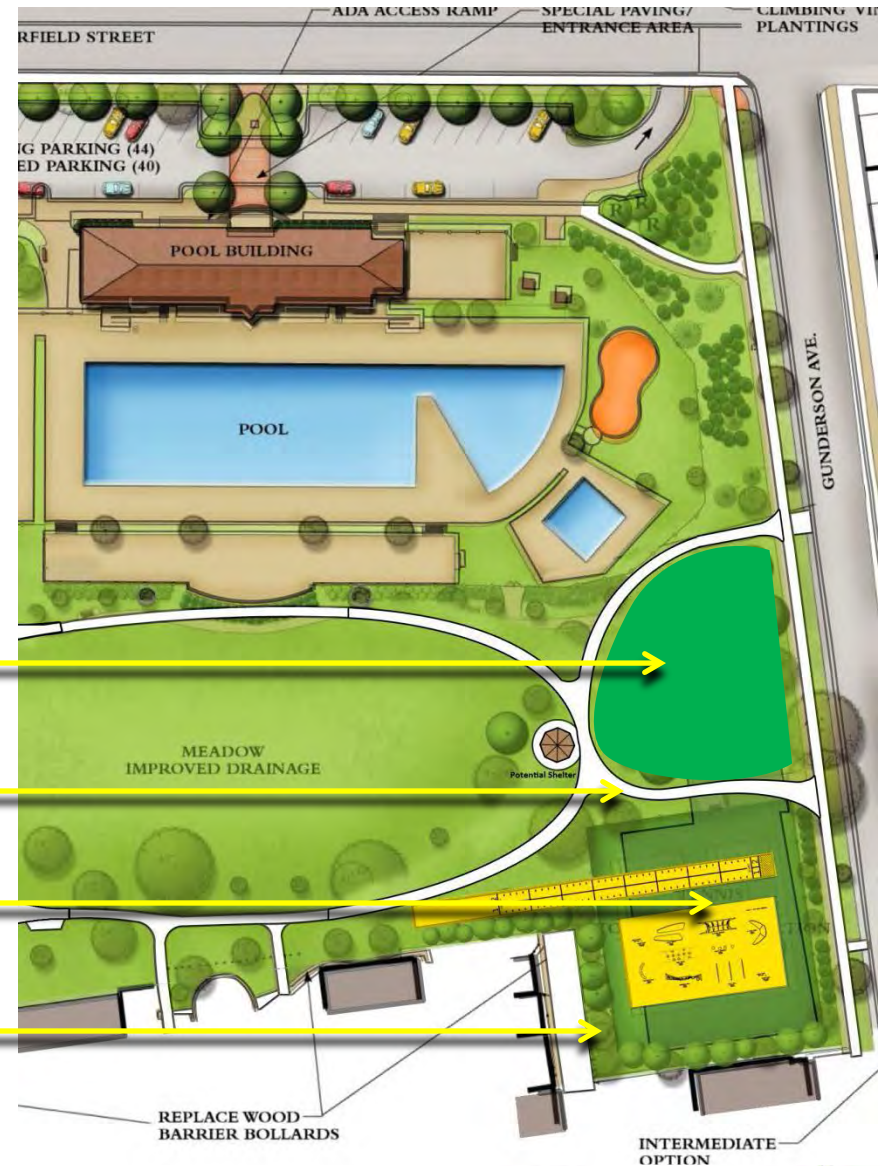
East Side Scheme B

New Entry Meadow

New entry path

Challenge Course

Expanded Buffer to residences



East Side Scheme B View into Fields would not be Blocked



View into Fields would not be blocked





East Side Scheme A & B





Rehm Park Master Plan Revisions & Updating: Agenda

Ideas may strike you later you can email Diane at
Diane.Stanke@pdop.org

and go to
<http://www.pdop.org/about/park-planning-projects>
for this presentation it will be uploaded in the next few days