

Randolph Park Master Plan Update



Presentation Wednesday April 04, 2018



Randolph Park Master Plan Update - Park District of Oak Park

Altamanu Inc.
landscape architecture + urban design + planning

Tonight

- Site Transfer
- Cost of Renovations and Repairs from 2009 - 2010
- Brief Review of Park District's Planning Process
- Brief Review of Master Plan 2009
- A Comparison : The Park before and after Renovations
- Some Suggestions for new Elements
- Your opinions and Ideas



Randolph Park – Site History

- R. R. / Tramline abandoned in 1902
- Site Acquired by Village of Oak Park in 1924
- Equipment installed 1991 for \$200,000
- West Side Conveyed to Park District in 2006
- East Side transferred in 2009
- Master Plan 2009
- Park Renovation completed 2010

Construction Cost \$320,000



Randolph Park Master Plan Update - Park District of Oak Park

Altamanu Inc.
landscape architecture + urban design + planning

The Randolph Park Site Master Plan – Process in 2009



The Randolph Park Site Master Plan – Process in 2009

Focus Groups

Wednesday July 29th

Community Meeting #1

Wednesday August 5th

Community Meeting #2

Wednesday August 26th

Community Meeting #3

Wednesday September 16th

3 Questionnaires plus Emails and Mail



Randolph Park Master Plan Update - Park District of Oak Park



Master Plan 2009 “A Park Divided” by the Alley



How should it function? How to Cross the Alley? (from 2009)



In the End “Don’t Encourage the Kids to Cross”



Comments Questionnaire & Community Meeting 2009

Yes, the alley should be closed and the green spaces connected 67.9%

No, the alley should NOT be closed and the green spaces connected 32.1%

- Delivery/utility trucks etc. block alley sometimes.
- Oak Park does not allow them to use Oak Park Ave.
- Can we barricade the alley for a week and see the result?
- I like the Speed Bumps and Speed Table (A FEW COMMENTS)
- Step back the fences and use speed table to give better line of sight.
- Add flashing yellow lights and setback the gate so there's better line of sight
- Add a gate & give residents on the block get a key in addition to garbage men, etc.
- That is a lot of keys
- The gate could have a keypad or combo lock.
- The whole crossing could be a theme
- There's a popular playground modeled after a street and crossing
- The alley could look like a private driveway and discourage other through traffic.



The Park in 2017 : Resulted in 2 Completely Different Uses



Randolph Park Master Plan Update - Park District of Oak Park

Altamanu Inc.
landscape architecture + urban design + planning

Suggested Themes 2009

Nature : Illinois nature, eco-sensitive, health sensitive, natural themes

No Theme : Just lots of Activities

Train Theme

Railroad crossing : getting across alley to other side of park.
(Eliminated Safety Issues)

Safety Town theme – with stores, etc. having real Oak Park business names
perhaps businesses could sponsor a small building or sign.

all agreed **We love the Frog!!!!**

Other Comments 2009

World cultures

Peace, love, intercultural kindness

Picnic tables, More seating, Shade

I don't suppose you could put bathroom facilities there? Correct!

Please avoid any commercial or cartoon themes

Handicap accessible so all kids can enjoy. Absolutely

Art wall?

Separate sand box? Majority thought too many problems with existing

More colors.

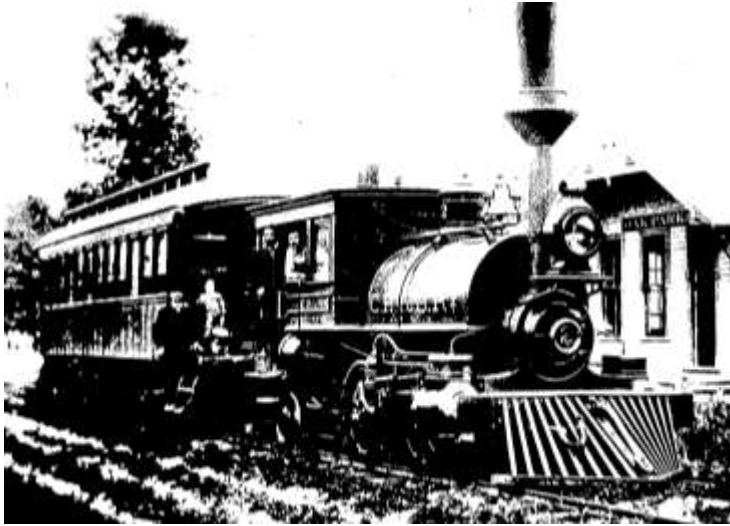
Wasp/Bee infestation of sand

Why couldn't Mike get rid of them?

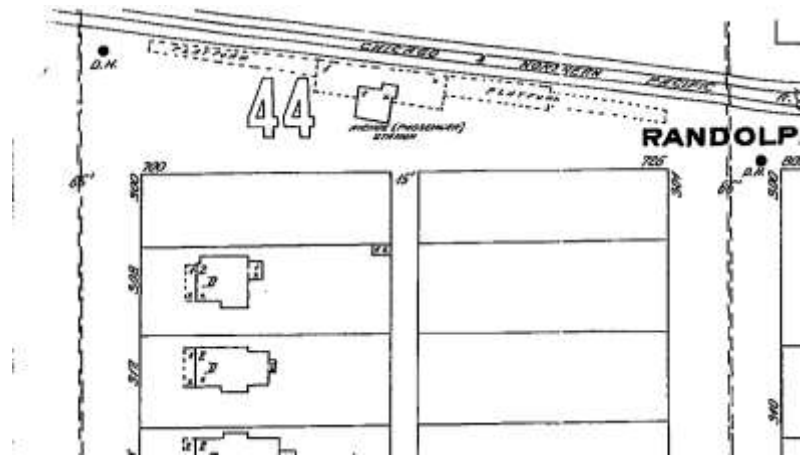


The sand will go, to be replaced by a mixture of surfaces

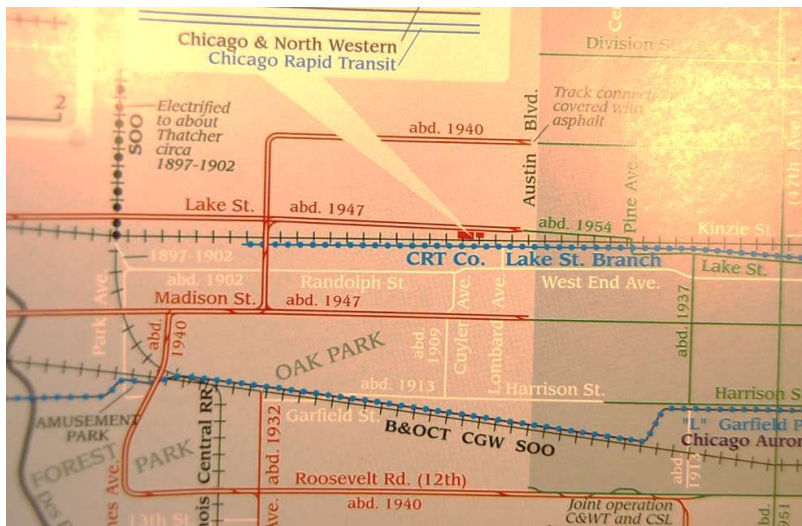
History of the Site was Important : Train Theme was Selected



Randolph Line east of Wisconsin/Home Ave.
Photo circa 1885.



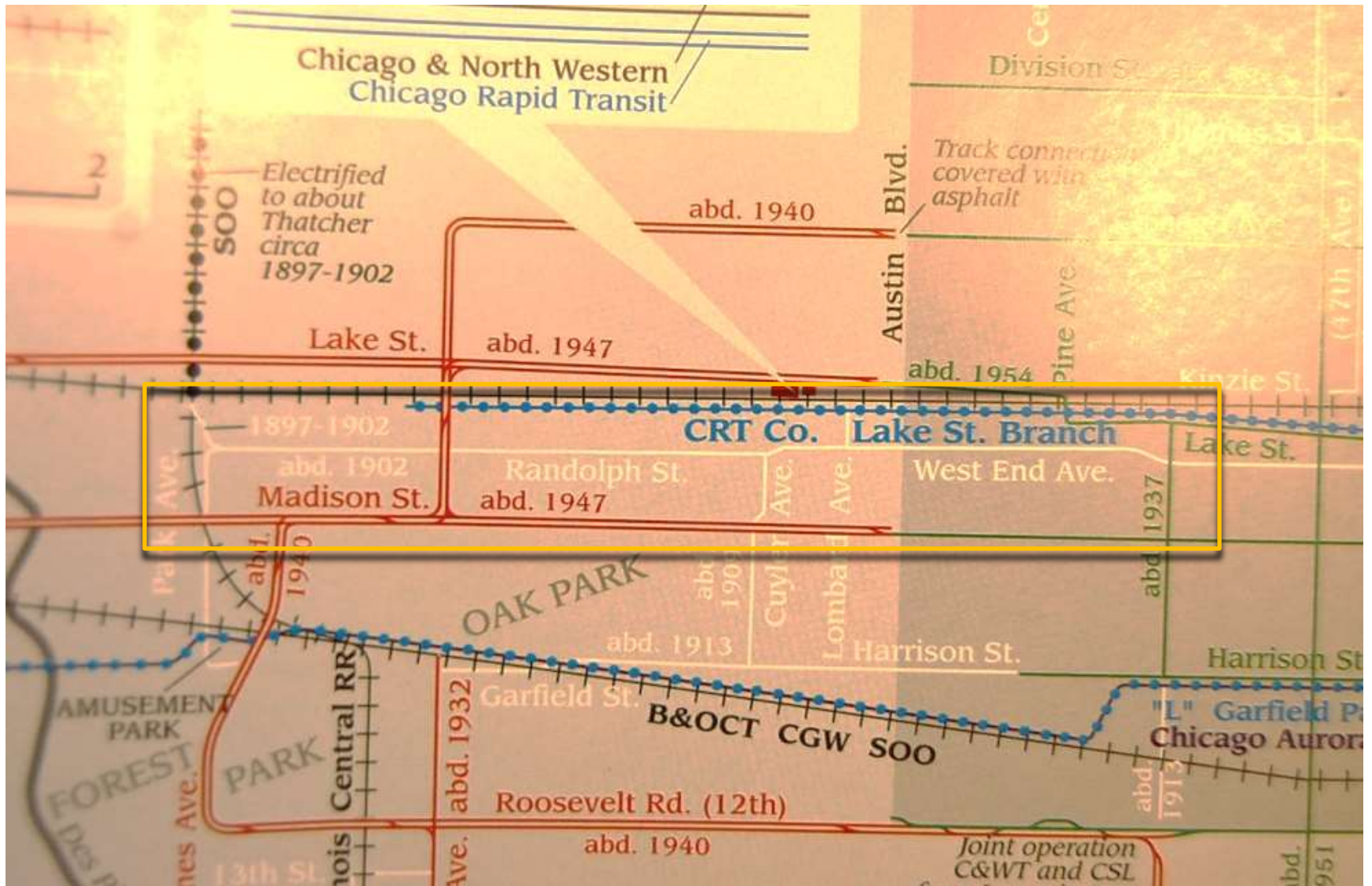
1895 Sanborn map showing a station on the site



Railway map showing Randolph St. Line – it was abandoned in 1902.

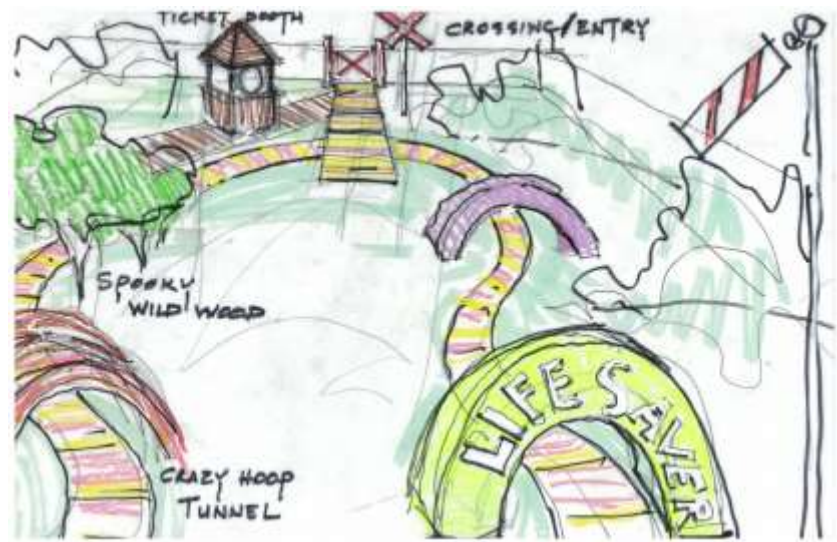
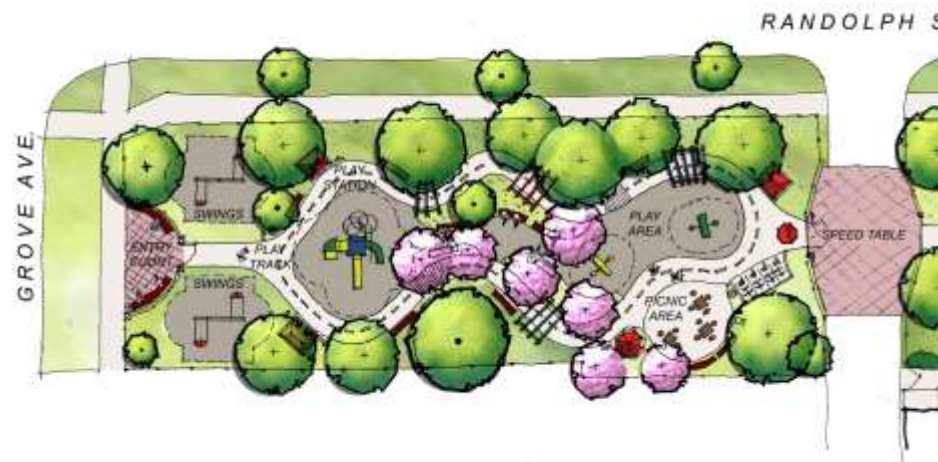


History of the Site was Important : Train Theme was Selected

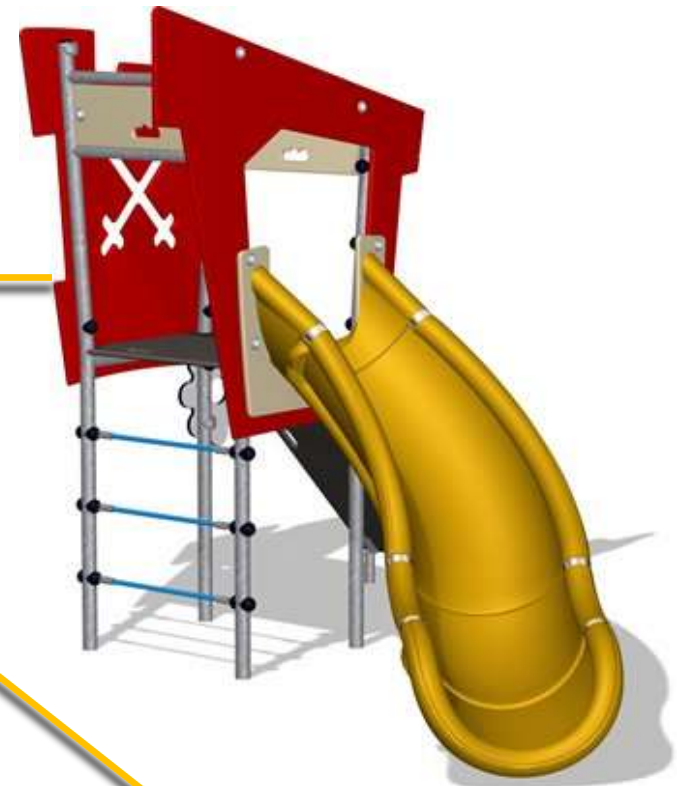
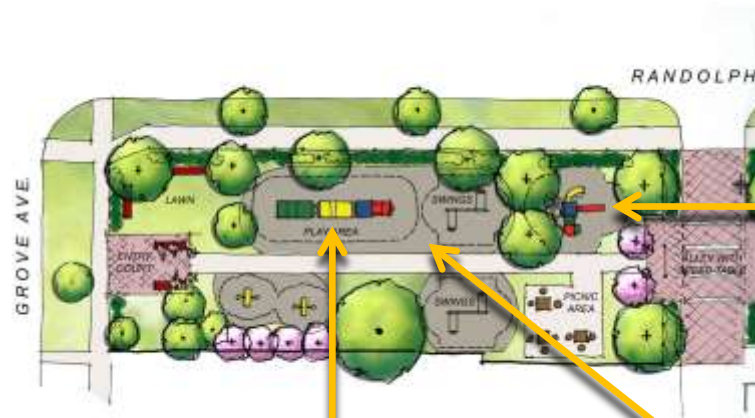


Railway map showing Randolph St. Line – it was abandoned in 1902.

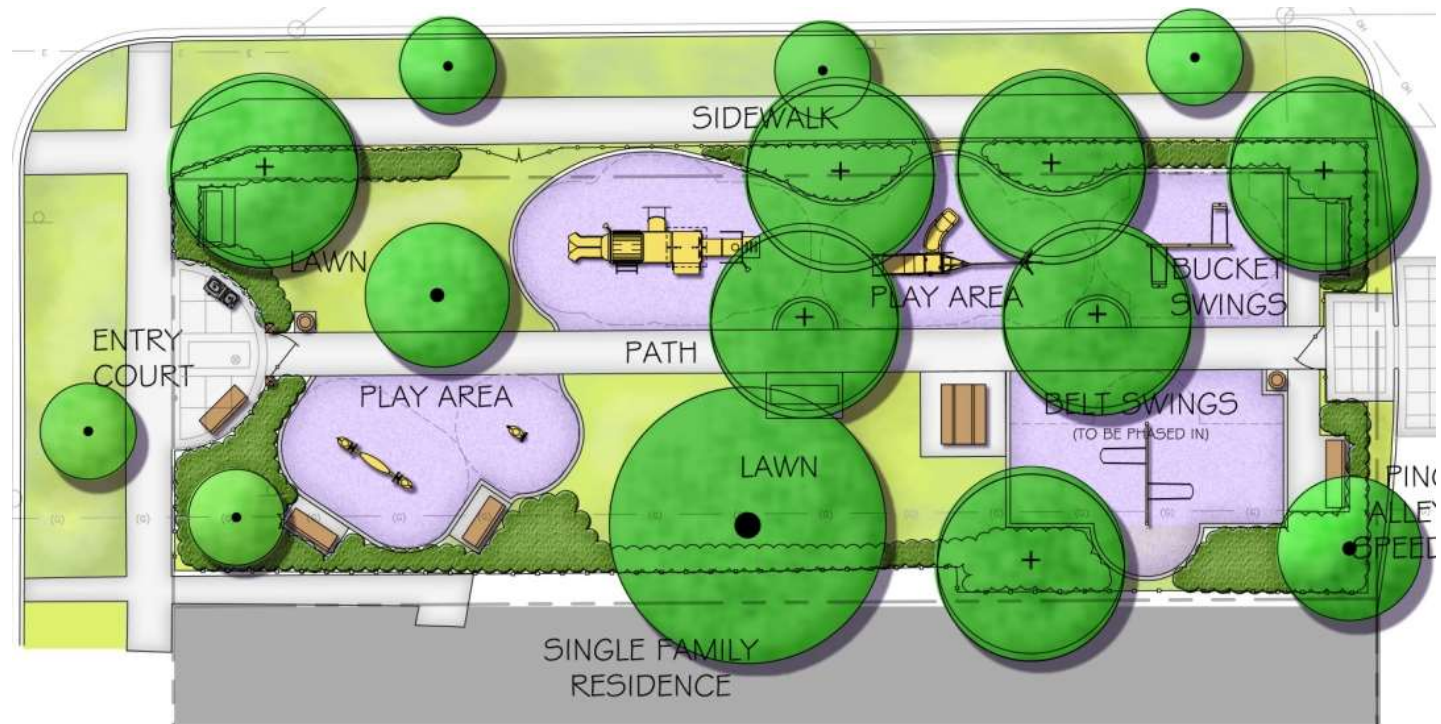
Concept 2009: What Should it Look Like? Literal Track/Station?



Consensus was Train Themed Equipment



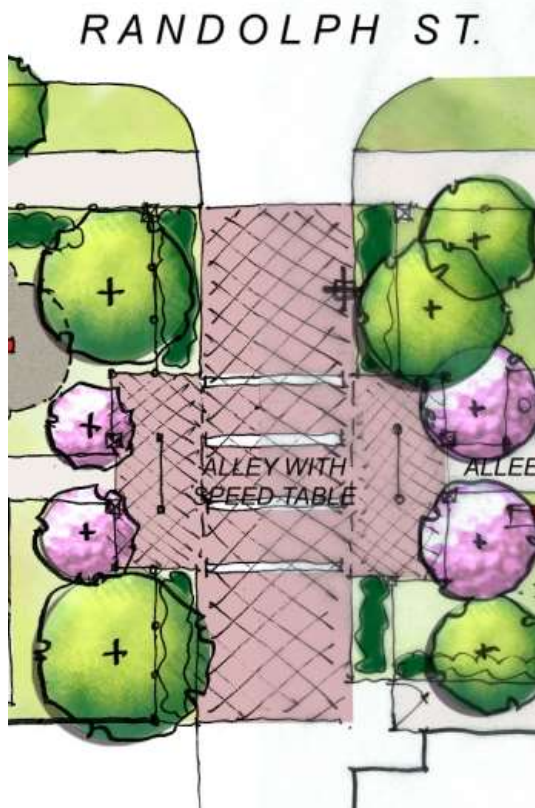
Many Iterations but Consensus on this Final Plan for Tot Lot



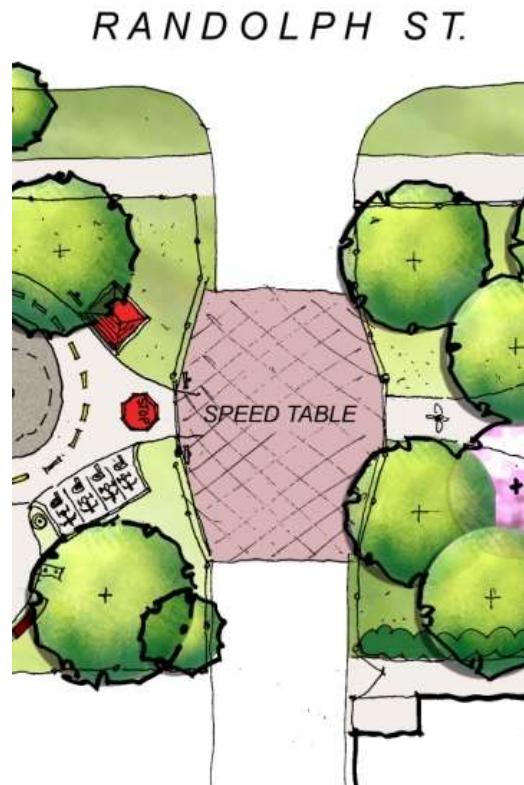
Ornamental fence 3 sides, wooden fence on residential side, New entry court w/seating, Drinking Fountain, Soft Surface, Teeter Totters & benches, Roll Hill/Mound retained & Lawn area kept open, Smaller train different than at Stevenson, Jungle Gym, Bucket & Belt Swings, Seating at fence, Planting along new fence, New trees (marked with cross)

The Crossing of the Alley : Concern with Safety 2009

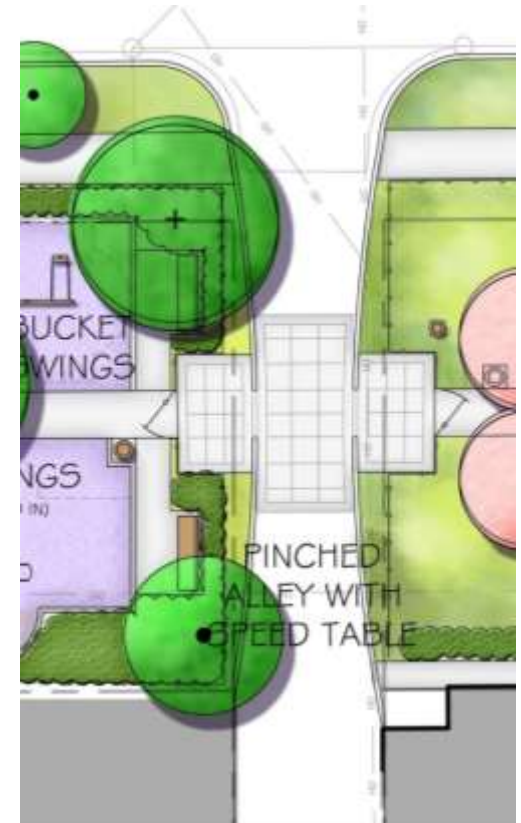
Proposal 1



Proposals 2



Proposals 3



The Crossing from 2009

Fences set back –provide open sight lines to see kids and prevent fences from being hit by plows and trucks

Court on each side so kids can be seen

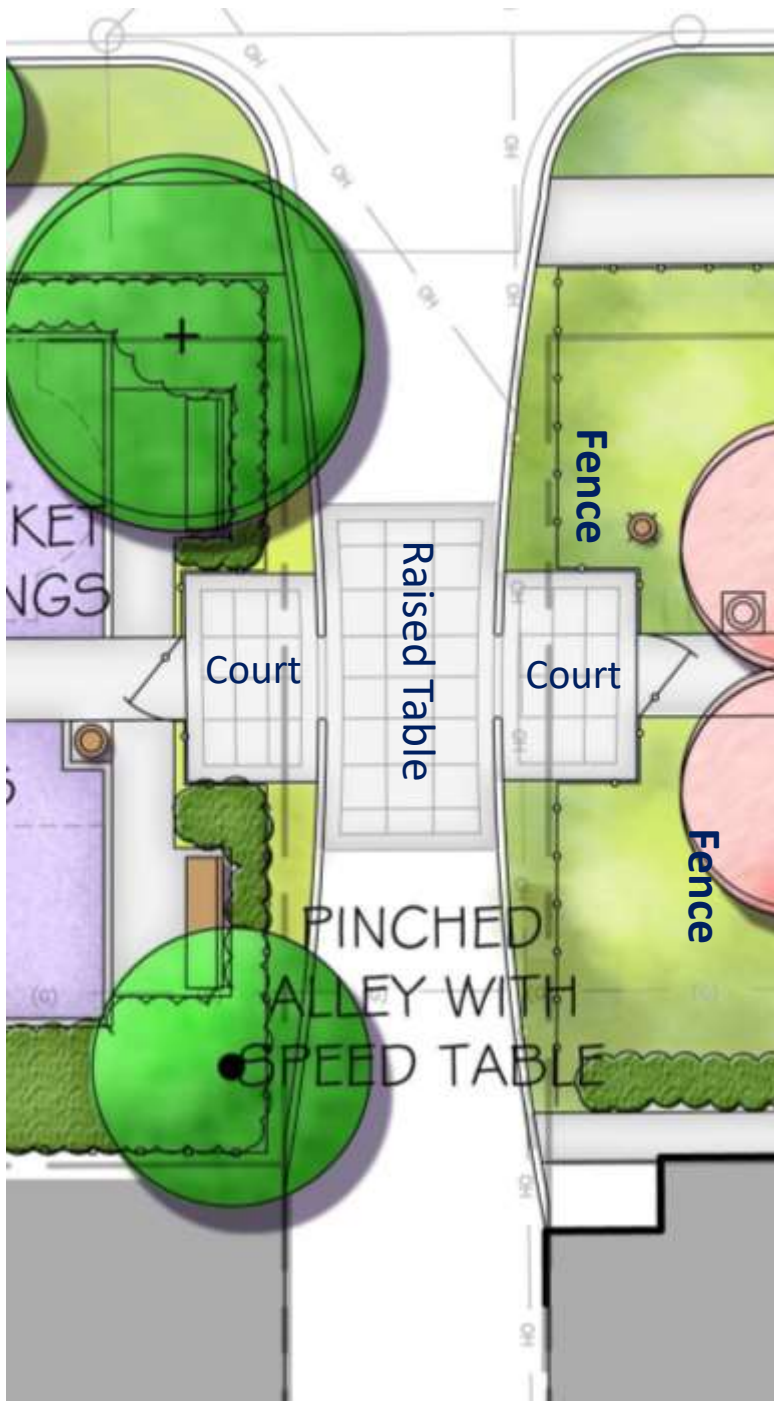
Low curb along sides of raised table

Narrowing of table will slow cars

Narrowing of table will prevent parking

Narrowing will prevent stopping

Smaller area of raised table will be less expensive

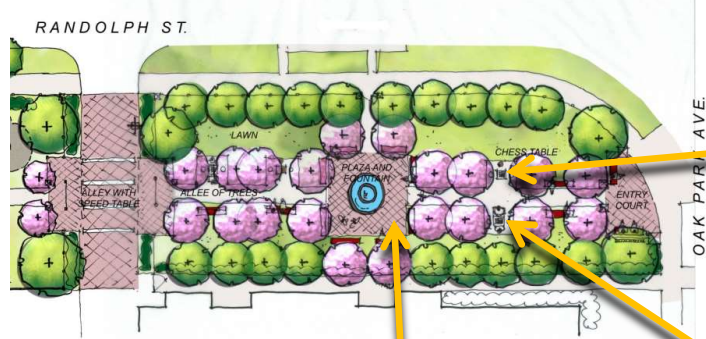


Passive Area East Side 2009



(Fountain and Brick Speed Table proved too expensive)

Passive Area East Side – Character Images 2009



Example of outdoor chess table

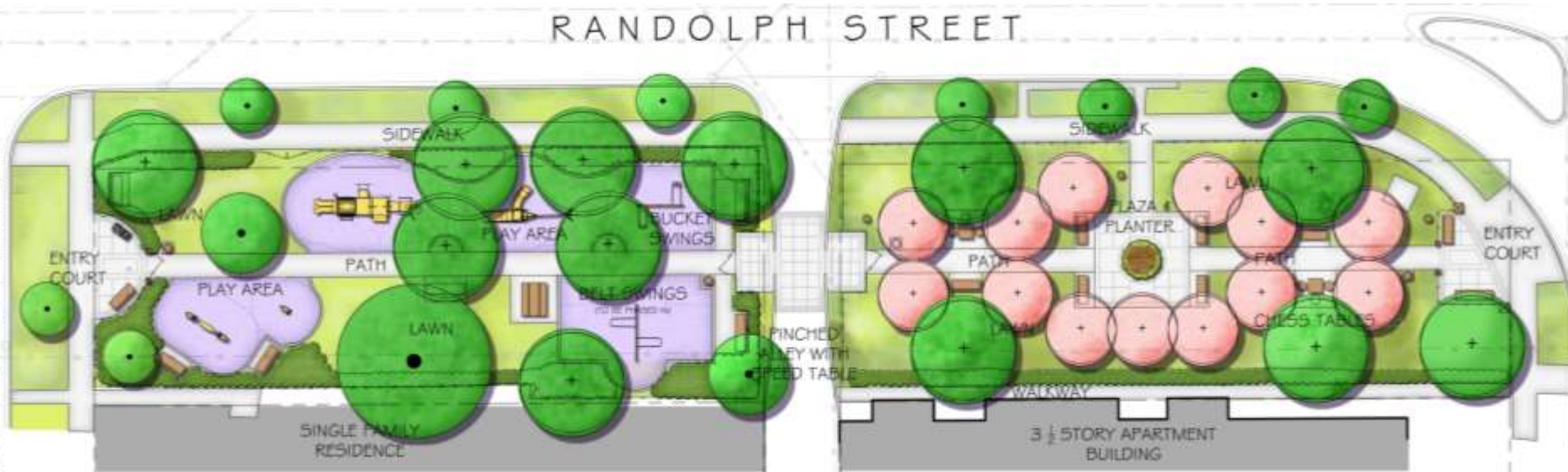


Allée of trees at the Art Institute courtyard.



Allée of trees around small tables at Bryant Park in New York City

Final Plan

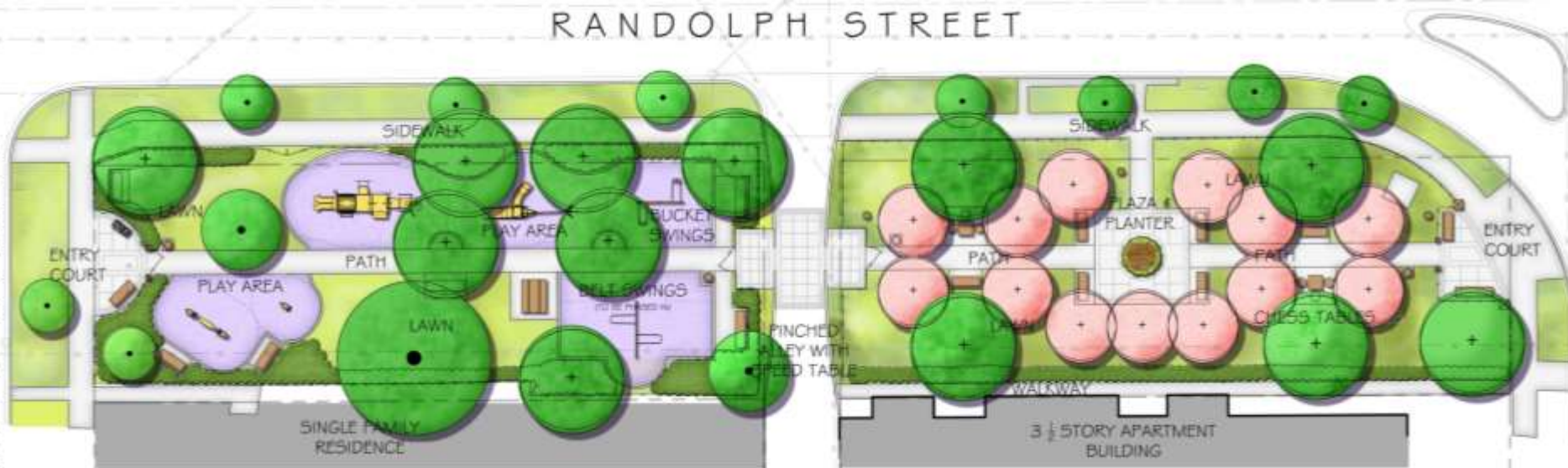


Reception/Entry Spaces, Linear, formal east-west axis

- Addresses alley with speed table; fences would slow pedestrian traffic
- Elements include a small fountain and plaza, an allee of trees, chess tables, a separate picnic area

(Fountain and Brick Speed Table proved too expensive)

Different Design Approaches



How the Park Looked in 2009



Randolph Park Master Plan Update - Park District of Oak Park

Altamanu Inc.
landscape architecture + urban design + planning

How the Park Looked in 2017



West Entry 2009 & 2017



Randolph Park Master Plan Update - Park District of Oak Park

Altamanu Inc.
landscape architecture + urban design + planning

How the Park Looked in 2009



Randolph Park Master Plan Update - Park District of Oak Park

Altamanu Inc.
landscape architecture + urban design + planning

The Mound is Almost Too Popular : Erosion from Use



Nice and Green at Opening but soon eroded



Randolph Park Master Plan Update - Park District of Oak Park

Altamanu Inc.
landscape architecture + urban design + planning

From 2009



Playground



Playground



2009 & Opening 2010



Randolph Park Master Plan Update - Park District of Oak Park

Altamanu Inc.
landscape architecture + urban design + planning

How the Park Looked in 2010



Randolph Park Master Plan Update - Park District of Oak Park

Altamanu Inc.
landscape architecture + urban design + planning

How the Park Looked in 2010



How the Park Looked in 2010



Randolph Park Master Plan Update - Park District of Oak Park

Altamanu Inc.
landscape architecture + urban design + planning

The Frog Was Saved



Randolph Park Master Plan Update - Park District of Oak Park

Altamanu Inc.
landscape architecture + urban design + planning

Alley and Power Pole in 2009



Alley and Power Pole in 2009



Randolph Park Master Plan Update - Park District of Oak Park

Altamanu Inc.
landscape architecture + urban design + planning

East Park Space 2009 Looking Towards Oak Park Ave.



Randolph Park Master Plan Update - Park District of Oak Park

Altamanu Inc.
landscape architecture + urban design + planning

How the Park Looked in 2009 Looking Towards Oak Park Ave



Randolph Park Master Plan Update - Park District of Oak Park

Altamanu Inc.
landscape architecture + urban design + planning



East Park Space 2009 Looking Towards the Alley



Randolph Park Master Plan Update - Park District of Oak Park

Altamanu Inc.
landscape architecture + urban design + planning

How the Park Looked in 2009 Looking Towards the Alley



Randolph Park Master Plan Update - Park District of Oak Park

Altamanu Inc.
landscape architecture + urban design + planning



The Park in 2017 & 2009



Randolph Park Master Plan Update - Park District of Oak Park

Altamanu Inc.
landscape architecture + urban design + planning

Discussion and Your Comments



Randolph Park Master Plan Update - Park District of Oak Park

Altamanu Inc.
landscape architecture + urban design + planning