



Euclid Square Park Master Plan Update

Presentation November 15th, 2017





Tonight:

- A look at the Master Plan from 2009
- What has been added or changed since 2009

Phase 1 Construction Completed April 2011

\$310,000

Phase 2 Construction Completed September 2017

\$1,090,000

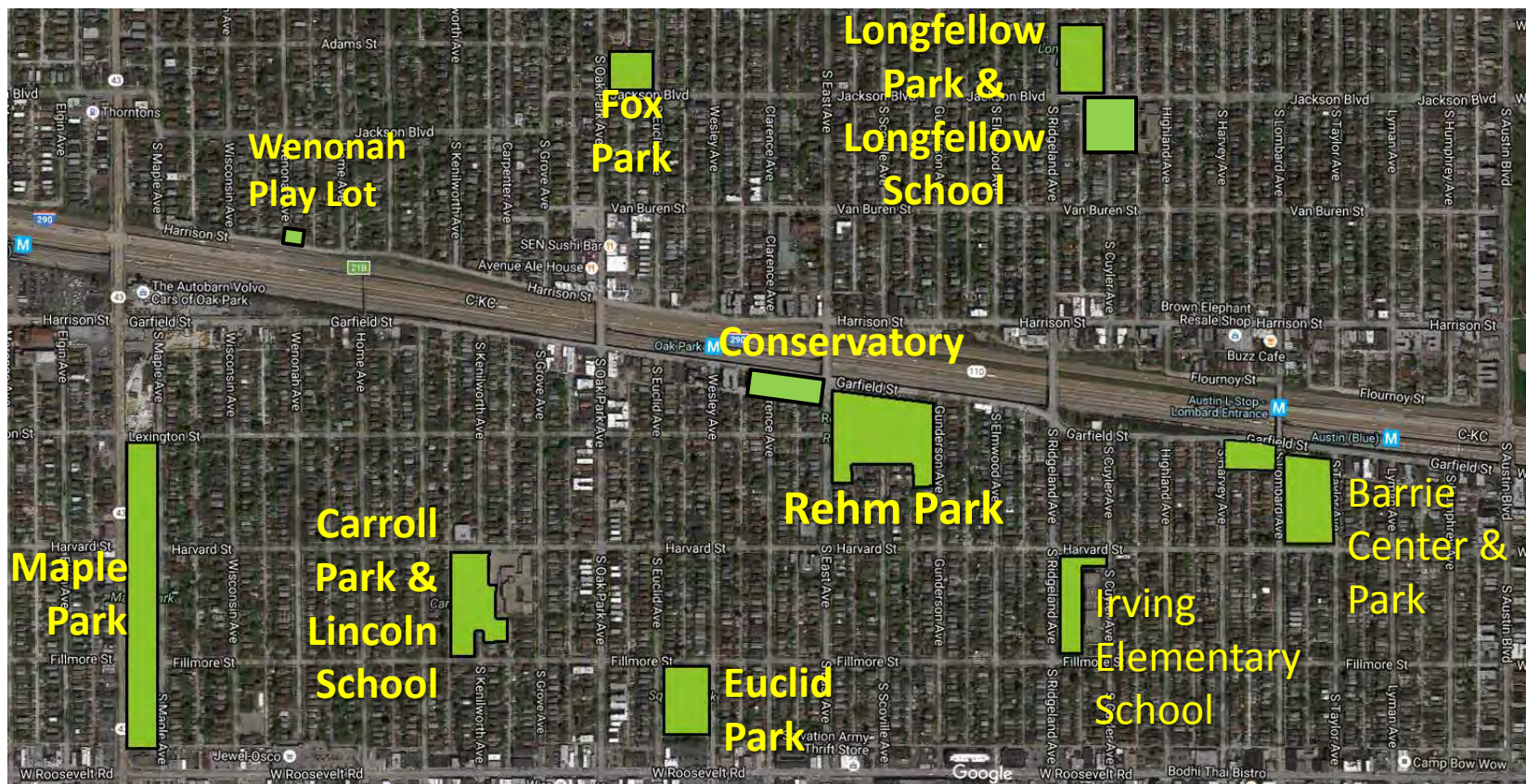
Plus incidental expenses

- A Comparison: The Park in 2009 and Today
- Discussion



PARK DISTRICT
of OAK PARK

Area Context: Parks & Schools





Euclid Square Park Process 2009

Focus Groups to educate the design team

Community Meeting #1 Tuesday April 14TH

Community Meeting #2 Tuesday May 12th

Community Meeting #3 Tuesday June 2nd

Presentations to the C.O.W. and the Board

Questionnaire, Emails and Mail

Website : <http://www.oakparkparks.com/>

Contact: Diane Stanke Email dianes@oakparkparks.com



Euclid Square Park Process 2009

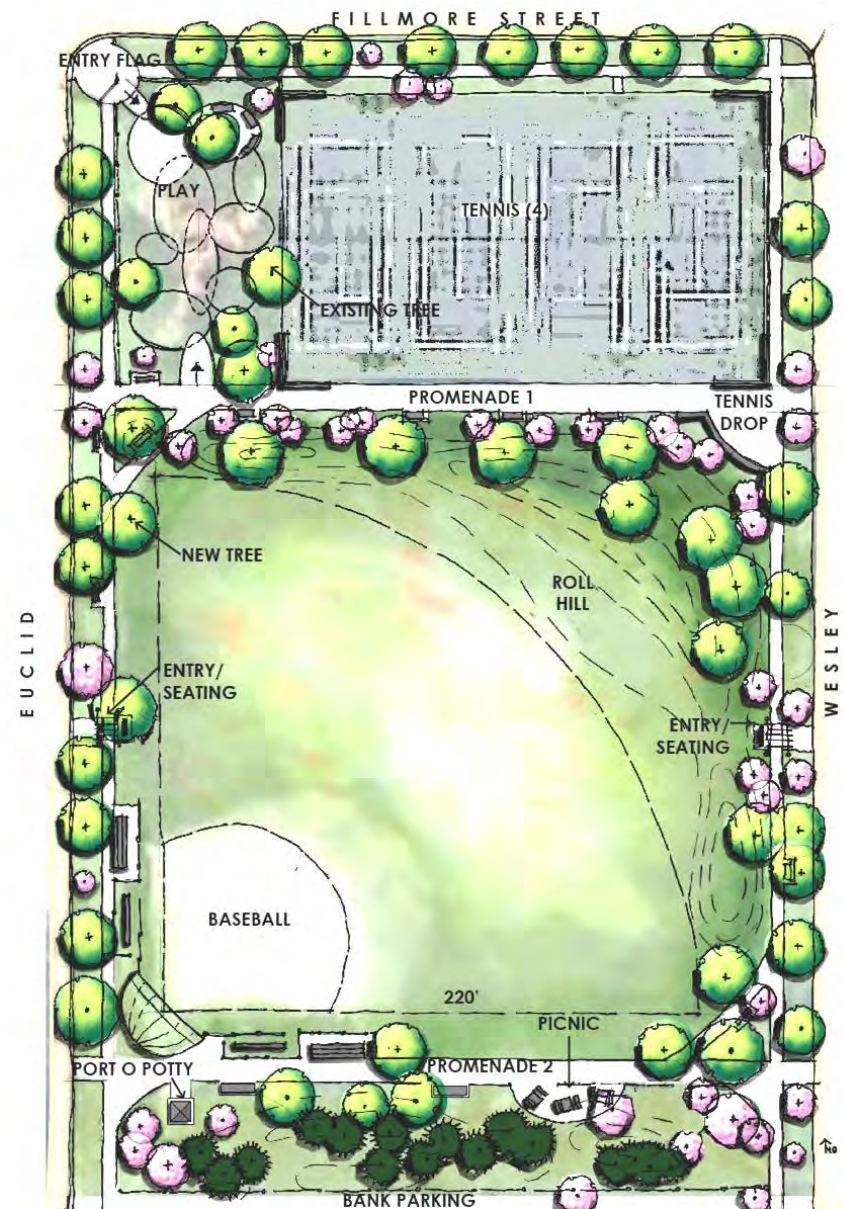


Community Meetings

We looked at many Conceptual Designs in 2009



Scheme 1

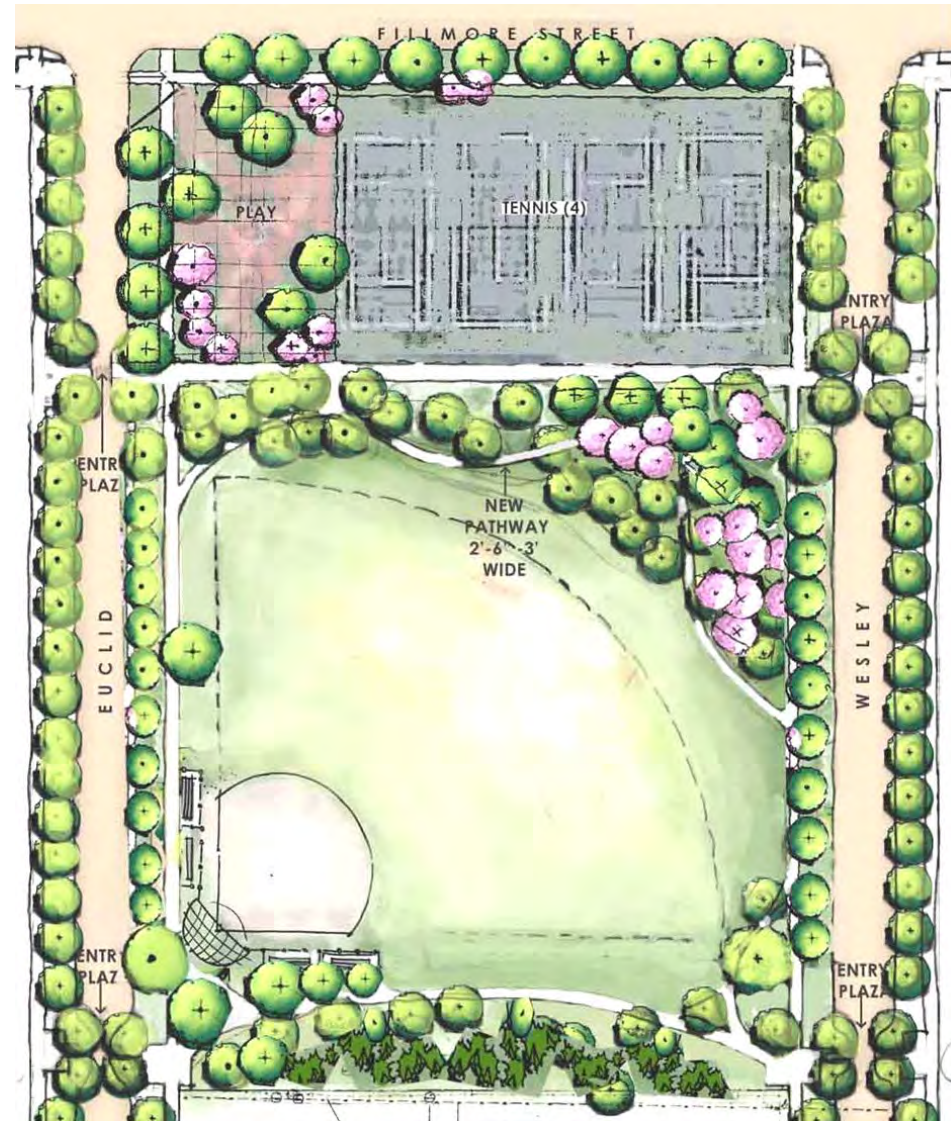


Scheme 2

Conceptual Designs



Scheme 3



Scheme 4

Consensus Plan 2009

- Flag Court and Entry with seating
- Playground rebuilt and enlarged, tree preserved and more added
- Seating added in Playground and on Promenade
- Mounds expanded
- Trees added
- New seating/viewing areas
- Small hardscape area behind backstop with seating, drinking fountain, bike racks etc.
- Port-a-potty and storage shed added and buffered with planting
- Lighting kept at present day levels
- ALL CARRIED OUT**



- Bump outs may be installed , dimensions to be determined after discussions with the Village (**bump outs not constructed**)
- When reconstructed tennis courts moved slightly west to allow entry and path
- Small plaza, rain garden and Promenade
- Paths still curve behind mounds
- Mounds enlarged with roll hill and expanded to west and south
- Field regraded and enlarged
- Trees replanted and understory of flowering trees added (**In progress**)
- Southern Mound replanted with a mixture of evergreens and shade trees
- Viewing area added
- ALL EXCEPT BUMP OUTS CARRIED OUT**



Site Tour Comparison



PARK DISTRICT
of OAK PARK

NE Entry 2009



Euclid Square Master Plan Update - Park District of Oak Park

Altamanu Inc.
landscape architecture + urban design + planning



NE Entry 2017



Pleasant Entry and Increased use by seniors who walk the perimeter



East Side



East Side 2009



Rain Garden, Promenade, Roll Hill November 2017



Tennis Courts



Note cracked uneven surface 2009



Totally Reconstructed courts in 2017



East Side Looking South



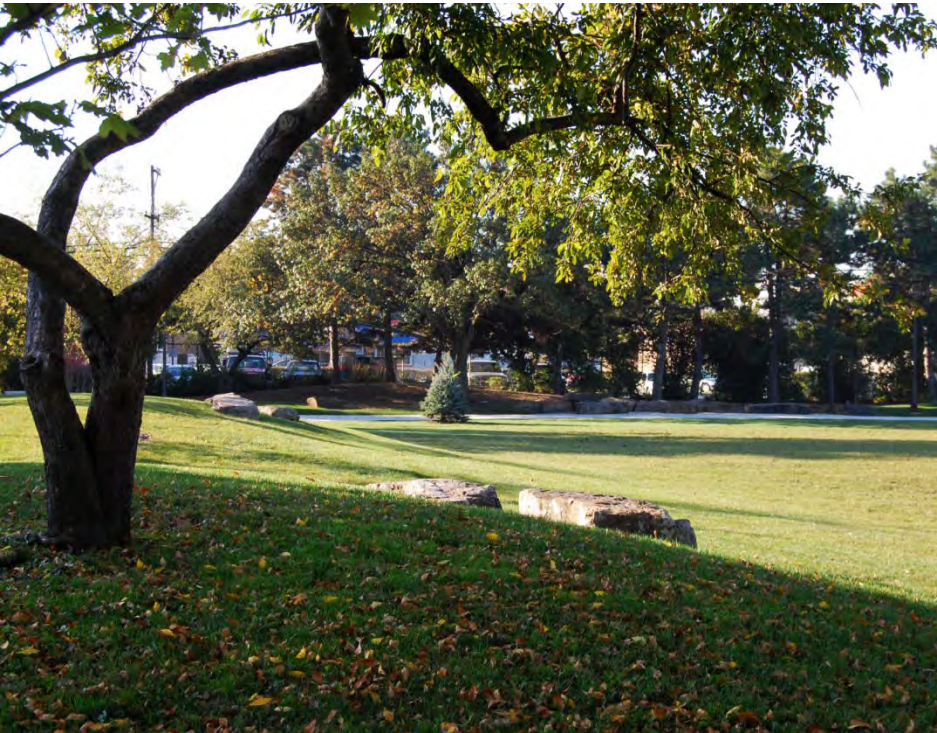
Looking South 2009



Looking south 2011



Mounds Enlarged and Boulders Added





The Park in 2009: Drainage and Soil Issues





The Park in 2017: Best Field





PARK DISTRICT
of OAK PARK

Seating Nook 2017





PARK DISTRICT
of OAK PARK

Looking west in 2009





Looking west in 2017





SW Corner in 2017





PARK DISTRICT
of OAK PARK

SW Corner in 2017





PARK DISTRICT
of OAK PARK

Looking South on West Side





PARK DISTRICT
of OAK PARK

West side Looking North 2017



Euclid Square Master Plan Update - Park District of Oak Park

Altamanu Inc.
landscape architecture + urban design + planning



PARK DISTRICT
of OAK PARK

West side Looking North 2009



Euclid Square Master Plan Update - Park District of Oak Park

Altamanu Inc.
landscape architecture + urban design + planning



PARK DISTRICT
of OAK PARK

West side Looking North 2017



Euclid Square Master Plan Update - Park District of Oak Park

Altamanu Inc.
landscape architecture + urban design + planning



PARK DISTRICT
of OAK PARK

Playground 2009



Euclid Square Master Plan Update - Park District of Oak Park

Altamanu Inc.
landscape architecture + urban design + planning



PARK DISTRICT
of OAK PARK

Playground 2017



Euclid Square Master Plan Update - Park District of Oak Park

Altamanu Inc.
landscape architecture + urban design + planning



DISCUSSION