

Andersen Park



PARK DISTRICT OF OAK PARK

**In partnership with the community, we enrich
lives by providing meaningful experiences through
programs, parks, and facilities.**



Andersen Park Master Plan Update

Agenda – 10.27.15

- Review the history of Andersen Park
- Review the next phases of development
- Discuss design ideas & alternatives and hear your input

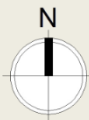
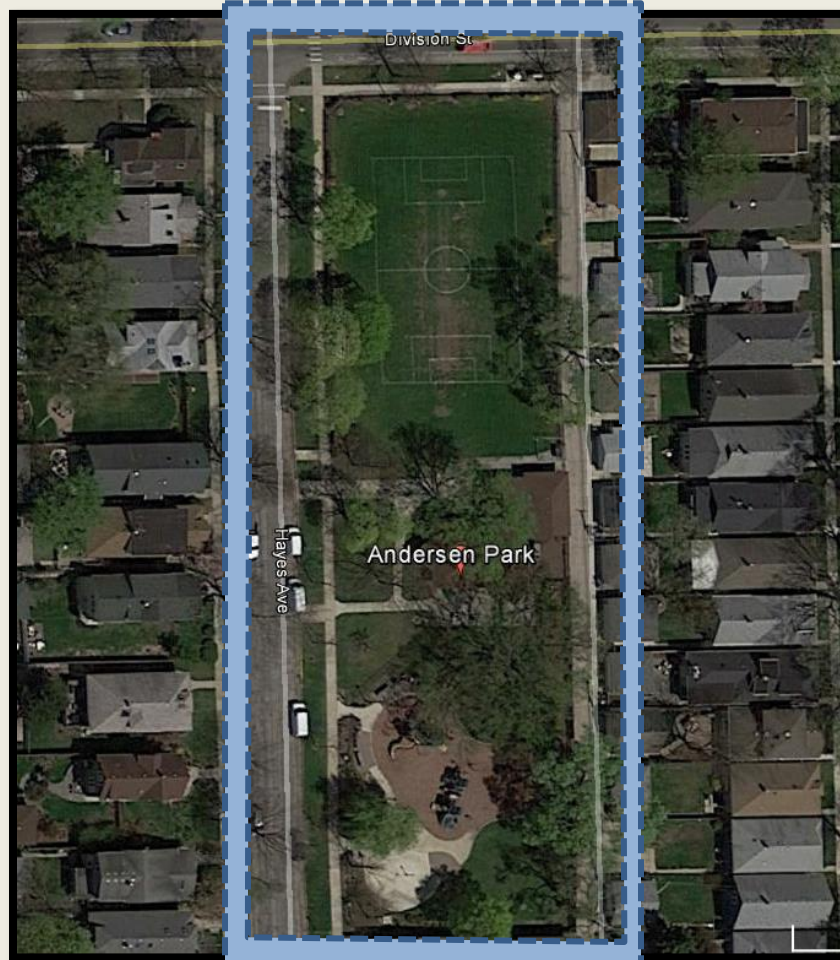


Andersen Park Master Plan Update



Location Map:

Andersen Park Today



Andersen Park Master Plan Update

- Acquired in 1916, the park is named after children's author Hans Christian Andersen.
- The recreation center is originally designed by architect John S. Van Bergen.
- Renovations were made in 1985 and 2006.



Andersen Park Master Plan Update

Phase II Design Ideas include:

1. New Park Entrance
2. Lacrosse/Soccer Rebound Wall
3. Archery Classes
4. Outdoor Education
5. Pre-school Nature Learning Area
6. Fitness Stations
7. Covered Picnic Area

Evaluation Comments from the current Comprehensive Master Plan:

1. The walk on the west side of the building suffers from ice issues created by snow melt from the roof re-freezing at night. Permeable paving should be considered as solution.
2. A secondary entrance point in the northeast corner could deter the use of “dog run” and make the park more accessible.
3. Constructing a paved connection, from the seating area to the playground would improve the area where the lawn is worn from heavy use.
4. Stoop has settled on the east side.



Andersen Park Master Plan Update

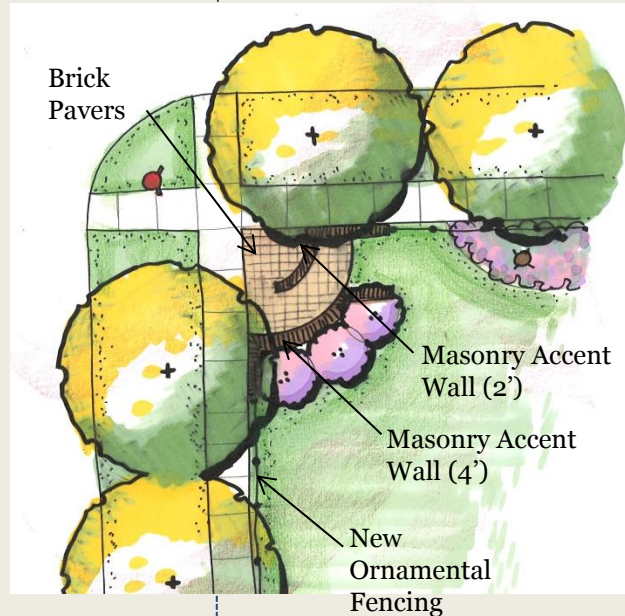
New Park Entrance:

A secondary entrance point could deter the use of “dog run” and make the park more accessible



Andersen Park Master Plan Update

- New welcoming park entry which creates a sense of arrival and will remove the “dog run” effect



- Brick pavers
- Masonry accent walls with stone cap to compliment the building
- Park name on the wall
- New ornamental fencing



Andersen Park Master Plan Update

Lacrosse/Soccer Rebound Wall



Rebound Wall



Andersen Park Master Plan Update

Archery Classes



Archery Field



Andersen Park Master Plan Update

Outdoor Education Area



Andersen Park Master Plan Update

Outdoor Education Design Elements



Andersen Park Master Plan Update

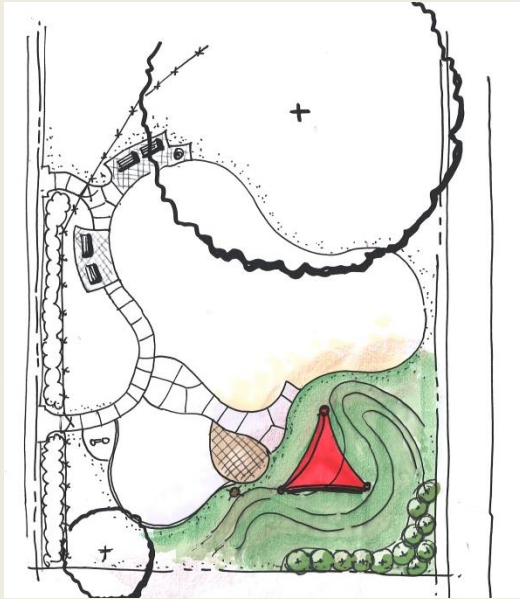
Southeast corner – existing conditions



Andersen Park Master Plan Update

Southeast corner – Option A

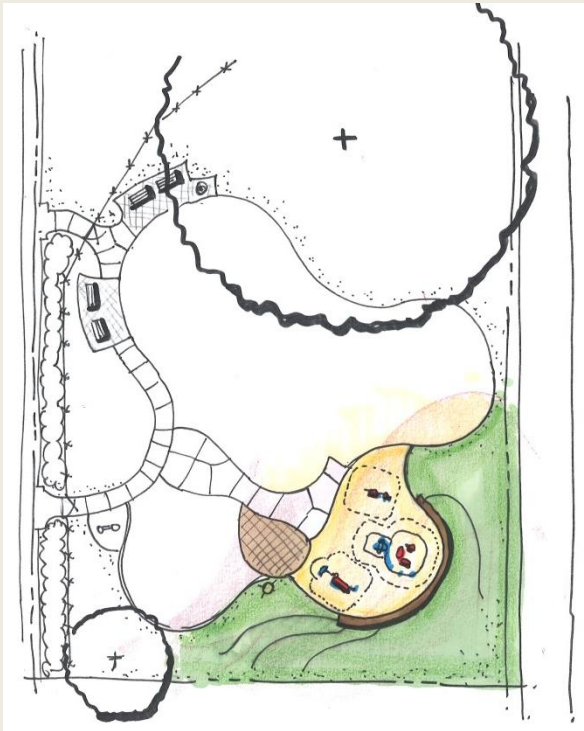
- Picnic Area with shade sails



Andersen Park Master Plan Update

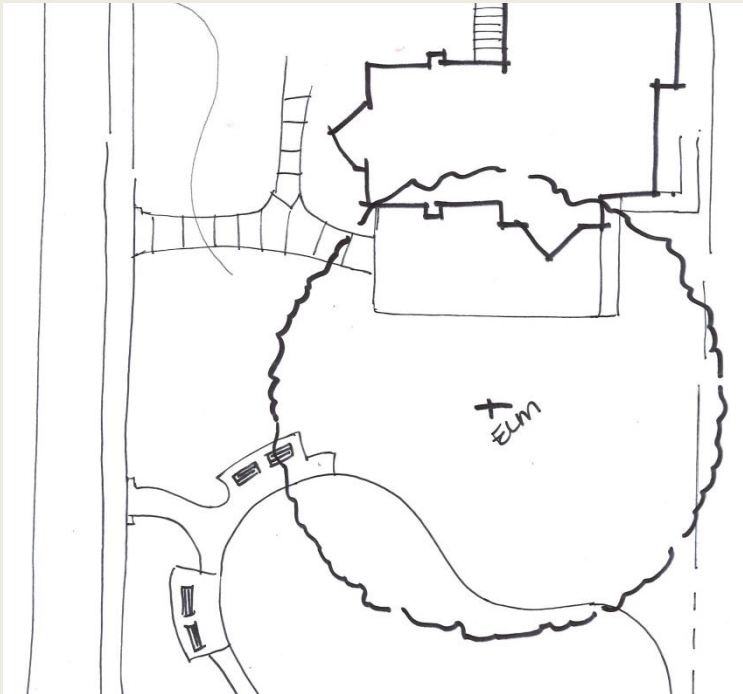
Southeast corner – Option B

- Fitness Stations



Andersen Park Master Plan Update

Existing Patio Space



- Very large Elm tree with large root zone
- How is it currently used?
- What do you envision?

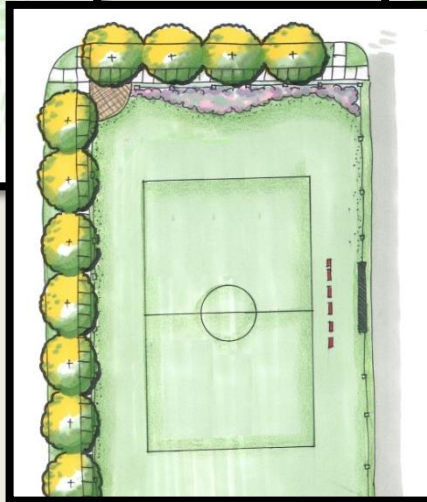


Andersen Park Master Plan Update

Design Ideas Recap



New Park Entry

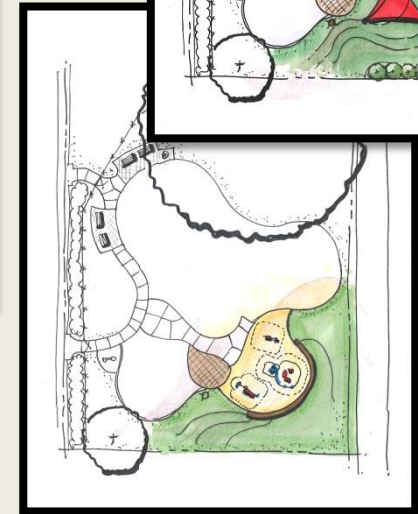
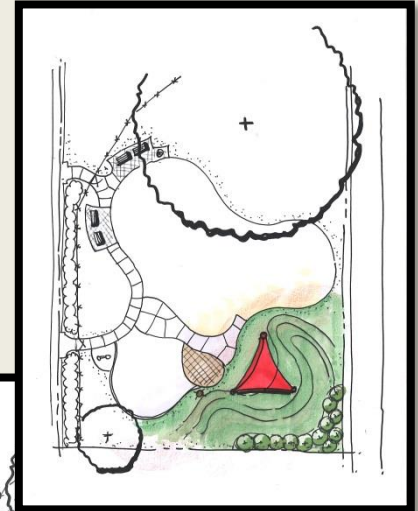


Lacrosse / Soccer Rebound
Wall/Archery Area



Outdoor Education
Area

Picnic Area or Fitness Stations



Andersen Park Master Plan Update



Questions & Answers

