



Oak Park Conservatory Master Plan Update Wednesday October 4th 2017



Altamanu Inc.
landscape architecture + urban design + planning



Tonight:

Timeline of Improvements

A look at the Master Plan from 2008

What has been added or changed since 2008

Discussion on How to Go Forward





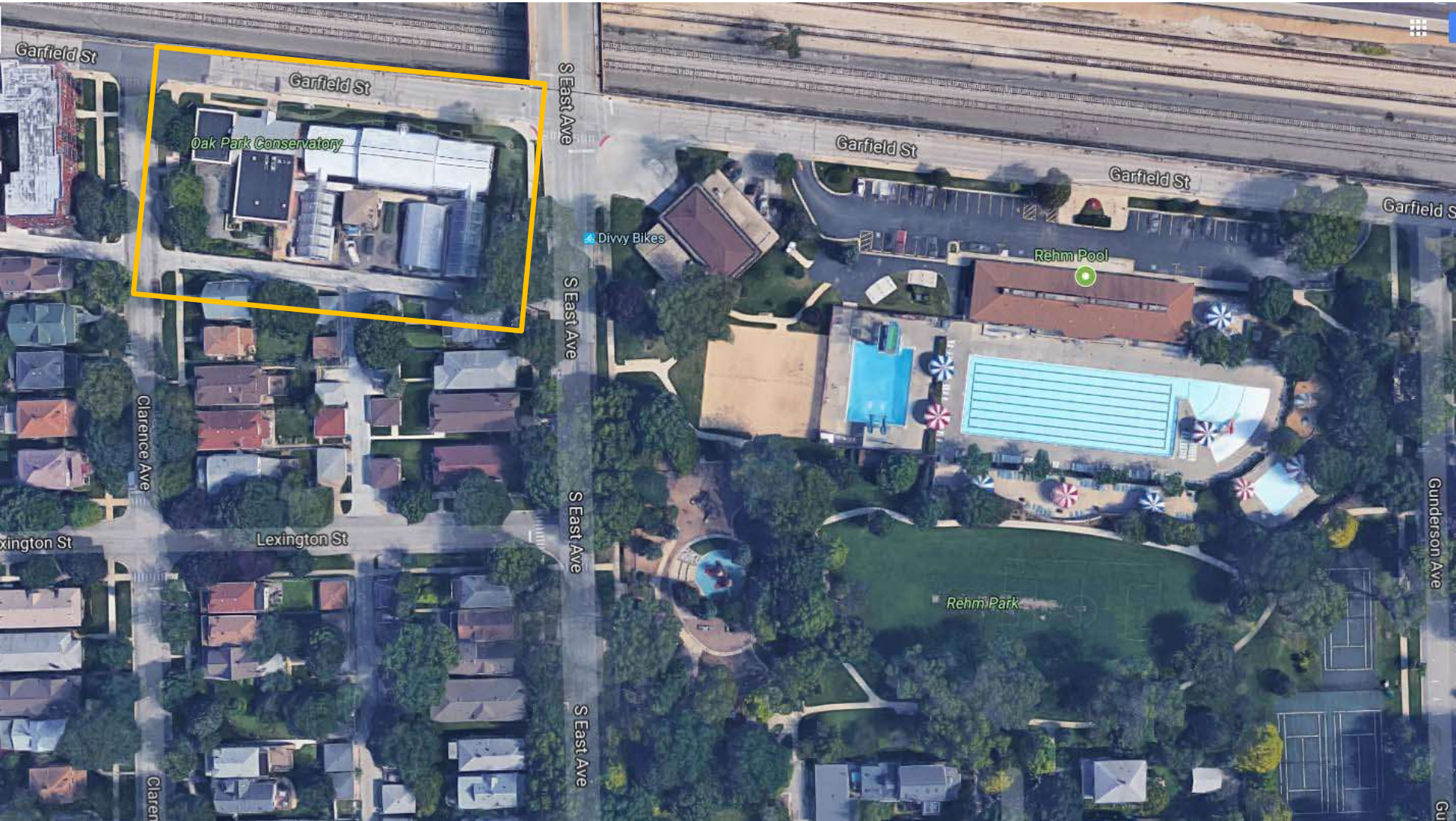
Area Context: Parks & Schools





PARK DISTRICT
of OAK PARK

Site Context



Timeline

- 1929** The Edwardian-style glass structure was built
Over the years the building fell into neglect.
- 1970** Citizens led a successful drive to preserve the Conservatory
- 2000** Conservatory Center was opened with expanded space and facilities and public events.
- 2005** Named to the National Register of Historic Places
- 2008** PDOP carried out a public master planning process
- 2011** Rubinstein Memorial Garden was opened.
- 2015** Elsie Jacobsen Discovery Garden and East Avenue Bioswale opened. New setting and Entry for the front of the Conservatory



OAK PARK CONSERVATORY
PARK DISTRICT OF OAK PARK

MASTER PLAN RECOMMENDATION



THOMPSON DYKE & ASSOCIATES

NOVEMBER 2008

Master Plan 2008



Garfield Street Frontage



Clarence Ave. & Garden Area



Work & Maintenance Area



East Ave. Area



Recommendations for West Side



- Bike Racks (Yes)
- Entrance Drop-off (Yes)
- Fence and Gateway (Yes)
- Sculpture/Water Feature (Yes)
- Special Exhibit Gardens (Yes)
- Carriage Walk (No)
- Patio with Stone Paving (Yes)
- Trellis (Yes)
- Vacated Alley (No)

Vacated Alley? Discuss Later



- Gain Space
- Potential of Expansion

West Side 2017 Very Successful Rubenstein Garden





2017



Recommendations for North Side

- Add Planting and Sign (Yes)
- ADA Ramp - Entrance Plaza (Yes)
- Flag Pole and Kiosk (Yes)
- Increase Sidewalk Width (Yes)
- 18" Brick Retaining Wall (No)
- Native shrub plantings (Yes)
- Special Paving and Sign (Sign yes Paving No)



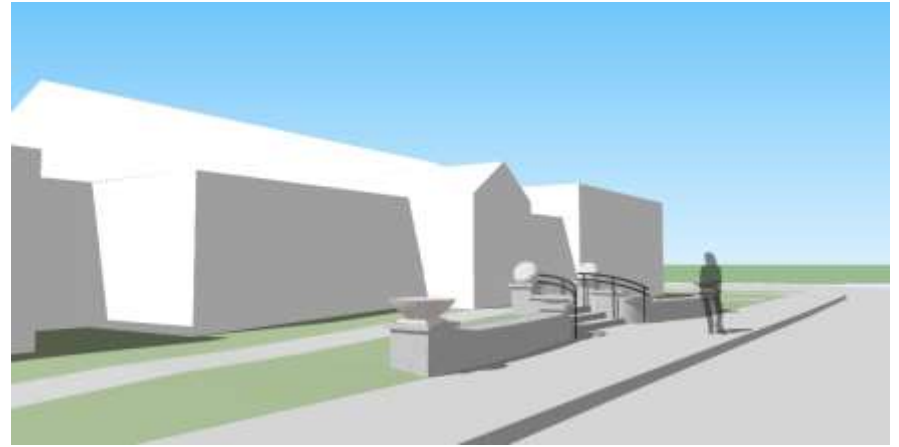
Do you remember how it looked?







View east to entry



View west to entry

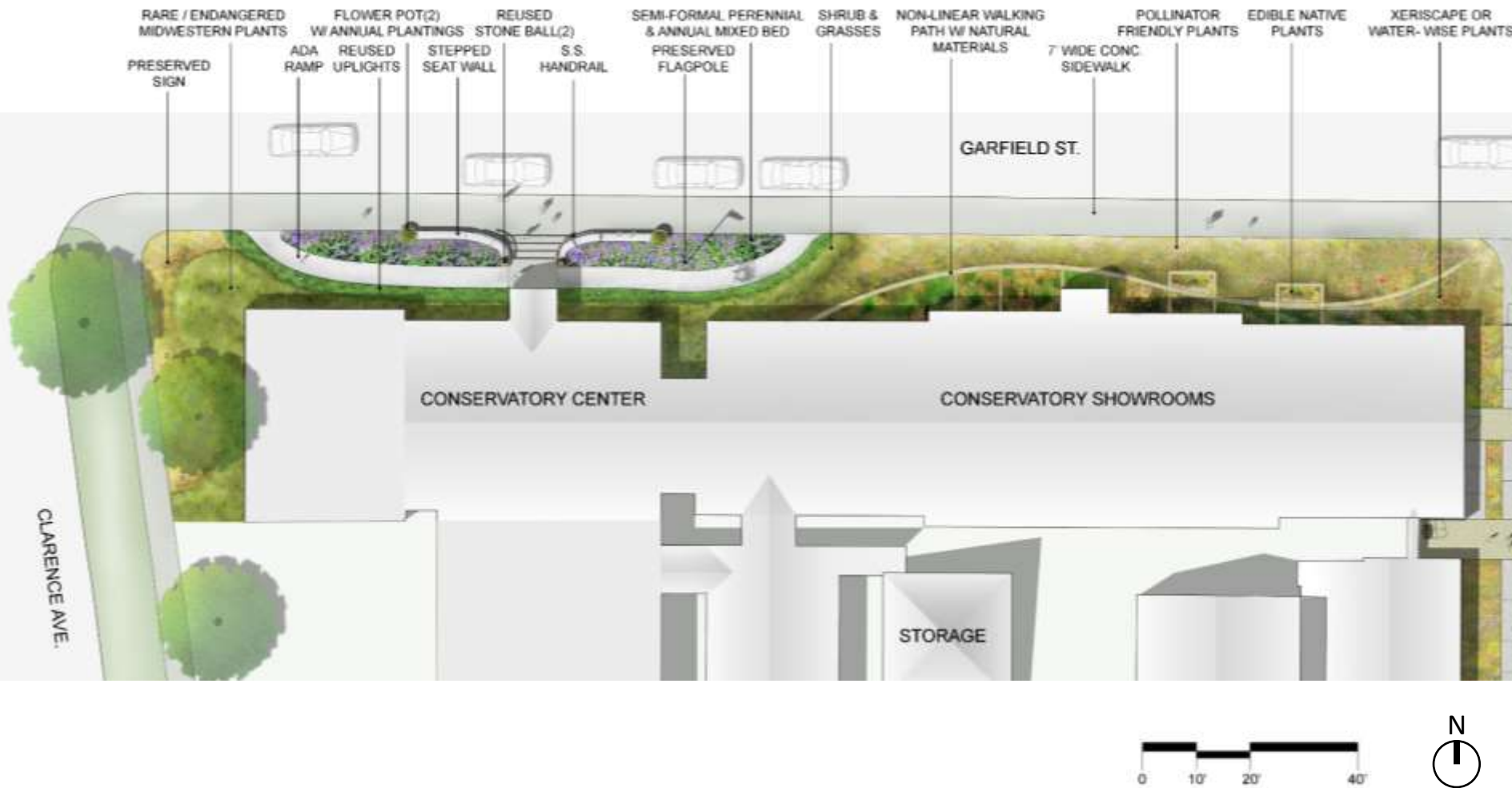
Design from 2013

Design for new entryway & ramps,
and the reuse of Stone Pier Finials



Overall view

Design 2013



North Side 2017



North Side 2017

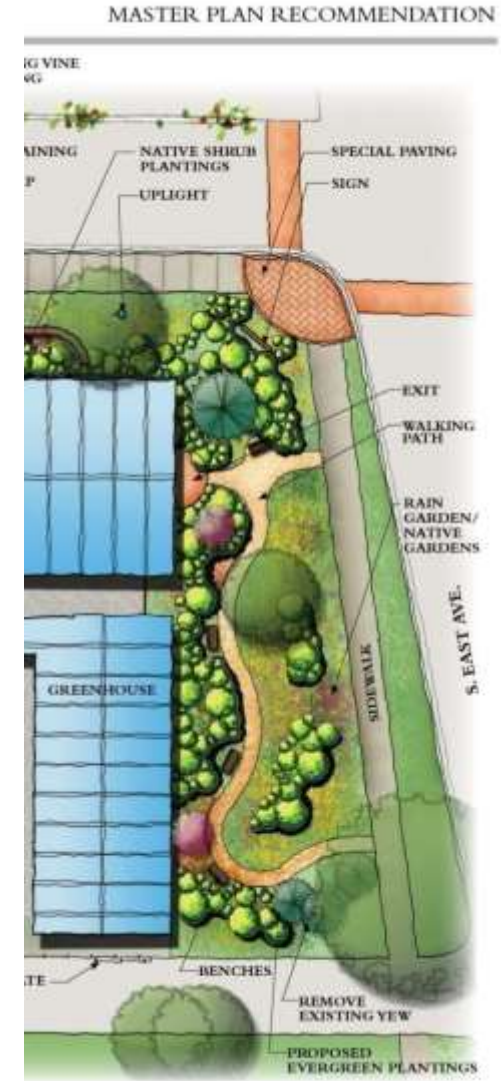


But there are still Issues to be Addressed



Recommendations for East Side

- Specialty Paving
- Entrance Drop-off
- Rain Garden
- New Path
- Evergreen Plantings



Altamanu Inc.
landscape architecture + urban design + planning

PM&E DISTRICT
at 2344 FOUR

Redesign & the Elsie Jacobsen Discovery Garden



Altamanu Inc.
landscape architecture + urban design + planning

PARK DISTRICT
of OAK PARK

Do you remember what it was like?



Garden 2015









Altamanu Inc.
landscape architecture + urban design + planning

PARK DISTRICT
OF OAK PARK



Vision Statement for the East Avenue Garden

A Garden for Learning (for all ages)

- Words: **natural, get close to nature, take care of nature, appreciate nature**
- Extend the Conservatory experience (the “**fourth show room**”)
- Establish a **connection between the visitor and the natural world**
- Exhibit good plants for our **climate/part shade, ease of maintenance, special plants**
- Encourage visitors to visit the Conservatory by creating **an intriguing garden**
- Feature **plants to be sold at the Plant Sale**
- Garden **composting, rain garden** and other **resource management systems**
- Accentuate the **change of seasons.**

A Peaceful Retreat (for all ages but most significant for adults)

- Words: **relaxing, welcoming, safe, enclosure, nature, tranquil, a place to stay**
- **Noise abatement**
- **Shade**
- A **barrier** to separate garden from street and create a “garden room”
- Places to **sit, picnic and read; scaled for both adults and children**
- **Passive** enjoyment of nature
- **Access from the street** for people needing a period of peace and quiet
- **Focal point** – visual and aural (**water fountain**) to concentrate attention

A Discovery Place (emphasis on children with their families)

- Words: **interactive, playful, explore, surprises, discovery**
- Fun features: **water play, rotating displays, whimsical things**
- A **meandering path** that leads to discoveries and surprises, **special nooks**
- Active involvement such as things to **touch, manipulate**
- **Interact with nature**
- **Child-scale** construction
- Fencing to **secure children from traffic**, wandering away etc.
- **Reentry to Conservatory** through Desert Room (access to bathrooms, water etc.)
- **Coordinate play experience with Rehm Park** which has lots of climbing structures

From 2014

Site considerations for all three

- **Protect elm** roots
- Keep spruce for shade
- Move plants away from open greenhouse windows to discourage pests
- Plantings for ease of maintenance: **irrigation system**
- **Protection from people/animal damage**
- **Security for potential access door from Desert Room**
- **Noise from Eisenhower**
- **Protection from traffic on East Avenue**
- Create **views** through the windows into the greenhouse structures
- **Comfort-shade**, places to sit

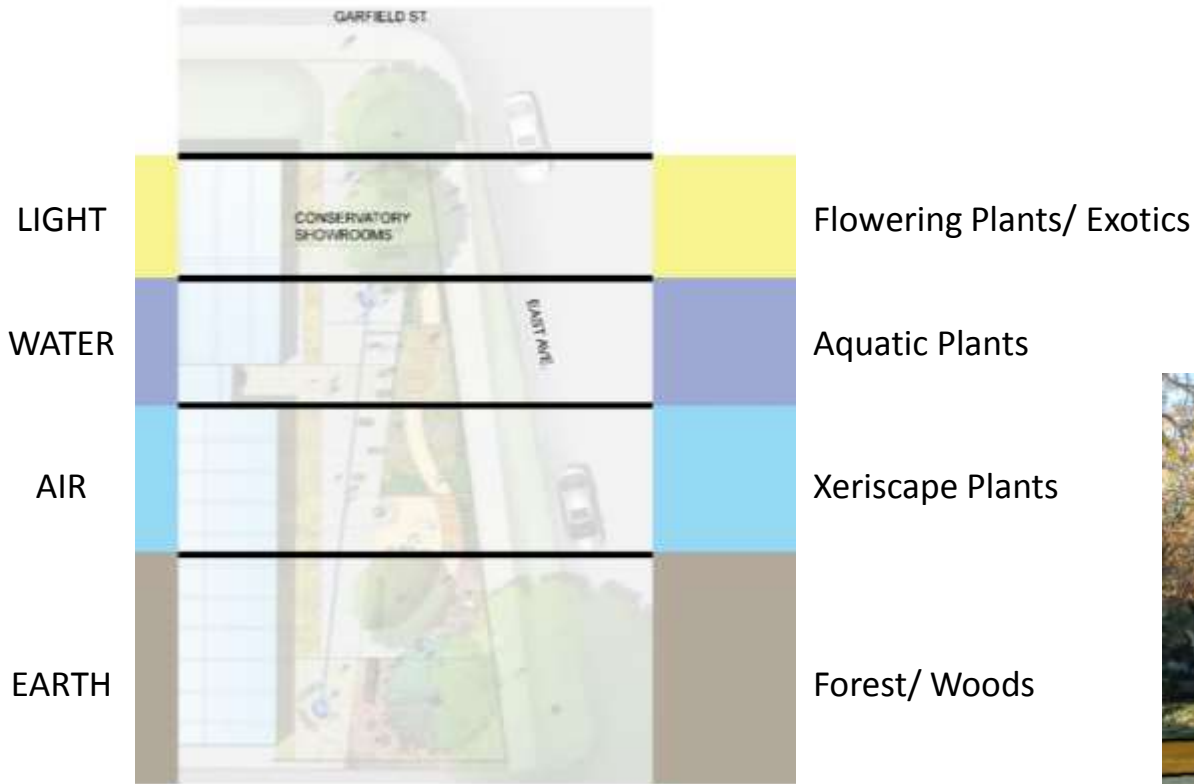


East Garden

Conservatory Landscape, Oak Park, IL

Statement

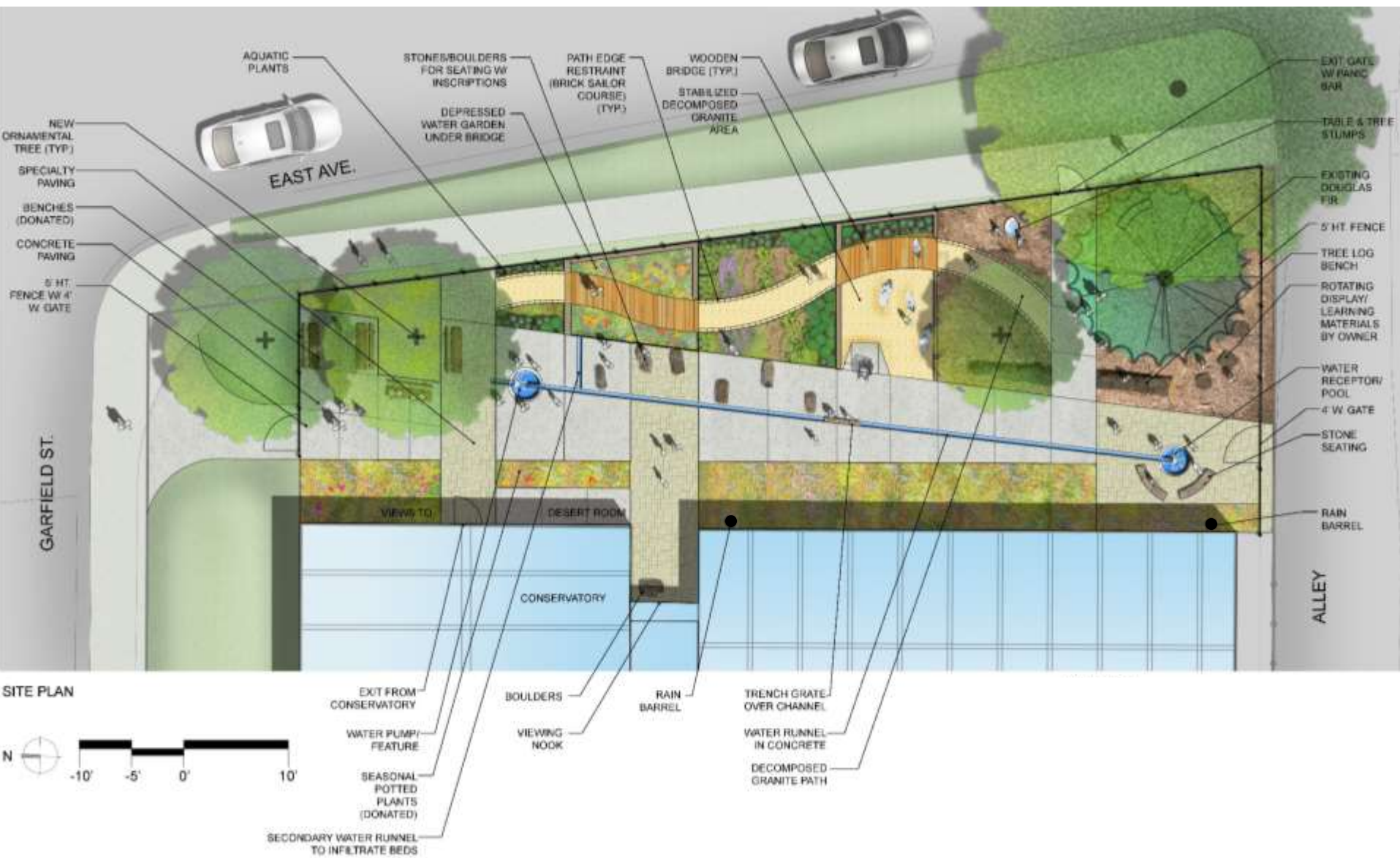




FOUR ZONES



Subdividing lines from conservatory architecture

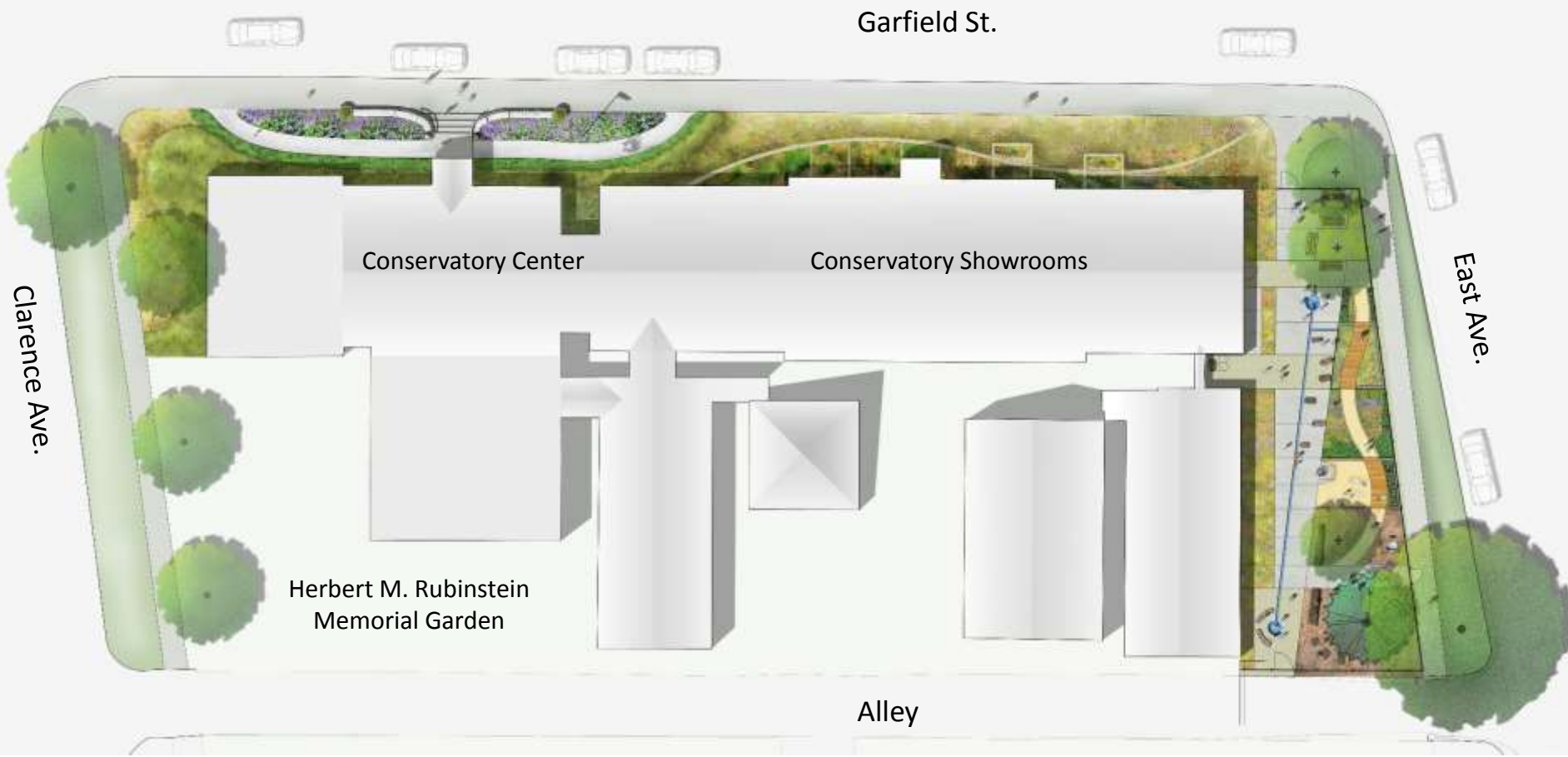




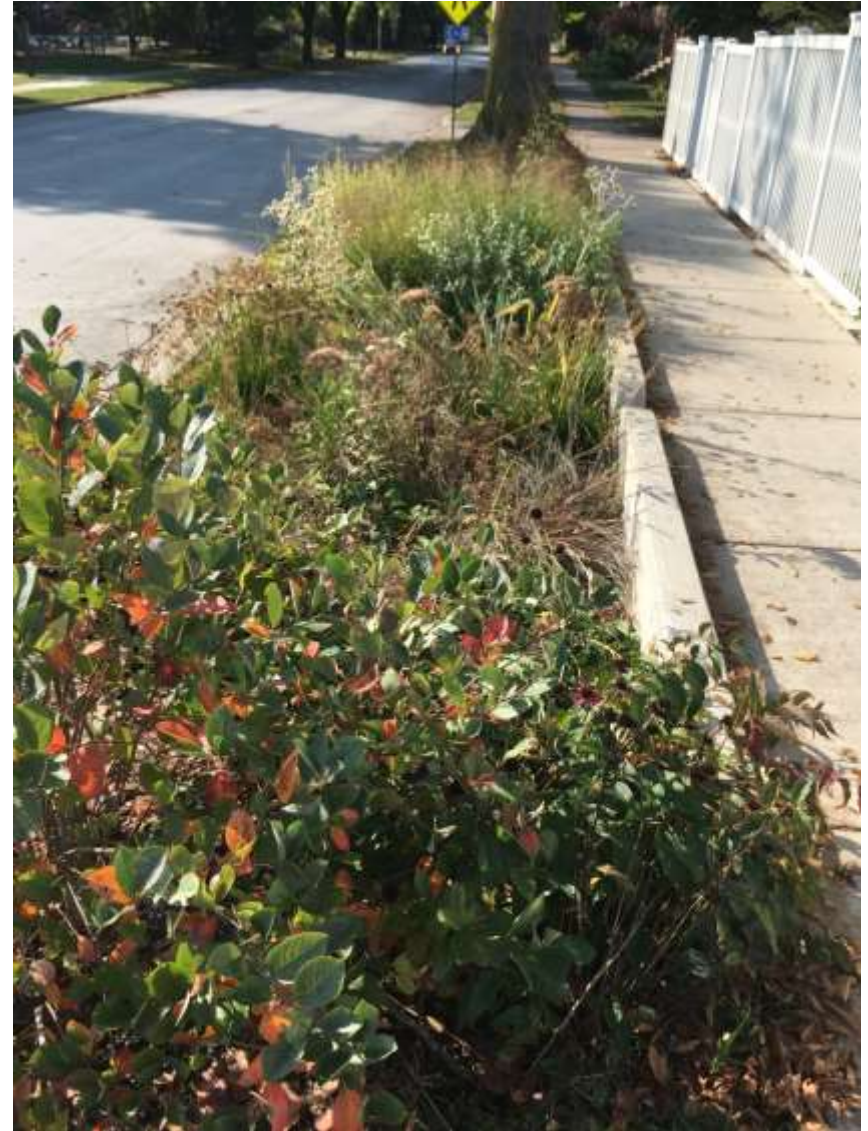
East Garden
Conservatory Landscape, Oak Park, IL

Perspective Rendering





Bioswale



Altamanu Involvement

- Redesign of setting for Conservatory
- New entryways
- New Discovery Garden and Rain Garden/Bioswale

Project Duration: 11 months

Design beginning date: September 2014

Construction completion: August 2015

Construction cost: \$370,000



Expenditures since 2010

2017

Fin Tube Replacement \$109,773.00

2016

Pump Relocation \$11,252.00

Heating System Repairs \$12,185.65

Ventilation System \$75,750.00

2015

East Garden and North Entry \$397,585.57

BioSwale \$14,949.77

Dryvit \$7,460.00

Building Repairs \$17,521.51

2014

East Garden and North Entry \$57,639.80

Bioswale \$4,787.83

Heating \$1,868.00

Building Repairs \$6,215.00



2013	
Boilers	\$18,590.00
Architecture	\$2,915.62
2012 Boilers	\$131,221.75
Basewall	\$13,380.00

2011	
Tropic Room	\$16,029.01
Bamboo Flour	\$10,580.00
Security Cameras	\$9,460.00
Signage	\$11,444.00
Garden Project	\$176,121.20

2010	
Tropic Room	\$279,737.22
Garden	\$165,480.82

Total \$1,551,948.00



Long Term Expansion?



Altamanu Inc.
landscape architecture + urban design + planning

Long Term Expansion?



Altamanu Inc.
landscape architecture + urban design + planning

PM&E DISTRICT
OF OAK FORD

Long Term Expansion?



Altamanu Inc.
landscape architecture + urban design + planning

PM&E DISTRICT
of OAK FORD

Discussion

