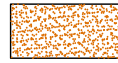


Paving

- Re-lay pavers at entrances to bring level with adjacent concrete.
- Top-dress gravel path with specially-sourced gravel.
- Remove "grass-crete" path/drive, replace with interlocking pavers to match other pedestrian entrances. Re-align paths to address new environmental learning center and discovery garden on east side.



Gravel walking path



Existing concrete paver walk, re-set as needed



Concrete Pavement

Site Furnishings and Fencing

- Add simple, low metal hoop fence to visually reinforce path edges and protect ground-level woodland plantings.
- Install additional area lighting along path. Change heads on existing units to reduce unpleasant glare.
- Add quick-couplers throughout site for hand-irrigation.

Reorganized Arboretum

- Goal: Encompass majority of commemorative trees. Improve organization and arrangement of trees; limit scope of commemorative trees to adhere to directives of master planting plan.
- Remove declining/inferior trees/shrubs. Organize plantings according to master planting plan by transplanting smaller trees and add trees and shrubs according to master planting plan.

Event Lawn

- Goal: Preserve large open grassy lawn for events and passive use.
- Improve quality of turf to withstand heavy usage during theater and art fair events. Over-seed thin or bare areas as necessary to improve turf density. Maintain clear cultivated turf edge.
- Utilize relative low point for ice skating.

Future Connection to Downtown Oak Park

- Facilitate eventual pedestrian access way to nearby downtown Oak Park and Lake Street.

New Environmental Learning Center

- Demolish existing garage.
- Construct new building to house environmental learning activities and interpretive elements related to the natural and cultural history of the park. The building would house public restrooms and Park District event-related storage. Space for seasonal or event-related concessions also possible. Building to have electrical, plumbing, and heating for year-round use.
- Linkages would be provided to outside interpretive areas.
- Additional paving would permit seating for picnics, craft events.

New Discovery Garden

- Goal: Create a sensory-rich and versatile outdoor learning area to support the environmental education programming of the Park District.
- Integrate such features as a rain garden, native woodland and savannah understory plantings, bird viewscope, and examples of local geology, animal footprints, and fossils.
- Include interpretive signage.
- Add simple, low hoop fencing along paths to help defend plantings.

Restored Native Woodland Planting

- Goal: create a native woodland/savannah planting. Manage planting to create a diverse, fairly self-sustaining "layered" planting - overstory, understory, shrubs, and ground level vegetation.
- Use a native plant palette.

First phase: remove woody and herbaceous weeds by digging and herbiciding. Accelerate removal of invasive Norway Maples. Install leaf mold and shredded wood mulch.

Second phase: Complete removal of invasive Norway Maples. Begin addition of understory trees and ground plane planting according to master planting plan. Continue leaf mold replenishment.

Third phase: Complete addition of understory trees and ground plane planting according to master planting plan. Continue leaf mold replenishment.

Enhanced Woodland Wildflower Garden

- Goal: Preserve, enhance, and defend existing native wildflower planting. Extend planting to east. Establish funding, management protocols to maintain quality of planting and interpretive value.

Add selected understory trees and shrubs for multi-season interest and to tie into Woodland Planting.

Add simple, low hoop fencing along paths to help defend plantings.

Reinforced Buffer Plantings

- Goal: Buffer park from effects of alley, parking lots, street through mixed plantings of evergreens and shrubs. Favor native plant material; remove invasive exotics.

Sculpture Garden

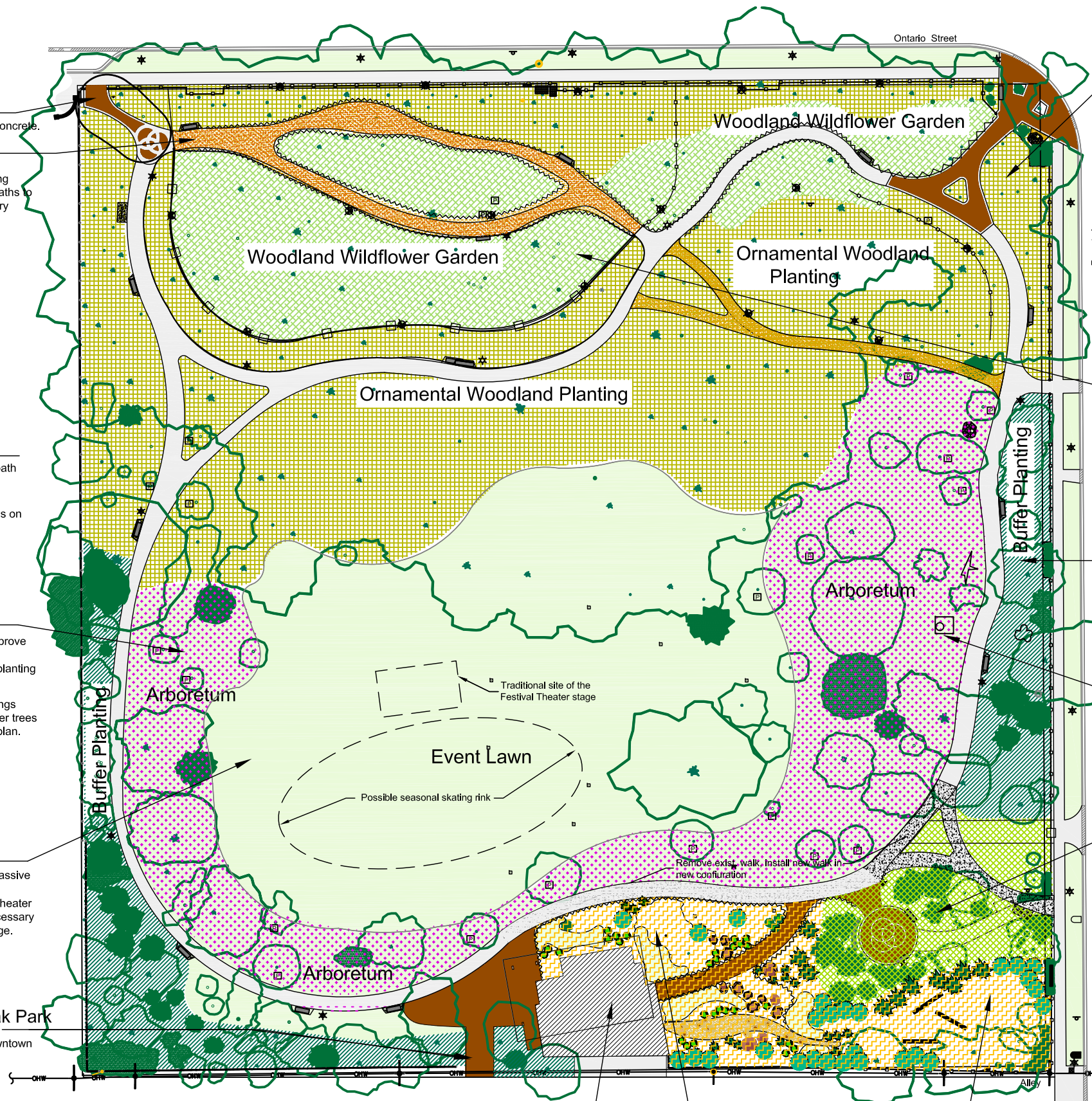
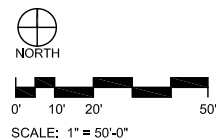
- Goal: Develop a assemblage of permanent outdoor massive sculpture.

Rehabilitated South Entrance Garden

- Goal: Re-configure existing pedestrian entrance to park to become main access point. Rehabilitate and enrich plantings, replace site furnishings to create a more coherent garden space.
- More attention to detail: diverse plantings with trees, shrubs, groundcovers, and flowers. Up-graded paving and site furnishings.

Primary Goals of Grant

- Rehabilitate and enrich native plantings throughout the site.
- Construct Environmental Learning Center for the District.
- Create a nature Discovery Garden to associate with new Environmental Learning Center.



412 MADISON STREET
OAK PARK, IL 60302
P 708.524.1484
F 708.524.1886
CYLACYLADSIGN.COM



TOM BASSETT-DILLEY ARCHITECT, LTD.
381 HARBORON STREET OAK PARK, IL 60394
WWW.DRAWINGONPLACE.COM
708-434-0381 PHONE 866-665-2380 FAX

Austin Gardens Master Plan

Park District of Oak Park
218 Madison Street, Oak Park, Illinois 60302

