



# Barrie Park Site Master Plan

## Community Meeting Number 2

Wednesday, March 11th, 2015





# Barrie Park Site Master Plan: Process

**Wednesday, March 11th, at 7pm**

**Community Mtg #2 - draft concepts, Barrie Center**

**Posted Friday March 13th**

**2<sup>nd</sup> Questionnaire posted (with site concepts)**

**Closes Friday March 20th**

**Monday March 16<sup>th</sup>**

**Altamanu to present concepts to P. D. Citizen Committee**

**Thursday March 19<sup>th</sup>**

**Altamanu to present concepts to Park Board**

**Wednesday April 22nd, at 7pm**

**Community Mtg #3 Draft recommendation, Barrie Center**

**Date TBD**

**Community Mtg #4, if necessary, to present revisions**

**Thursday June 4th**

**Altamanu to present recommendation and cost estimate to Board at Committee Meeting at the Conservatory**

**Monday June 18<sup>th</sup>**

**Park Board to consider accepting final plan at regular Park Board meeting, 218 Madison Street.**



# Barrie Park Site Master Plan: Issues

Extremely difficult and complex design issues

- Regional versus local park (normal)
- Separation of Park and Center (Unique)
- Center and various levels (Unique)
- Large area on top of the Reservoir (Unique)
- Large playing field: Scale? Materials? Drainage?
- Sled Hill (Unique)

Therefore tonight we are looking for direction not final concepts



# Barrie Park Site Master Plan: Agenda

Tonight:

Large presentation lets not worry if we don't get to all of it

Answers to the questions you asked

Comments from the first community meeting, from emails  
the on-line survey

Take a look at each area and some concepts

Your thought and ideas

But First.....



# Barrie Park Site Master Plan: Security/Safety

## Officer Rumoro

- No reports of excessive crime. Park relatively safe. The police make regular visits
- Most frequent complaint is disrespectful basketball players at and on route and leaving the park. Most are not OP residents
- Area kids hang out over reservoir good to increase utilization
- Meeting 2<sup>nd</sup> Tuesday of every month at Barrie Center for area residents to come and ask questions
- If in doubt residents should call the 911 or non-emergency line.



# Barrie Park Site Master Plan: Questions

Your questions and issues to ponder before we get to concepts

What are the national requirements for Open Space and how does Oak Park measure up?

- National Recreation and Park Association (NRPA) standard:

10 acres of park space per 1,000 residents

With 82.29 acres of park space we have

1.6 acres per 1,000 residents

**So every inch counts!!!!**



# Barrie Park Site Master Plan: Questions

You also asked about National Trends in Park Design.  
And they all came up at the last meeting

“Park system professionals are pummeled by the competing demands of organized sports enthusiasts, natural resource advocates, neighborhood groups, parents, teenagers, senior citizens, public safety officials, environmental regulatory agencies and other individuals and entities.”

(NRPA)





# Barrie Park Site Master Plan

In other words.....

- Everyone wants their vision realized
- and
- There is just not enough space





# Barrie Park Site Master Plan: National Trends

National trends were represented at the last meeting

## NRPA

- Soccer has attracted 60 percent more participation than any other recreational sport during the past decade.
- Leagues for both genders and ages ranging from 4 to 60
- Multiple other sports such as Lacrosse also taking away from base ball numbers



# Barrie Park Site Master Plan: National Trends

National trends were represented at the last meeting

## However Local Needs due to lack of open space

- “We need a place to play U11 and U12 – high demand in South Oak Park.”
- And requests for another baseball/T Ball field.
- “The fields in Oak Park are totally overused and can’t recover”



# Barrie Park Site Master Plan: Artificial Turf

## Comments from Focus Group and Last Meeting

- Representatives of the leagues and associations and staff were in favor of Artificial Turf
- Some residents were against art turf in principle and some
- Concerned that the field would need to be fenced and change the use of the park: no events, no dogs, and restrict unstructured use of open space



# Barrie Park Site Master Plan: National Trends

## Sustainability and Biodiversity (NRPA)

“Calls for creating parks that serve as buffers for climate change and for preserving biodiversity underscored a new focus on parks as ecological systems.”

### Last Meeting

- No mow areas,
- more plantings and trees
- Habitat
- Prairie
- Gardens
- Natural Play areas



A hint of no-mow grass areas at Mills



# Barrie Park Site Master Plan: National Trends

Active Adults: Fastest growing segment of communities nationwide

“Seniors have lots of interest in public garden spaces and walking. Add walking loops with distance markers.”



“Thoughtful Neighborhood and Park design encourages active aging.”



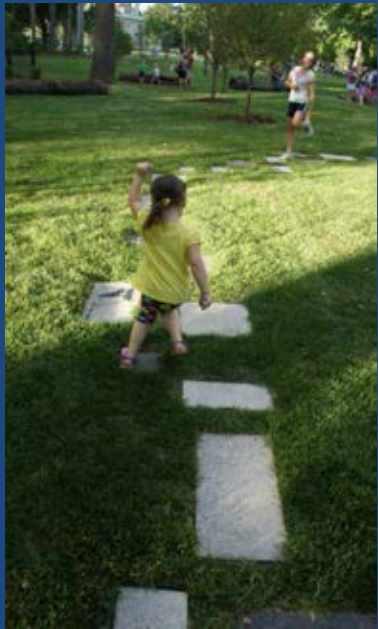


# Barrie Park Site Master Plan: National Trends

Young People (NRPA) “Calls for the following:

- Spontaneous outdoor play
- Connecting young people to the outdoors and nature
- And to the community”

**Last Meeting:** “Need to represent those who are not here” and “fringe” culture



Mills Park



Mills Park



Grant Park Skate Park



# Barrie Park Site Master Plan



Contrasting views at last meeting  
leads us to:

## RASHOMON

### Synopsis:

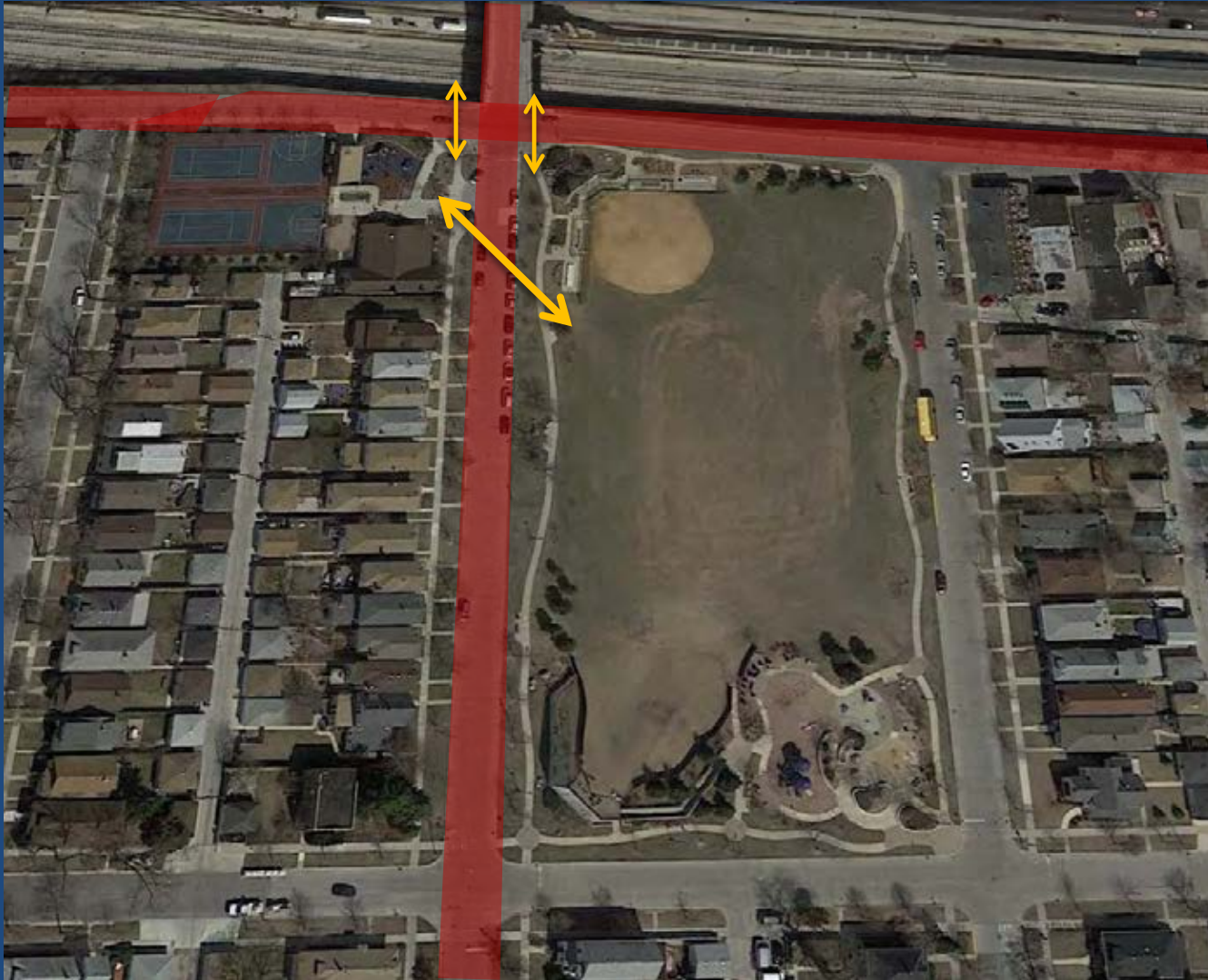
A series of horrific events take place.

each of the four participants give  
different views of what happened





# Issues and Concepts for the Center and Reservoir Access and Safety

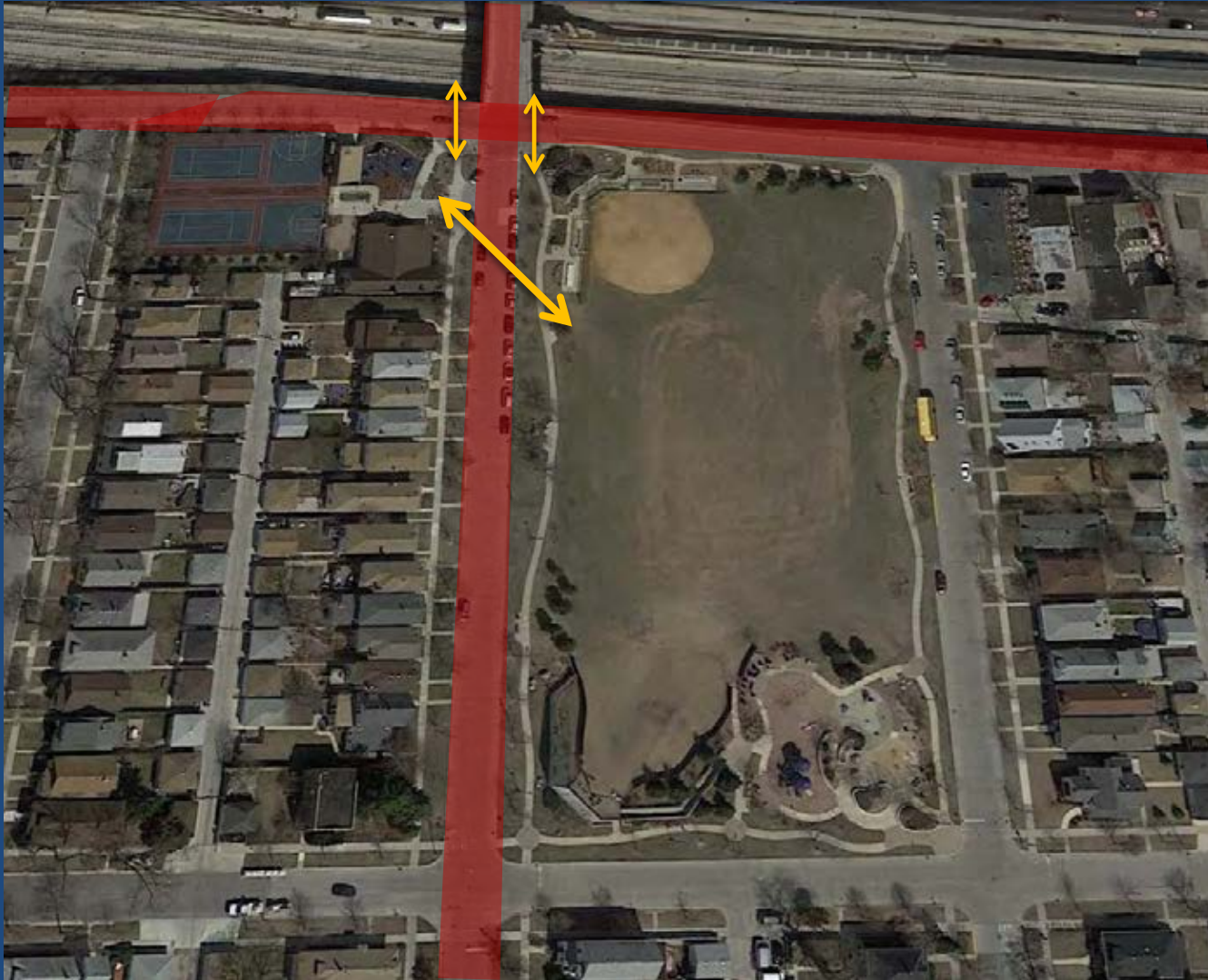


Barrie Park - Park District of Oak Park





Park and Center separated by Lombard, kids chase balls into street, run back and forth to Center, through cars and drop off, and residents walk on the street in winter due to ice on paths



Barrie Park - Park District of Oak Park



# Lombard terminates just north of Roosevelt



Barrie Park - Park District of Oak Park





# Suggestions for Lombard Last Meeting

- Speed table and bump-outs
- Close Lombard for all vehicular traffic, with the exception of emergency vehicles and drop-off
- Make it a woonerf, a ped/bike focused street. “People walk on Lombard or Garfield already due to ice on paths in winter.”
- Make Lombard a one-way street southbound
- Make drop-off longer



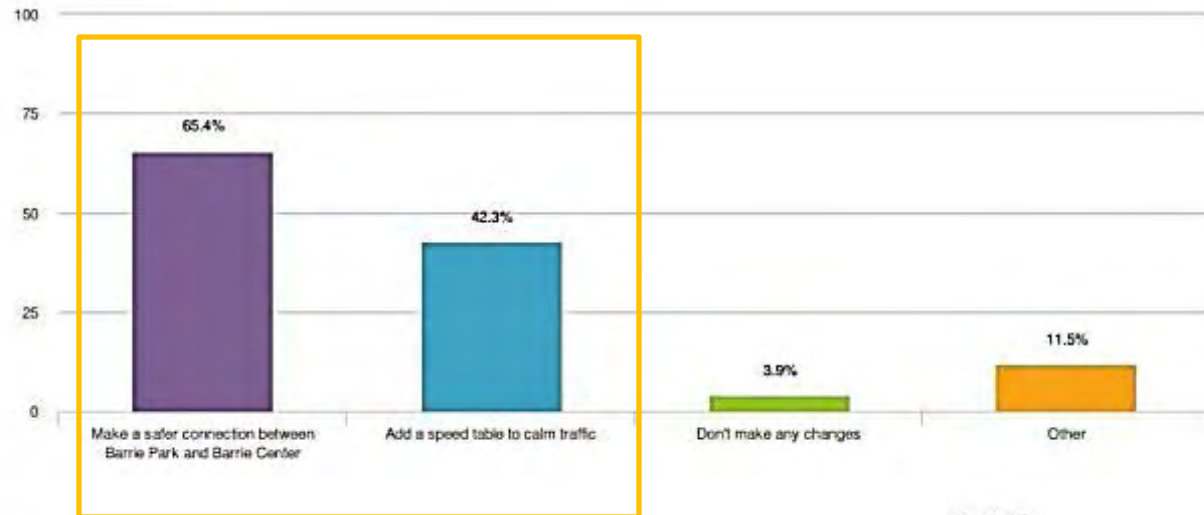
# Village Engineers Comments on Lombard

“Any proposal will have to be presented to Transportation Committee”

- Speed table at Barrie Center - OK, but no speed bumps
- Make Lombard one way south - No, a lot of traffic from Harvard heading north
- Add a series of bump outs - OK
- Turn Lombard into a “Woonerf” – OK with concept but cost?
- Close Lombard to all but emergency traffic - No support



# Survey: 28 votes for connecting Center/Park or a speed table



Make a safer connection between Barrie Park and Barrie Center	65.4%	<div><div></div></div>	17
Add a speed table to calm traffic	42.3%	<div><div></div></div>	11
Don't make any changes	3.9%	<div><div></div></div>	1
Other	11.5%	<div><div></div></div>	3
Total			26

## Statistics

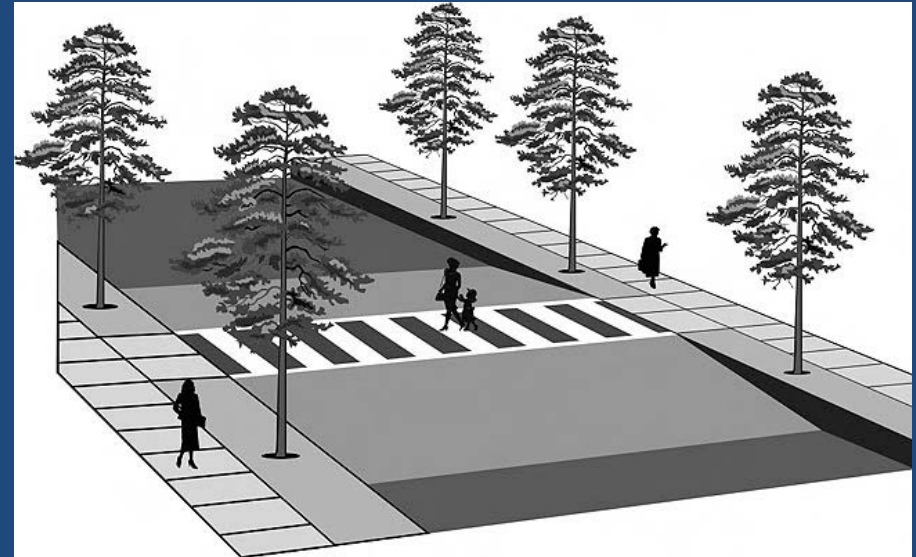
Total Responses 26

## Responses "Other"

	Count
Left Blank	27
IDOT impacts concern me	1
Keep the sidewalks clear on Garfield	1
extend the drop-off area on both sides of intersection i.e. no parking and move staff vehicles to back of building	1



Speed Table most popular and has least impact on area traffic  
Increasing to total length of Lombard ( making it into a woonerf)  
would increase pedestrian feel but would be expensive







# The Center:

Renovated, popular and well used, pre/after school, indoor play, meetings  
Community members said there was too much concrete and not enough planting







# West Side of Center Underused space



Barrie Park - Park District of Oak Park





# West Side of Center

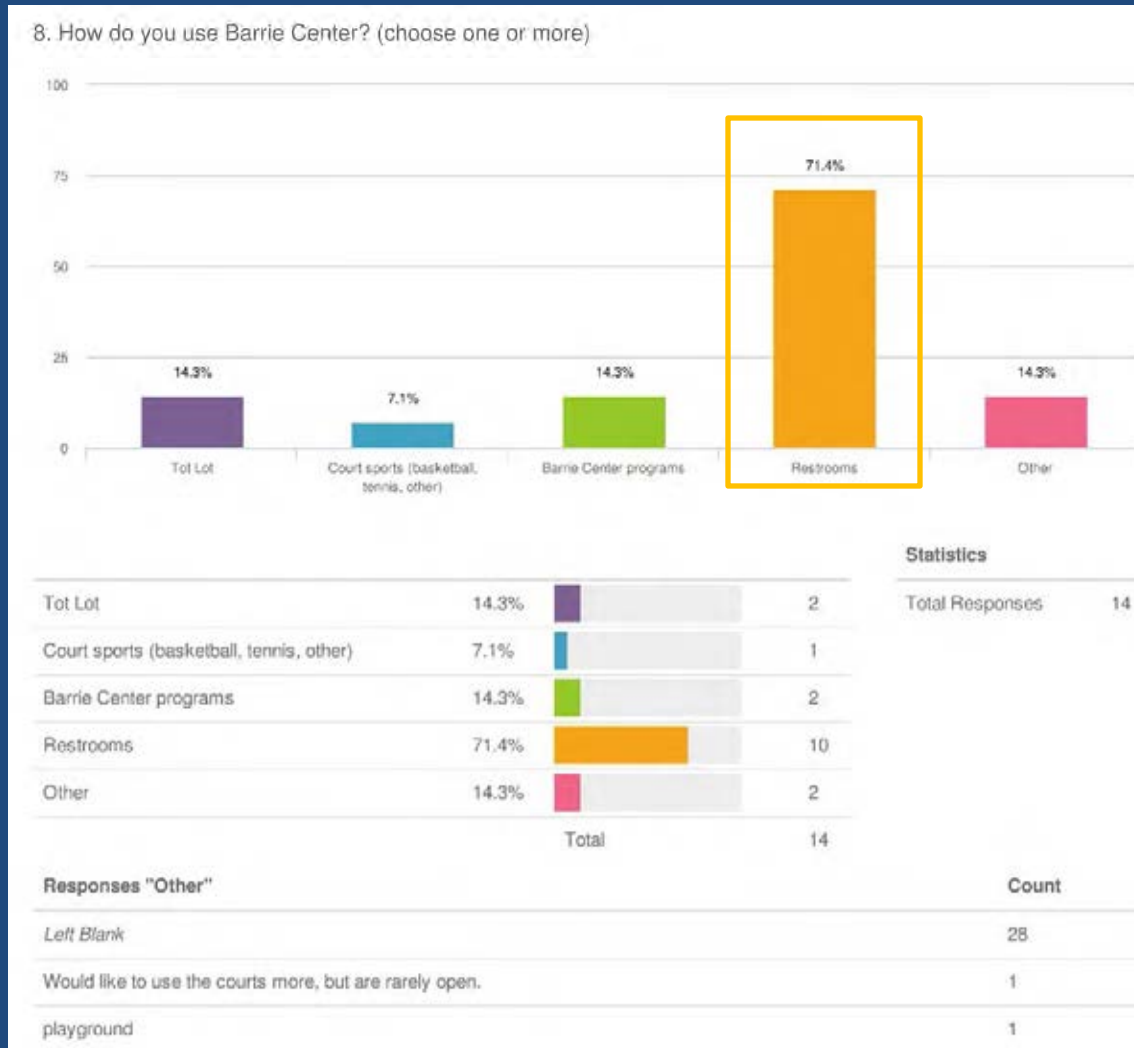
## Drainage and damp issues





# The Center

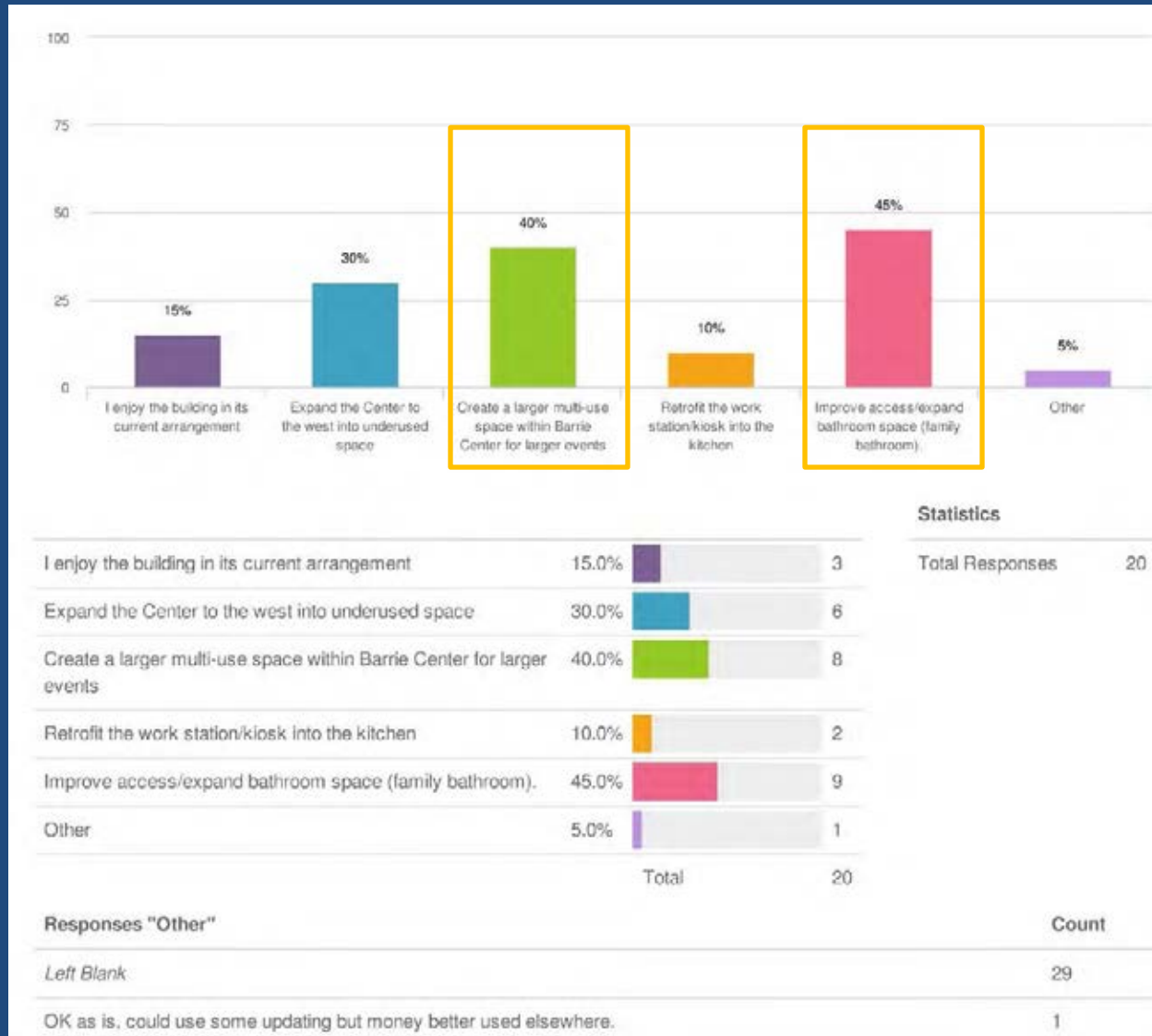
## Survey: Restrooms most used





# The Center

## Survey: Family bathrooms and larger multi-use space





# Suggestion for Barrie Center Focus Groups, Survey and Last Meeting



1. Create better or expand bathroom space/ access (family bathroom)
2. Create larger multi-use space within Barrie Center for larger events
3. Retrofit work station into kitchen
4. Parking for Staff - garage at rear

This would mean remodeling the Center and potentially expanding the Center to the west into underused space.





# View of tot lot and entry plaza at Barrie Center

“A lot of concrete, plantings fry, gets very hot”



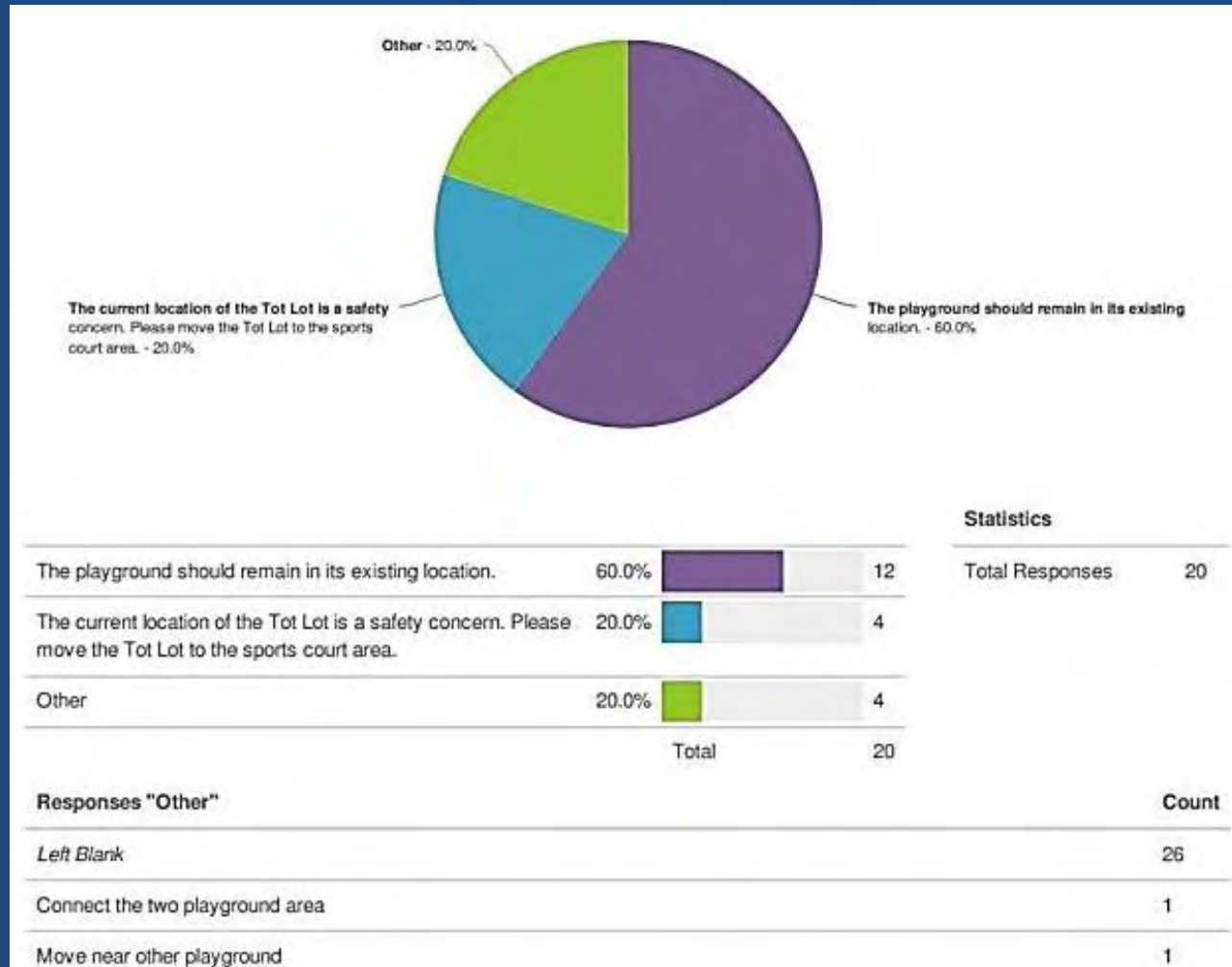


View of tot lot:

One resident commented “remove the cliff” for tots



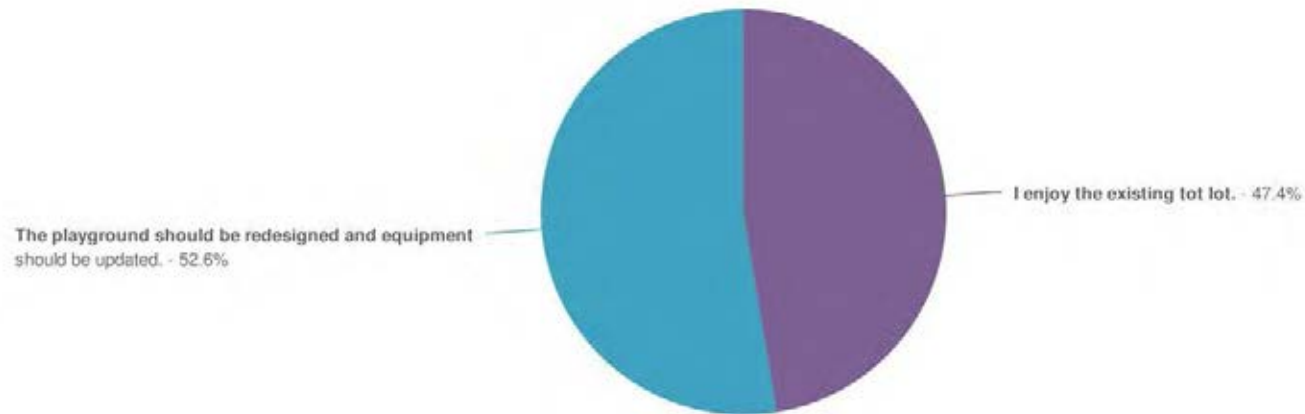
# Suggestions for Tot Lot at Barrie from Survey: Playground should remain in current location but is a safety concern



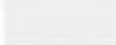




# Suggestions for Tot Lot at Barrie from Survey: Close call on updating equipment 52.6% to 47.4%. We will have to in the future so lets plan for it

14. Pick which choice you prefer from the following regarding the Barrie Center Tot Lot:



				Statistics	
I enjoy the existing tot lot.	47.4%		9	Total Responses	19
The playground should be redesigned and equipment should be updated.	52.6%		10		
Other	0.0%		0		
Total			19		
Responses "Other"				Count	
Left Blank			30		





# Main suggestions for Tot Lot at Barrie Center

## Most Popular suggestions from Survey and Last Meeting

1. Tot Lot should stay where it is. Community symbol, kids wait for parents on CTA, enjoyable to walk by, part of Center.
2. Improve Safety; issues at corner playground, busy intersection
3. Redesign, update and make friendlier, too much concrete add plantings
4. Add Peter Pan mural to pumping station wall to reflect “magic of James Barrie.”
5. Add water feature
6. Add picnic pavilion (maybe shade structure)
7. Apply green solutions: various recommendations for the Center and overall space, includes native planting, drainage, solar panels etc.



# Main suggestions for Tot Lot at Barrie Center

## Will need more space for these features

1. Redesign and update

There will be larger fall zones as codes have changed

2. Add water feature

More space

3. Add picnic pavilion (maybe shade structure)

More Space

4. Green solutions

More Space for planting, detention or capturing runoff



We could have more space  
Residents stated reduce concrete, make area friendlier



Barrie Park - Park District of Oak Park

Issues: Ramp splits area into segments  
It runs parallel with sidewalk





Issues: Ramp splits area into segments  
Large areas of green space separated by paths





Issues: Ramp splits area into segments  
Large areas of green space separated by paths



Barrie Park - Park District of Oak Park

# Issues: Large Areas of Concrete







# Examples of Ramps and Landscape

Interesting example but we would need more space



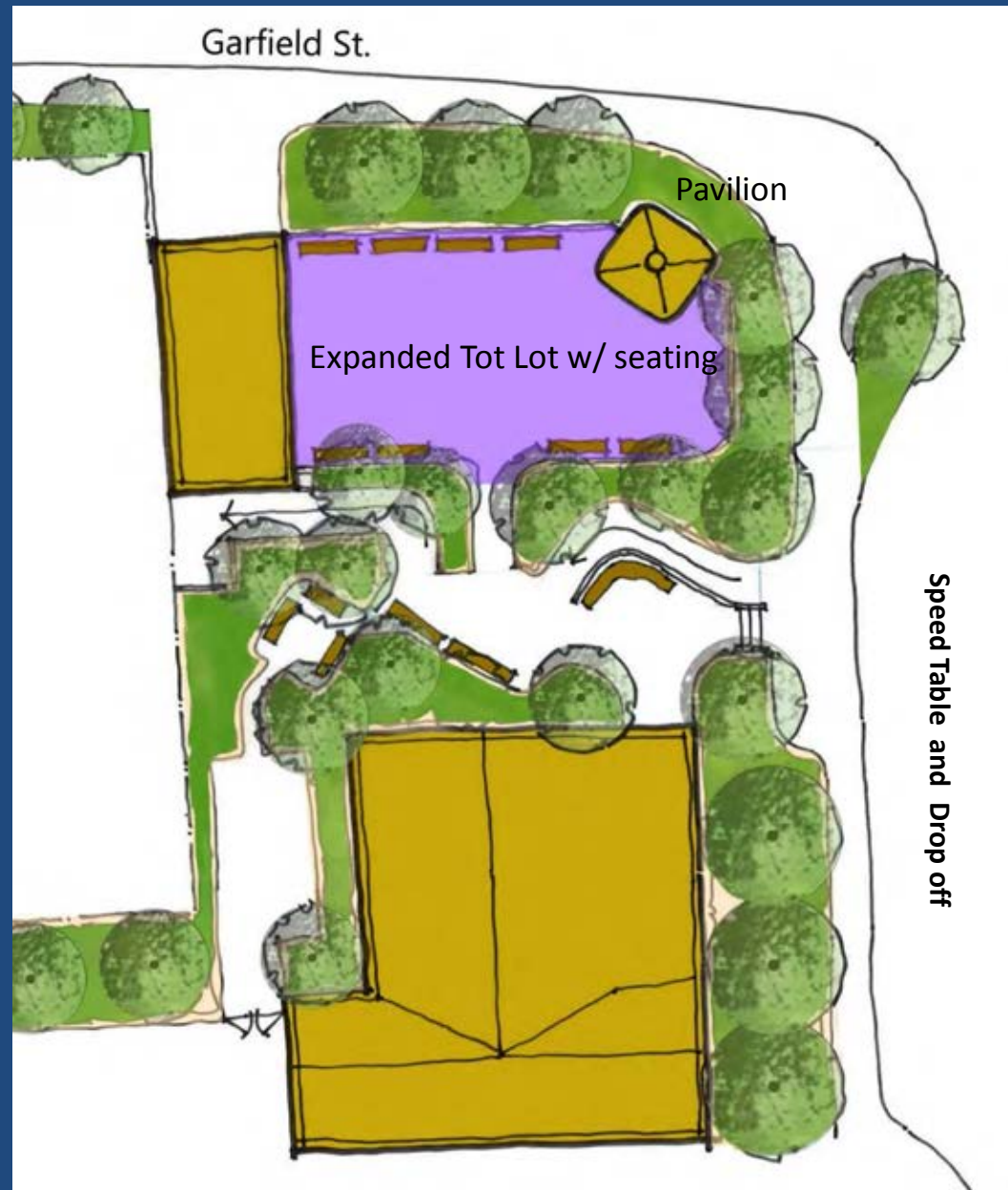




Ramp becomes a place  
But we need space to do something like this

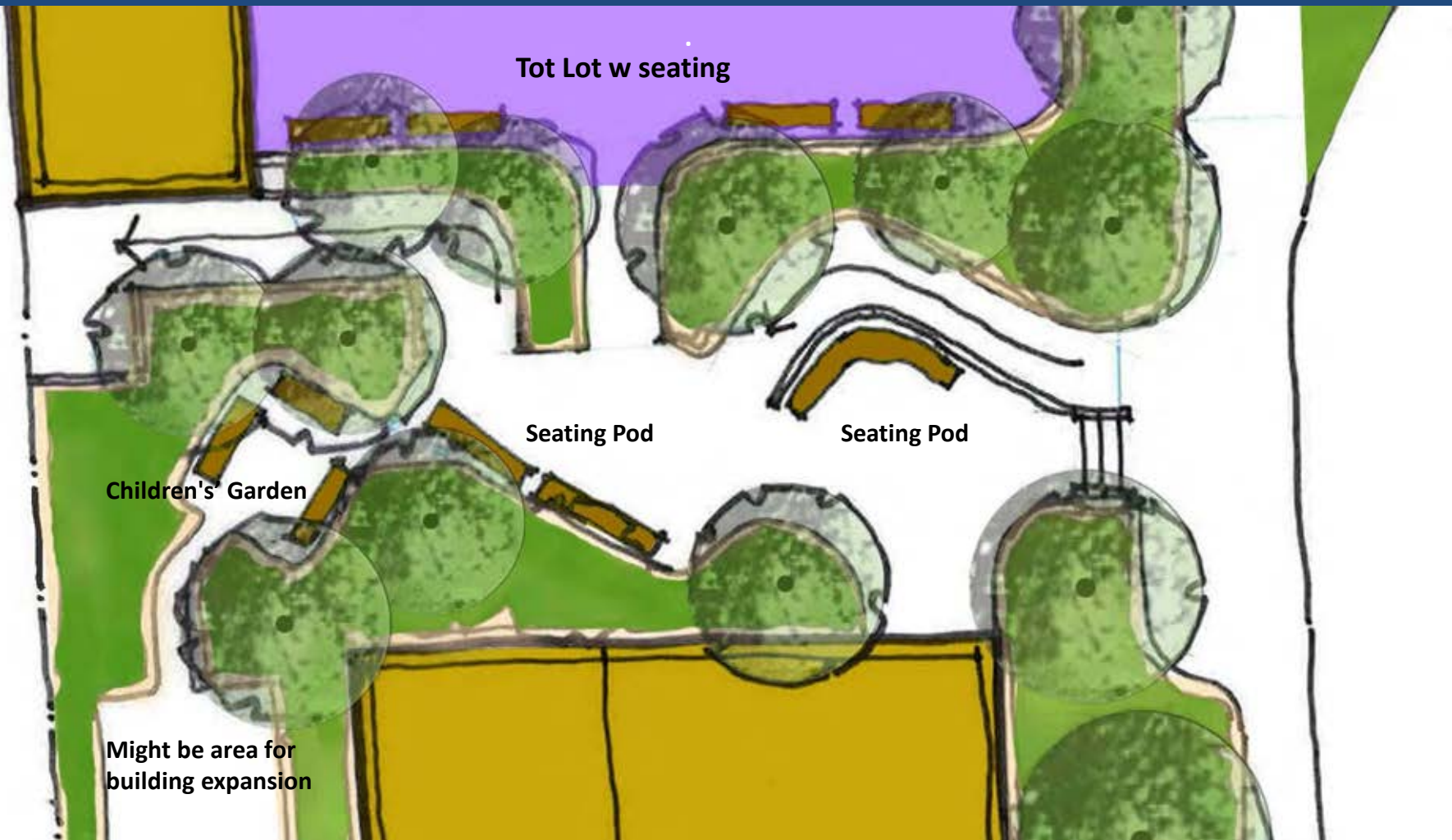


# Scheme 1



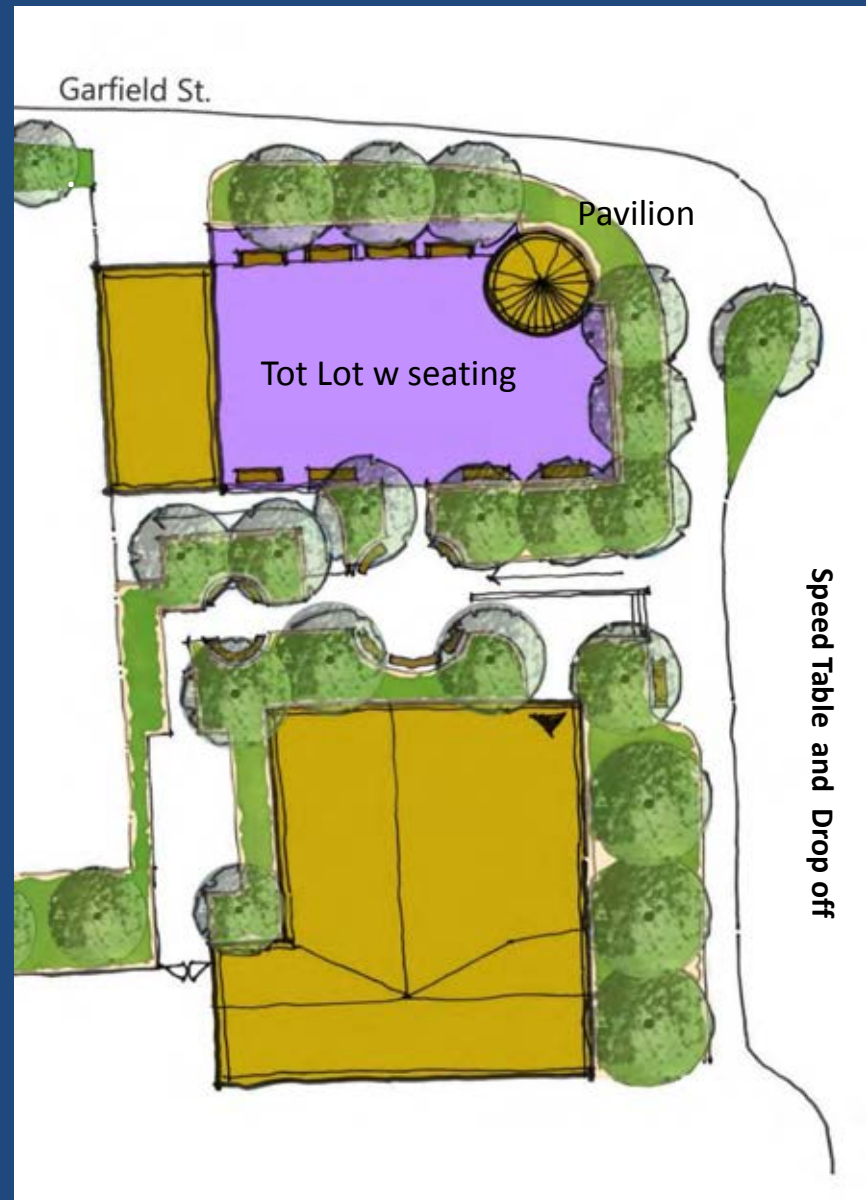
# Scheme 1

Enlarged planting areas, 3 different seating pods, space for garden





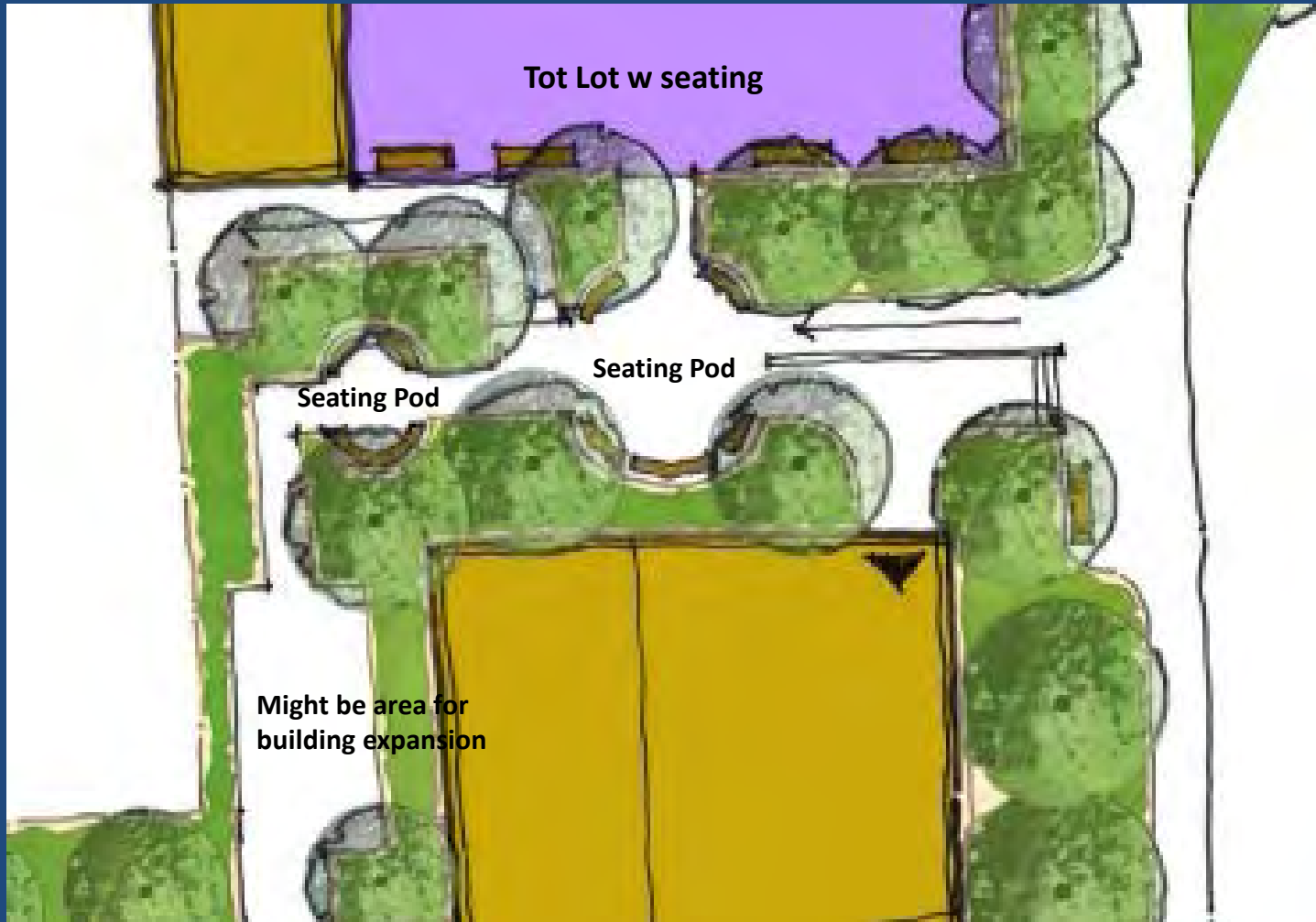
## Scheme 2



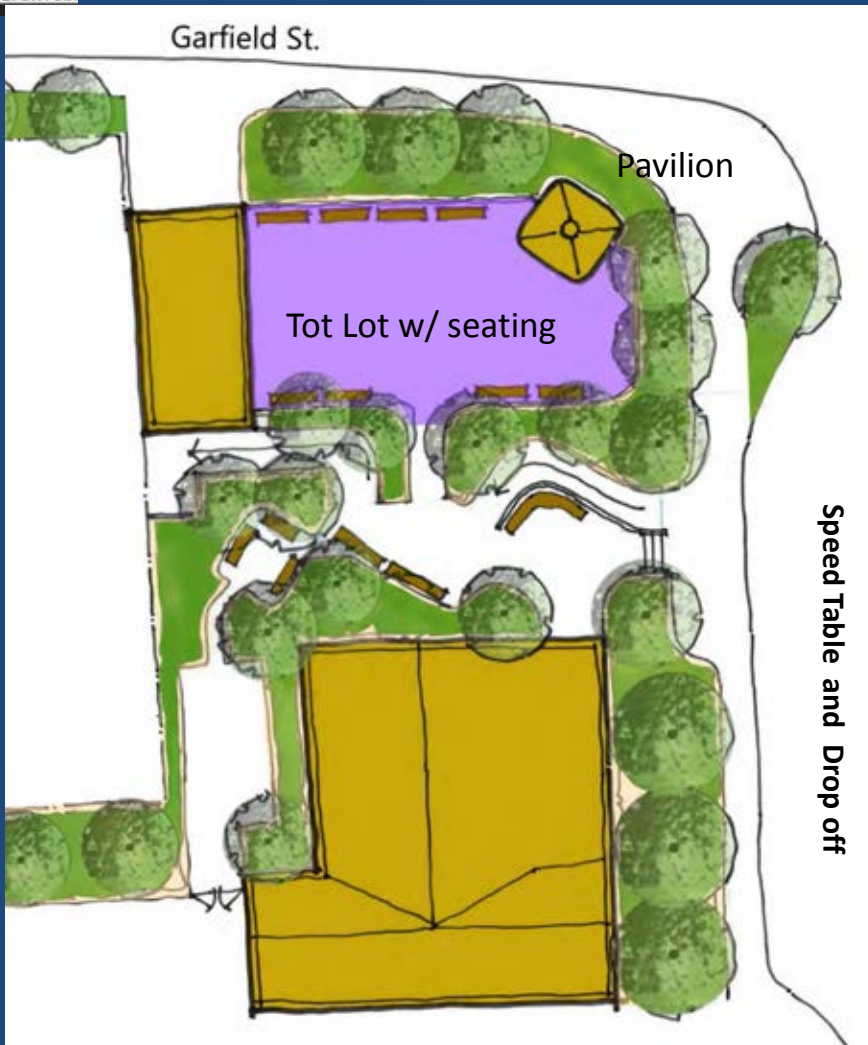


## Scheme 2

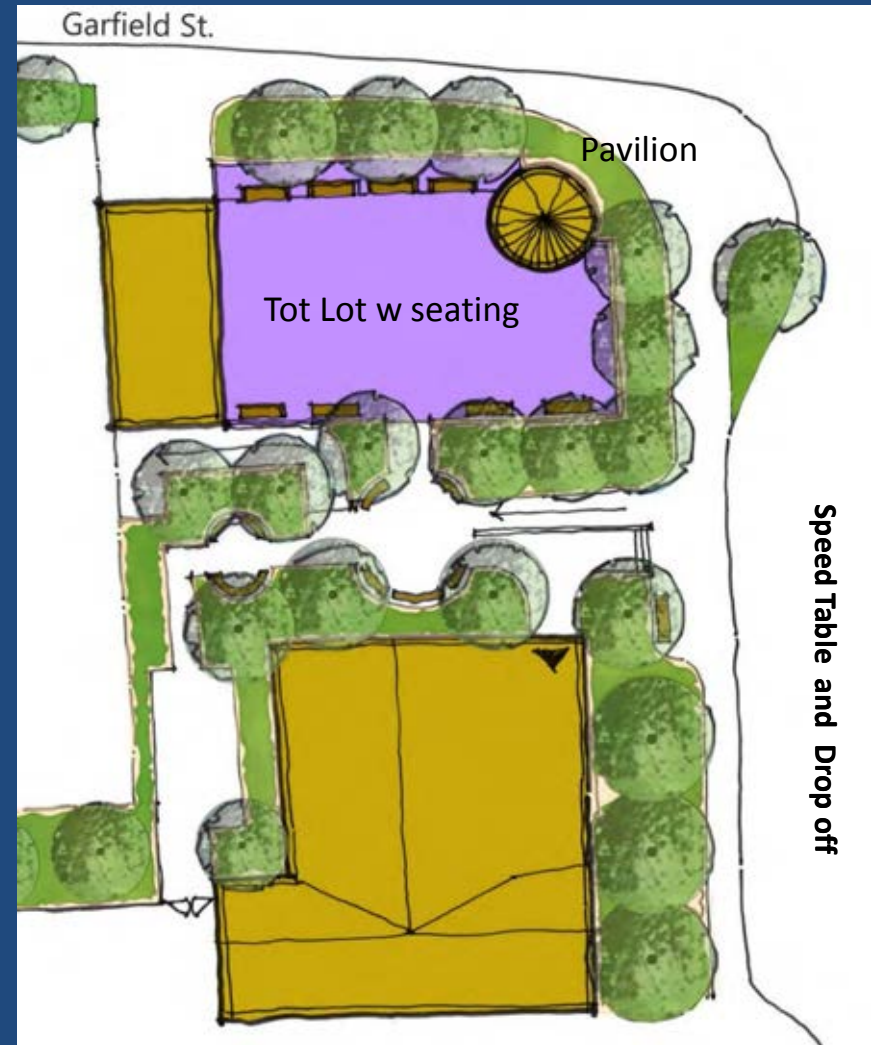
Similar but more straight lined



Scheme 1



Scheme 2





# The Top of Reservoir



# The Top of Reservoir: Existing multi-use space

Volley ball, 2 Half Courts, 2 Tennis Courts, 143 ft x 123 ft







# Surface of Reservoir

Plastic tiles people say are slippery and “like cheese graters” on a concrete screed that has broken over the years.



# Call for roofing Top of Reservoir to make it useable year-round



Issues: What Village will allow, everything will have to be demountable, structure and safety of reservoir, access to the reservoir structure, height of roof, shielding neighbors





## Potential Roof Schemes:

Very large span, this is half of space 143 ft x 123 ft (17,589 sq ft)



Barrie Park - Park District of Oak Park



# Comments from Village Engineer

- The surface could be levelled using a Bridge Topping Compound similar to Latex infused hydro-concrete
- It is poured in layers and can be levelled
- Then another surface sealant on top
- Runoff to surface flow into a gutter and away from the Reservoir
- Roof structure: Cost, interaction with reservoir foundations





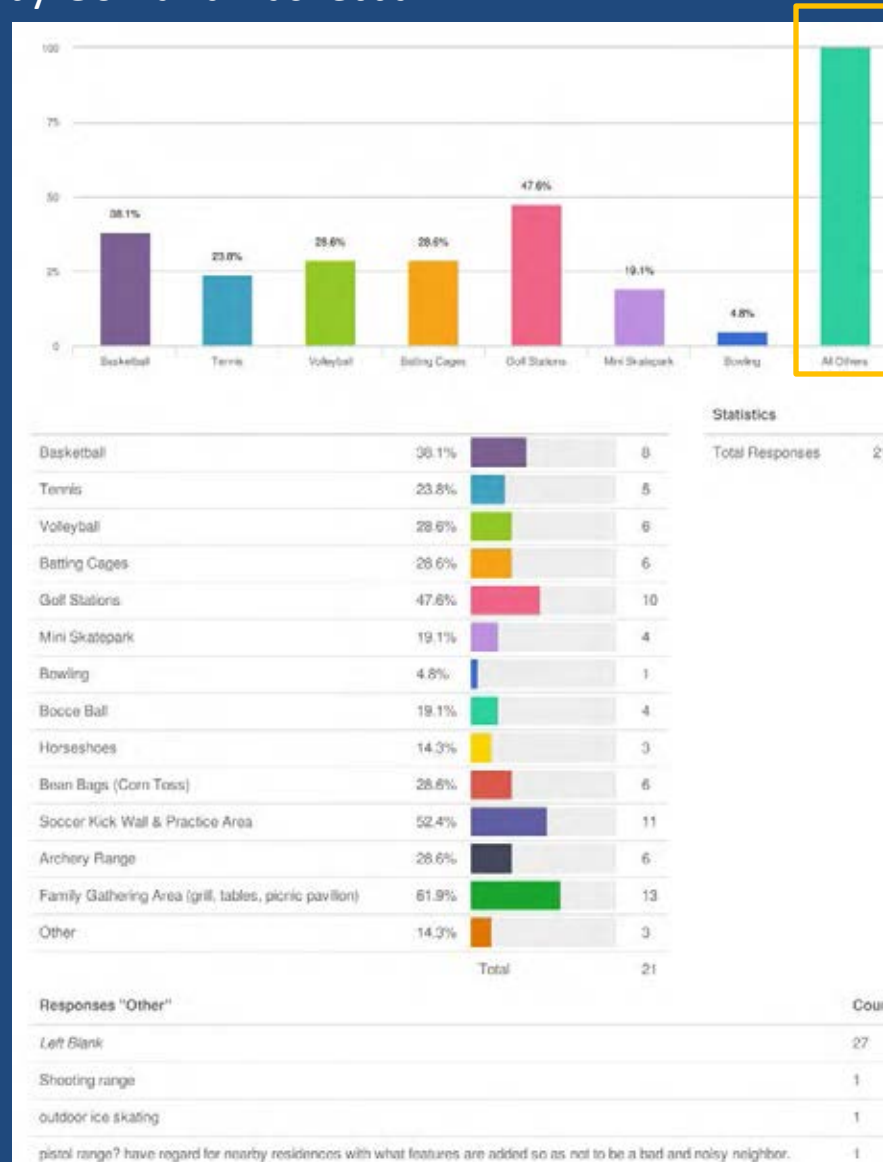
# Discussion with Terra Engineering

- The reservoir structure is designed for 350 lbs. per square foot  
Or 6 tons per 42 square foot
- It will take the weight of any of the uses that have been proposed
- Only concerns with suggested uses are:
  - Sand volley ball & Outdoor Ice Skating
  - If 18 inches to 2 ft. of sand or similar material gets wet and doesn't drain could lead to structural issues



# Suggestion for Top of Reservoir from Survey

1. Pavilion/Rental Space for family gatherings, films, grilling, etc.
2. Followed by Golf and Basketball





## Survey and Last Meeting in order

1. Pavilion/Rental Space for family gatherings, films, grilling,
2. Golf
3. Basketball
4. Soccer kick-wall
5. Batting Cages, Bean Bags, (Volley Ball) and Archery
6. Tennis
7. Mini Skate Park and Bocce Ball
8. Horseshoes
9. Playgrounds Tot Lot and for older children with chess tables, picnic tables, etc.

Other: An Aerarium, a gym without walls, Community Gardens, Bowling, Outdoor Ice Skating, Shooting Range, Pistol Range



# Suggestion for Top of Reservoir from Survey

Archery , Shooting Range (noise), Pistol Range (noise),  
Might be problematic mixed with playgrounds and neighbors  
Sand Volley Ball may be a structural issue



“Oh really”





# Suggestion for Top of Reservoir

## These uses could “pop up”/fit in multi-use space:

- Bean Bags, Horseshoes - pop up when needed
- Mini Skate Park could be pop up
- Golf, driving range, golf clinic - pop up
- Bowling - pop up

Items could be rotated but storage is an issue

## Items that take larger space but could be used when needed

- Basketball, back board at ends of space or temporary
- Tennis, nets could be set up when needed (not so easy)
- Soccer kick-wall could be along a side of multi-use space



# Suggestion for Top of Reservoir

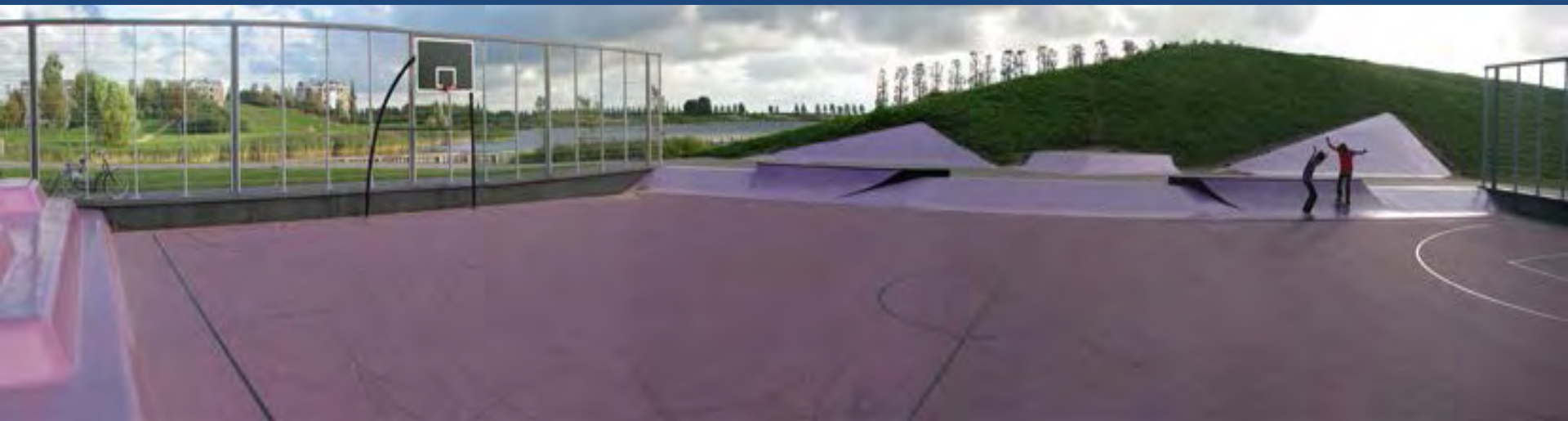
## Remaining main items

1. Rental Space for parties, films, grilling
2. Batting Cages
3. Bocce Ball (could have similar issues to sand volley ball)
4. Playgrounds Tot Lot and for older children with chess tables, picnic tables, etc.
5. A gym without walls
6. Community Gardens (could be elevated movable beds)



# Potential Use for Top of Reservoir

Example: Skate (doubles as seating and storage) and Basketball





# Potential Use for Top of Reservoir Golf Clinic



Barrie Park - Park District of Oak Park



# Potential Roof Schemes: Elevated movable beds



For Active Adults and the Disabled



# Potential Roof Schemes:

Roof should not dominate surrounding homes



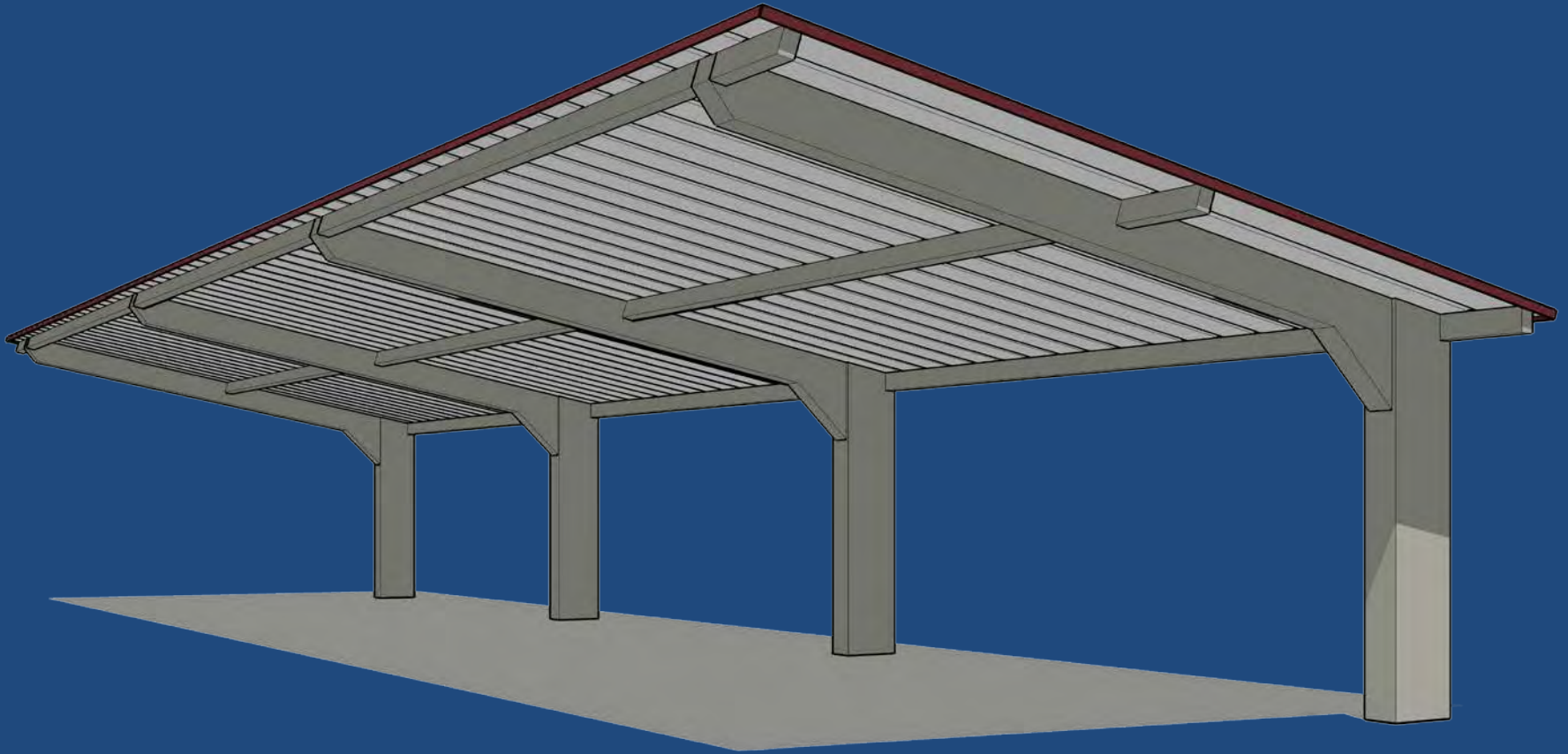
Barrie Park - Park District of Oak Park





# Potential Roof Schemes: Cantilevered Roof

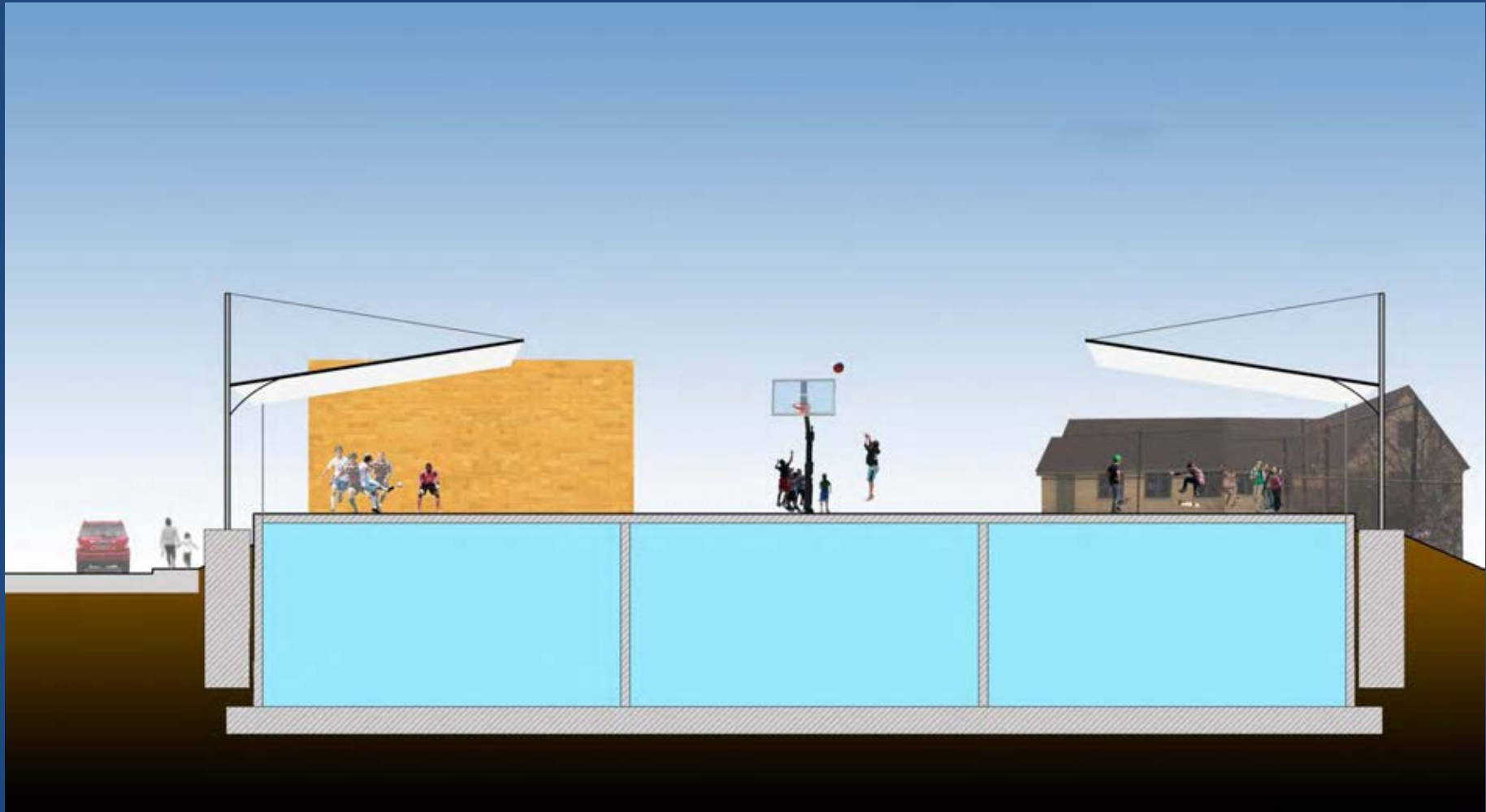
Has to have foundations outside of reservoir and reach out over the reservoir





# Potential Roof Schemes:

## Tension structure/mono pitch cantilever



← 143 feet →

Barrie Park - Park District of Oak Park



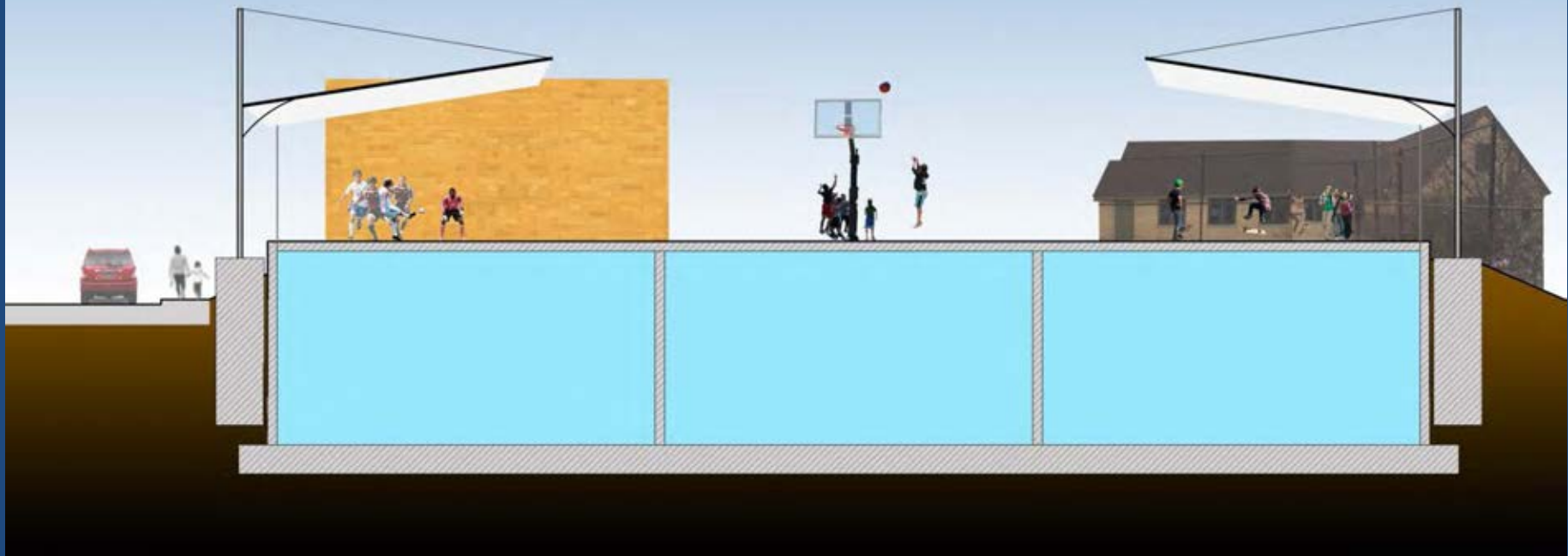
# Potential Roof Schemes:

## Tension structure/mono pitch cantilever

Bean Bags, Horseshoes -  
temporary take out  
when needed  
Soccer kick-wall  
Screen

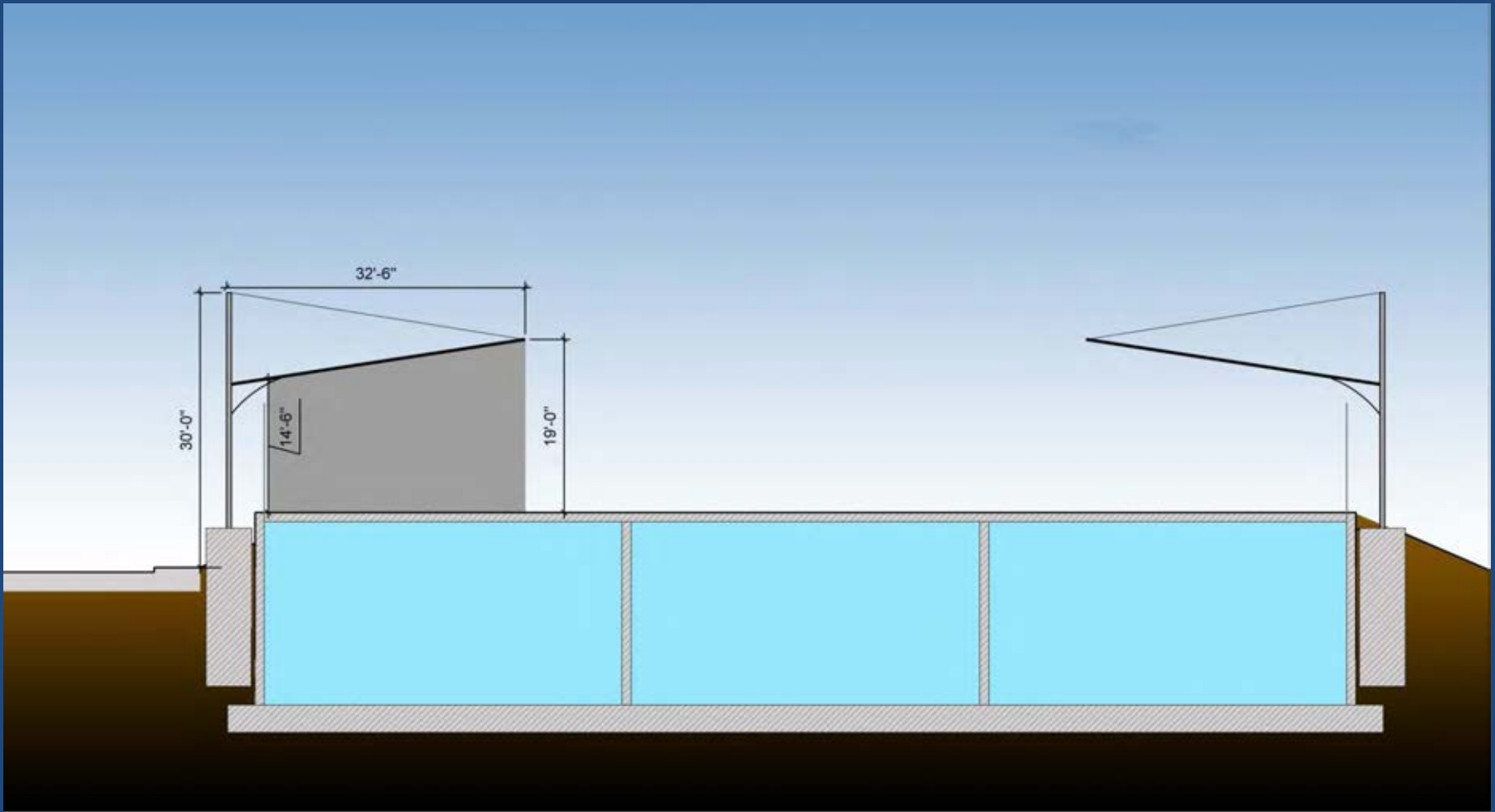
Multi-use Space  
Basketball  
Golf Driving Range  
Community Gardens?

Grilles, games,  
Seating,  
Batting Cages  
Storage

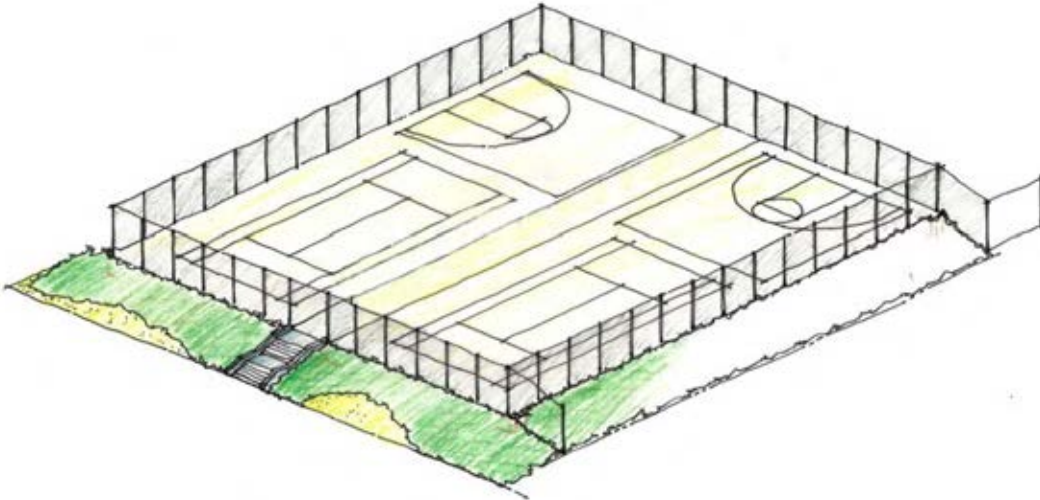


# Potential Roof Schemes:

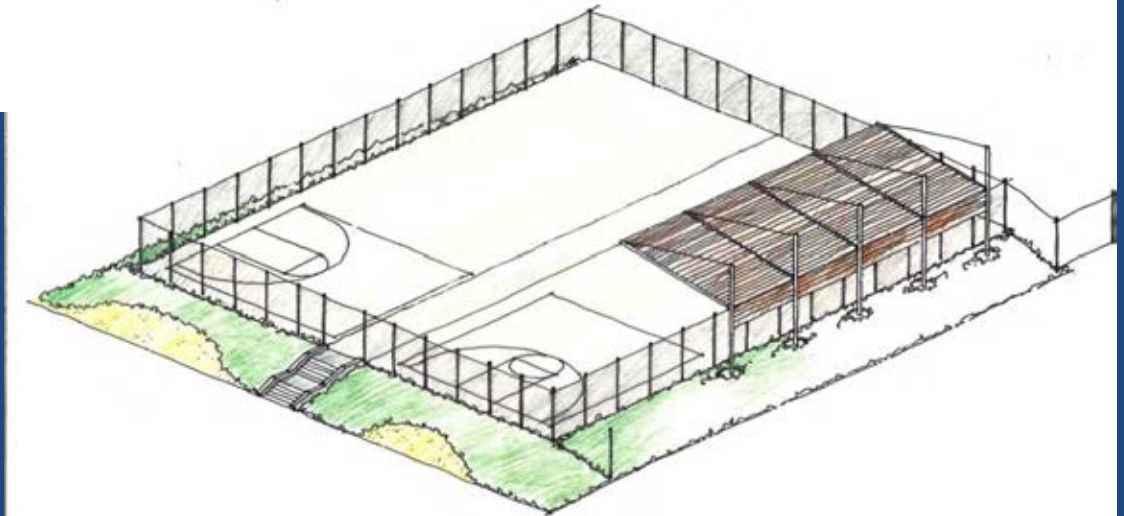
## Tension structure/mono pitch cantilever



# Potential Roof Schemes

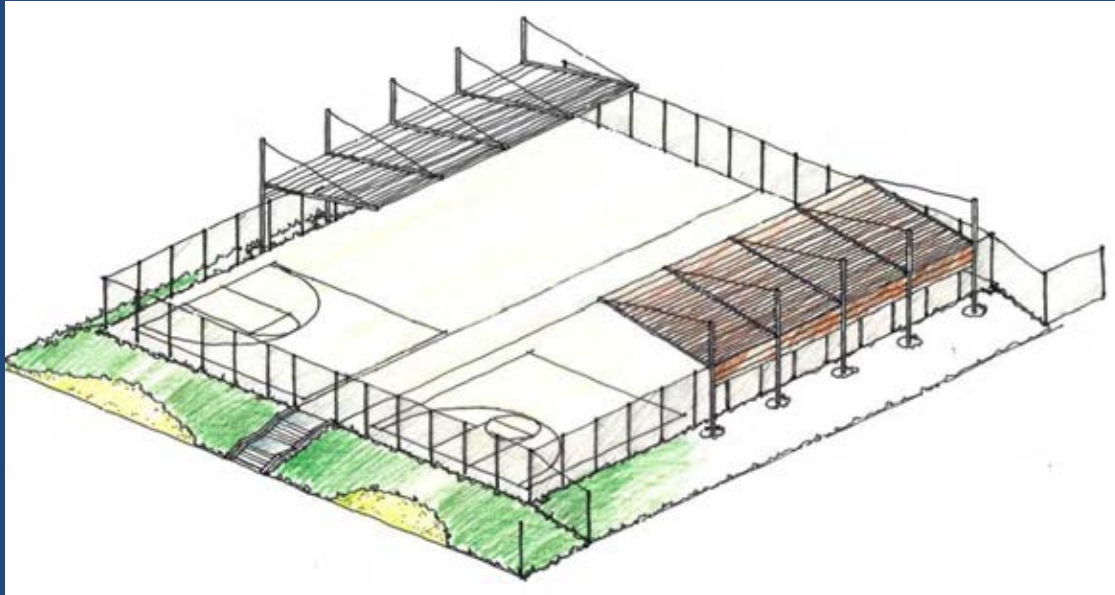


Existing

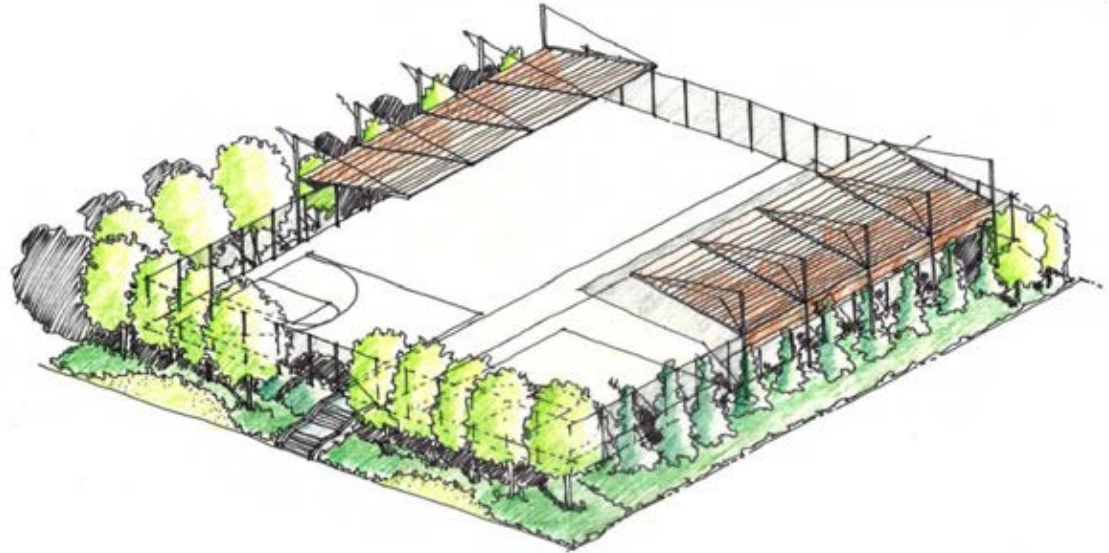


Roof on One Side

# Potential Roof Schemes



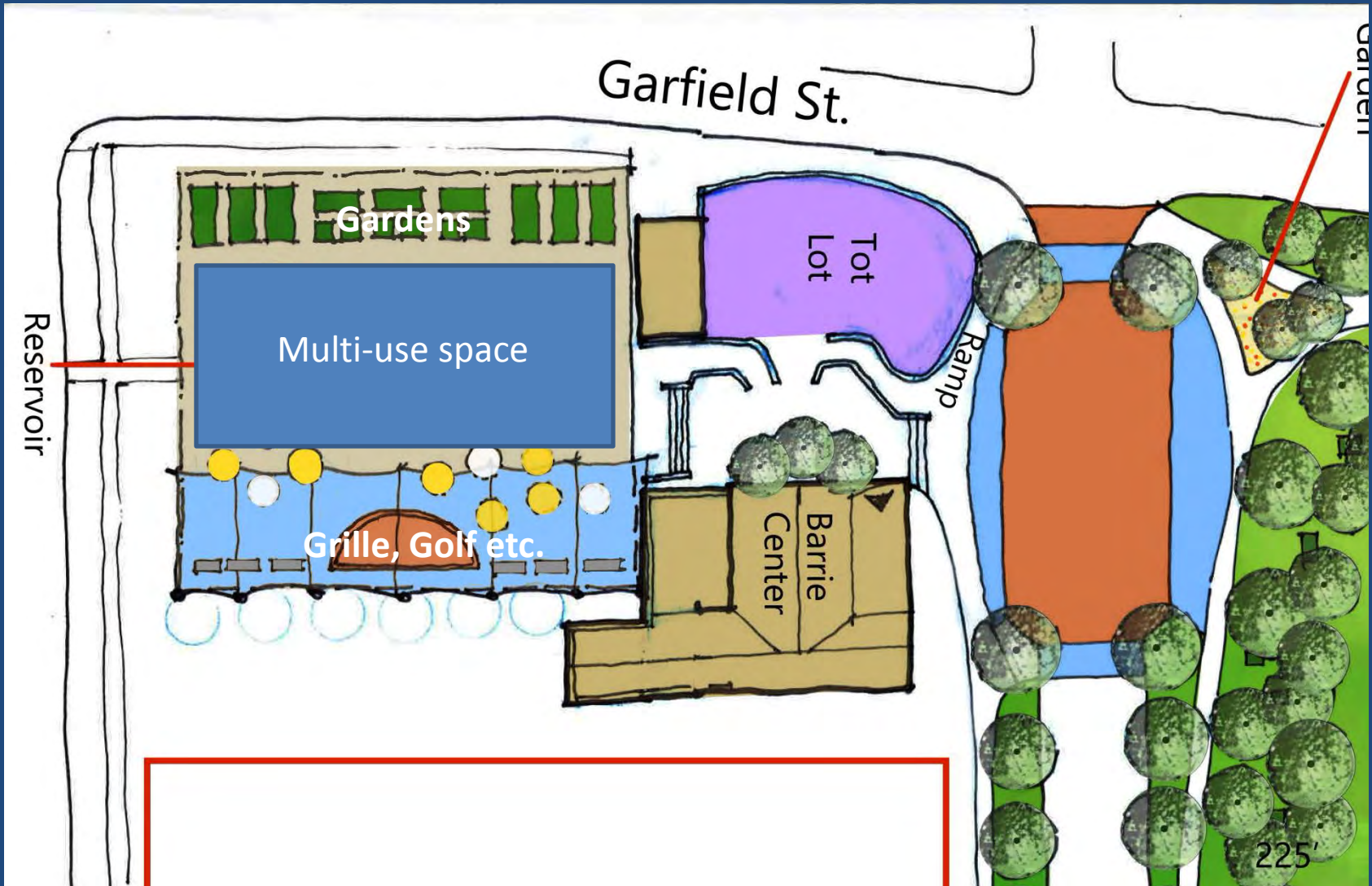
Roof on Two Sides



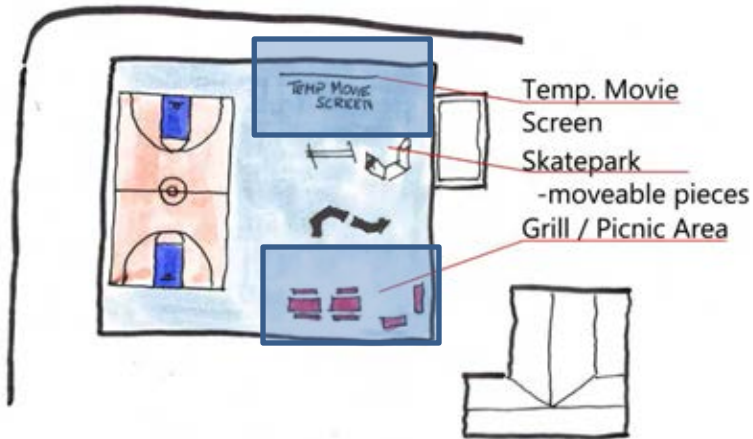
Final with Planting



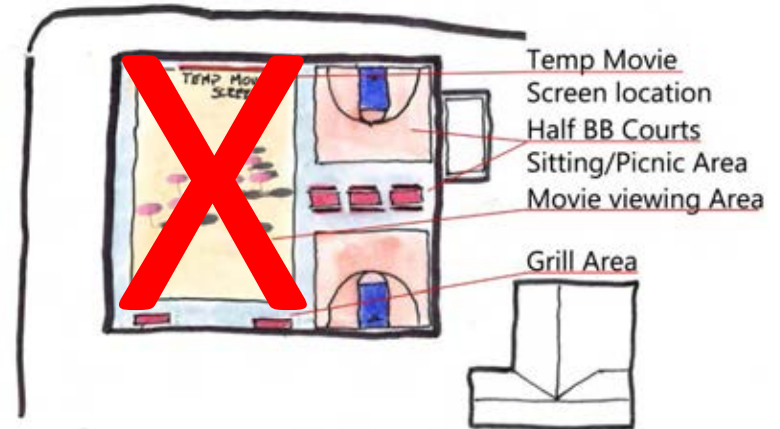
# Schemes: Single side roofed, large multi-use space



# Schemes: 2 single pitched roofs, full basket ball

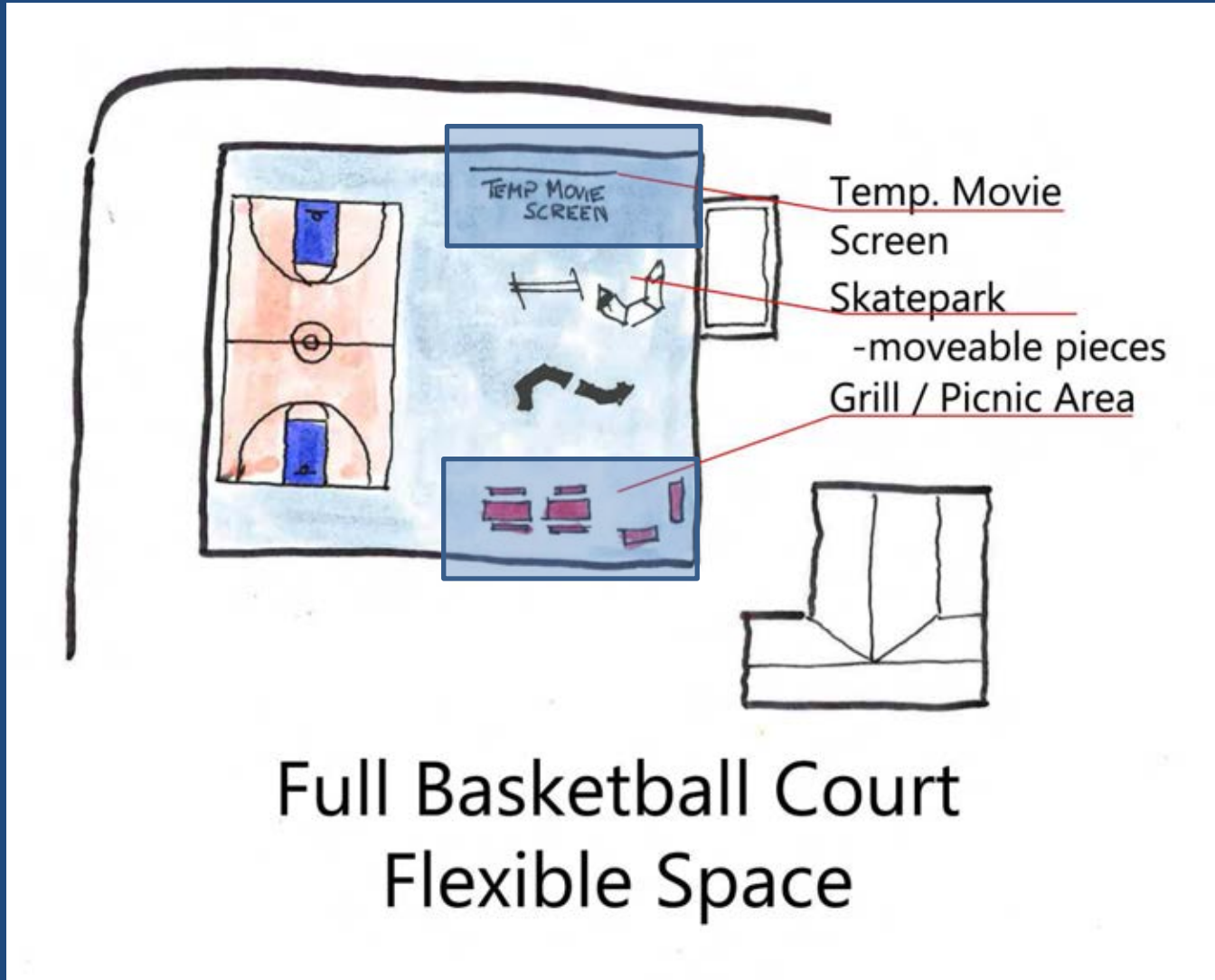


Full Basketball Court  
Flexible Space

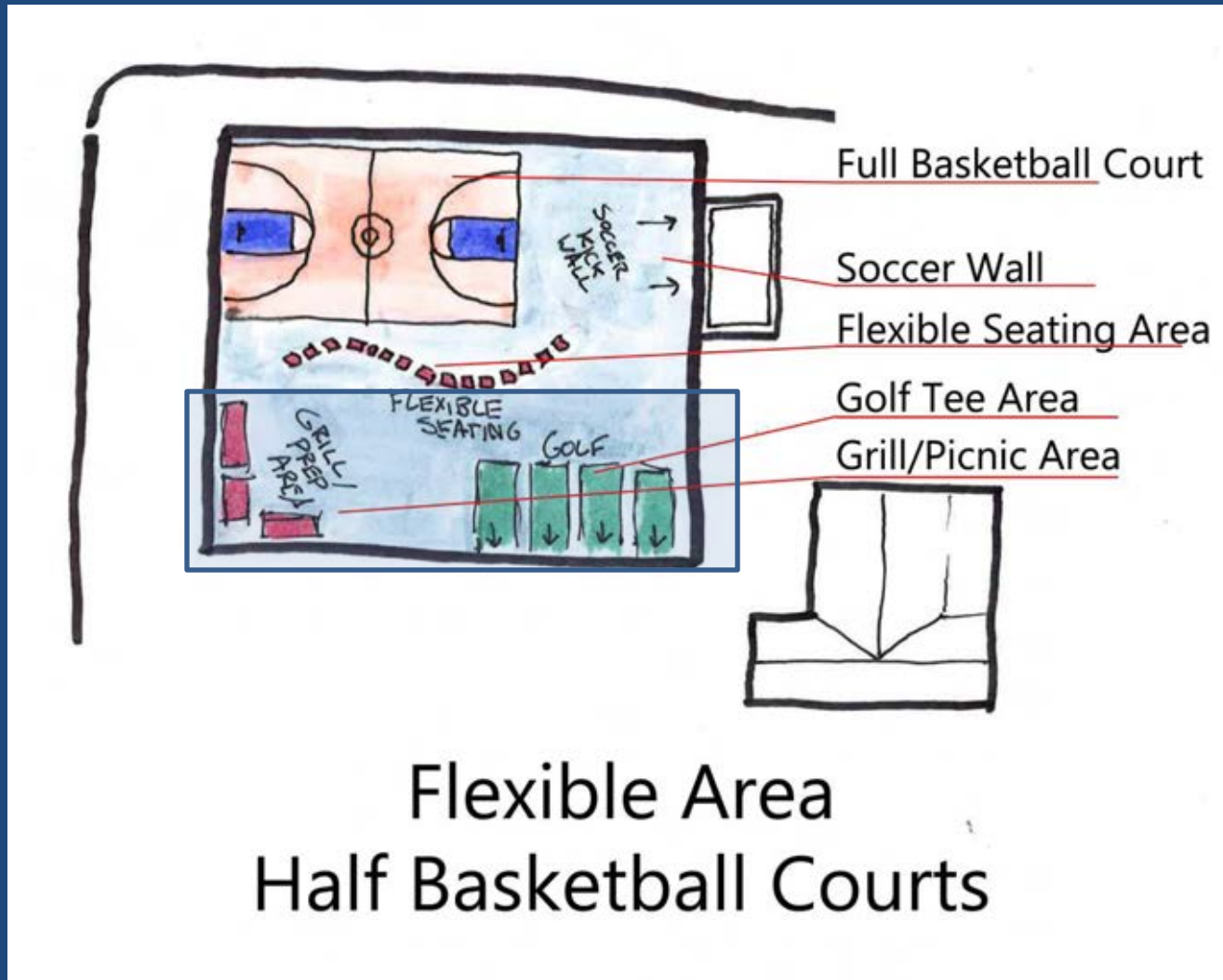


Beach Volleyball  
Half Basketball Courts

# Schemes: 2 single pitched roofs, full basketball

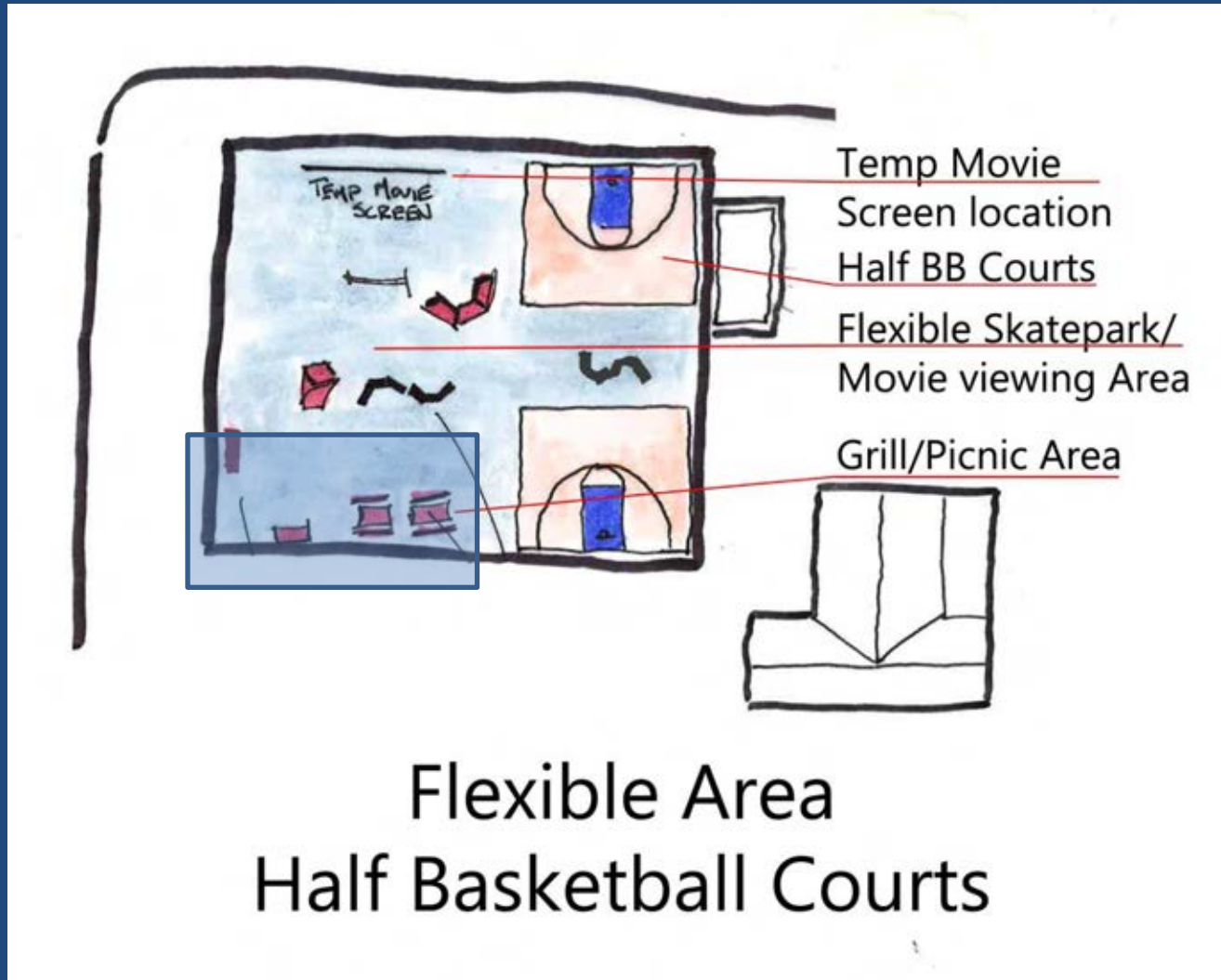


Schemes: One single side roofed, large multi-use space, pumping station acts as soccer wall

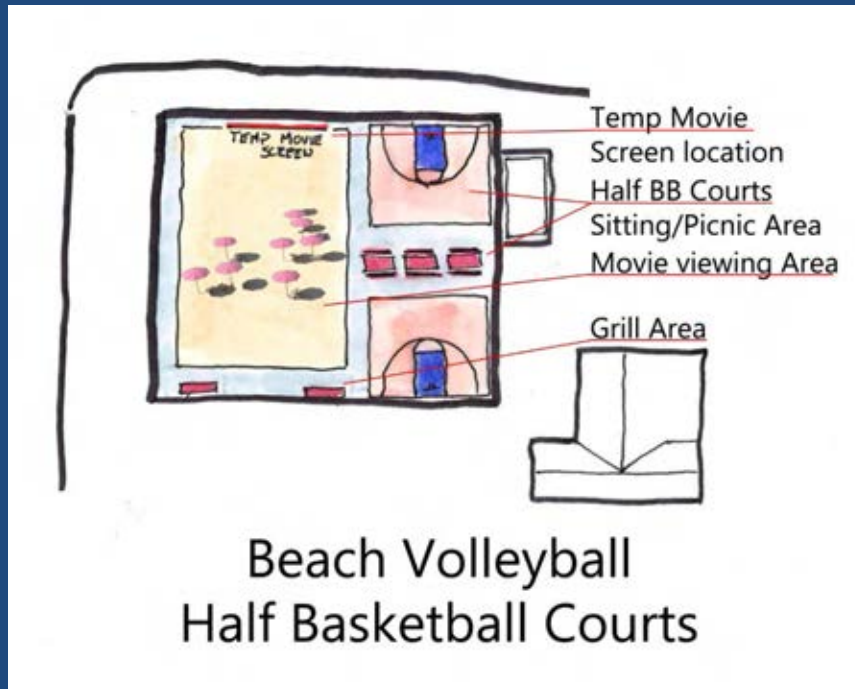




# Schemes: Single side roofed, large multi-use space



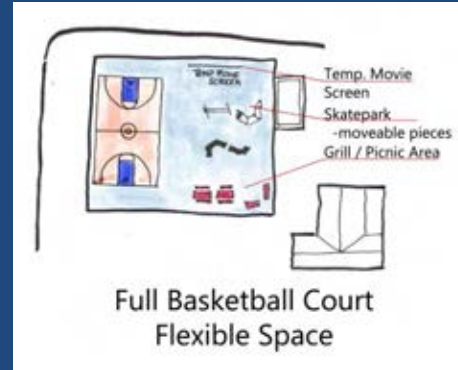
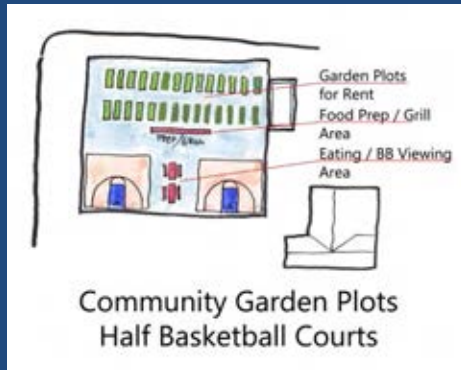
# Schemes: Unfortunately Sand Volley Ball too heavy



Josy wanted a beach



# Schemes: Many many variations







# Entries: Could we make Entrances more Welcoming?

Suggestions include removing walls, limbing up or removing vegetation



NE Corner



NW Corner

Remove the walls and open up views into the park.





# Entries: Yes we can make entryways more welcoming

## Open up the corner, ask people in



We probably will not have so much seating but hopefully you get the idea



Barrie Park - Park District of Oak Park



Entries: Yes we can make entryways more welcoming  
Or a rain garden at the entry, we will need detention



Note:

If we work to solve drainage issues of the field the new MWRD storm water codes will come into play. We will not be able to drain all stormwater to the sewer but detain it on site







Entries: Yes we can make entryways more welcoming  
Or a rain garden at the entry, we will need detention





# Drainage a major issue for all Mounds and grading block drainage, path becomes swale







# Drainage

Water collects in dips and then forms channels through grass





# Drainage

Keep mounds but regrade, add swales and make a feature



Swale and Carex



Demonstration Swale at Sauganash



# Drainage

Keep mounds but regrade, add swales and make a feature



Swale and Carex



Swale and Culvert





# Drainage

North side path in shadow and gets icy

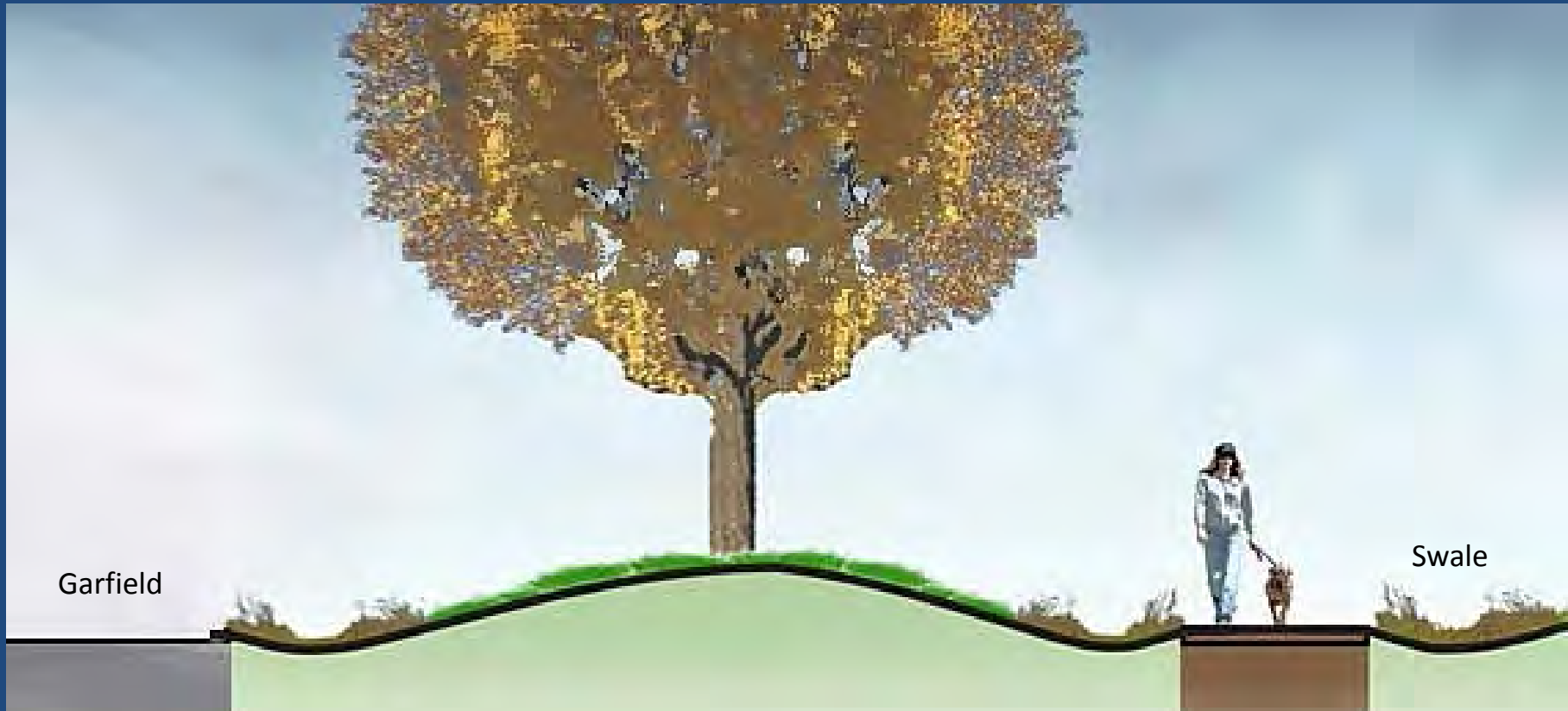






# Drainage

Move North side path into the park and regrade



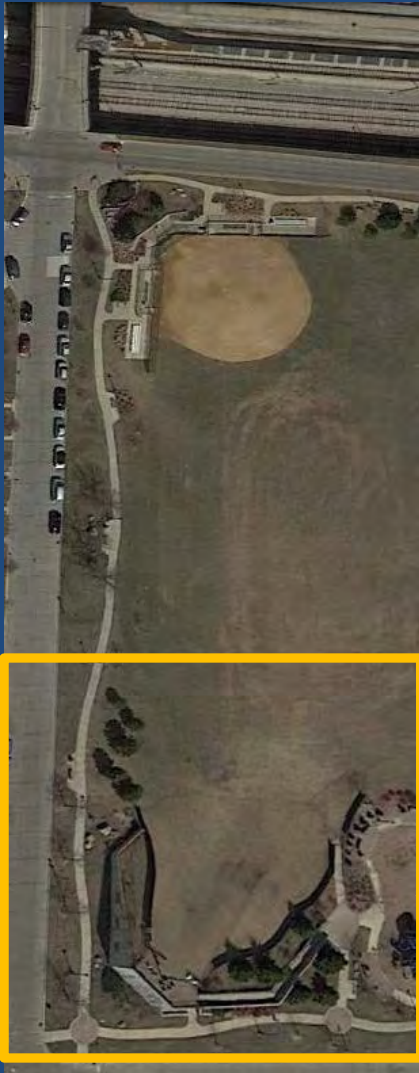


# Sled Hill :

Issues include erosion of Hill and Field, overuse and training of this popular feature



# Sled Hill Issues and Opportunity: From Last Meeting

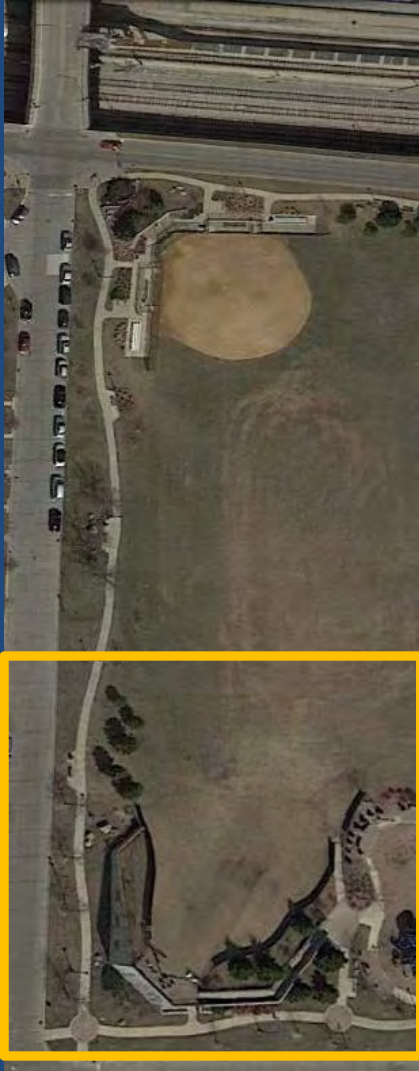


1. “Runners kill the turf in the summer. They get mad if they are stopped.”
2. “Unused section of hill could be used as an exercise stair and exercise course instead. Maybe, then offer a different tread sizing for varying difficulties”
3. “Create fitness stations near hill for people who train on it.”
4. “Create a smaller sled hill for smaller children.”
5. Question: Do people like the idea of a secondary small hill?  
Response : **Yes**
6. Keep fencing at bottom of hill during warm months to prevent wear and tear. (PDOP)

Potential use of artificial ski surface on the hill.



# Sled Hill Suggestions: From Last Meeting



Question :

What do people think about synthetic materials for sled hill?

Response : “it doesn’t seem proven.”

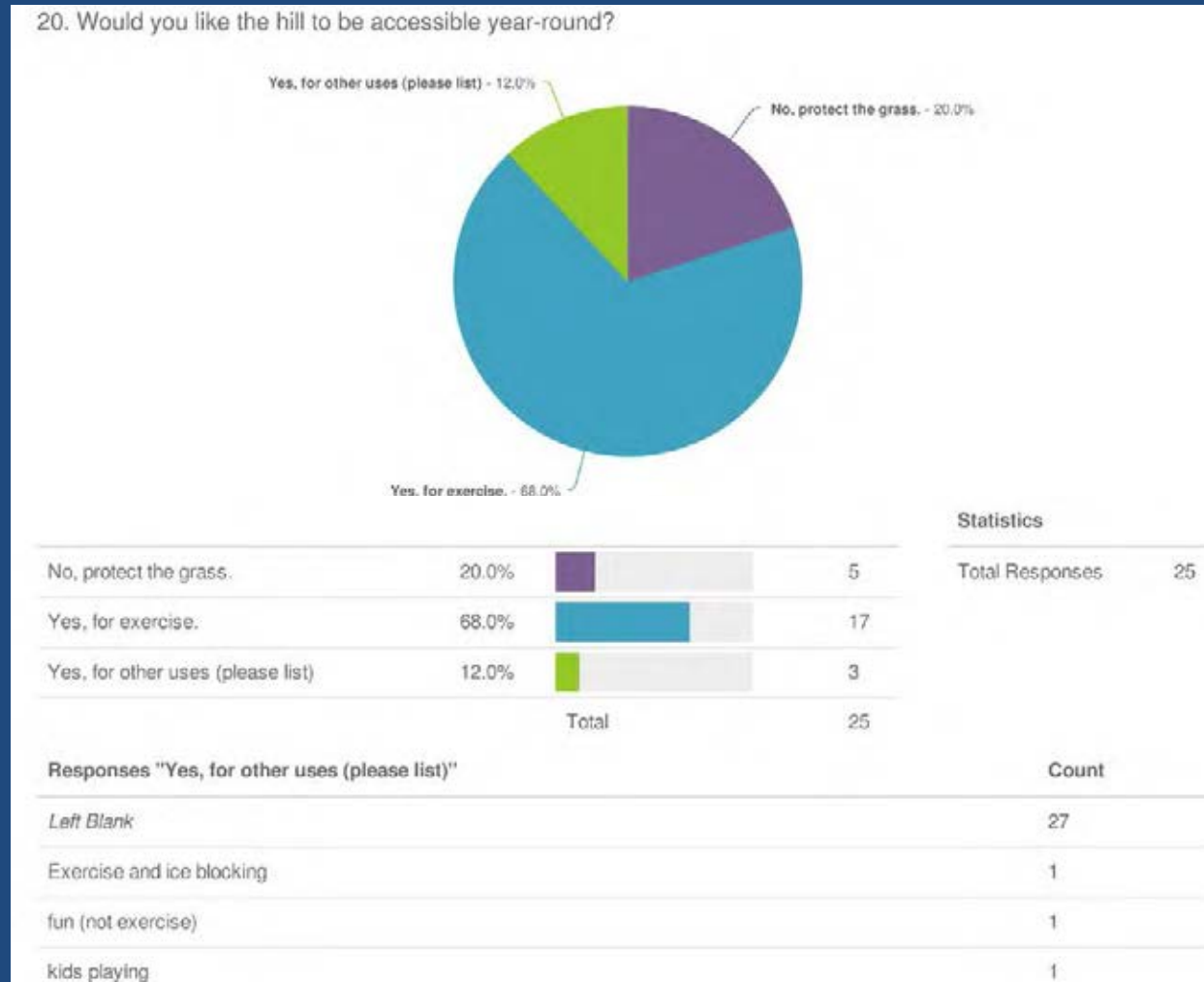
Report by James





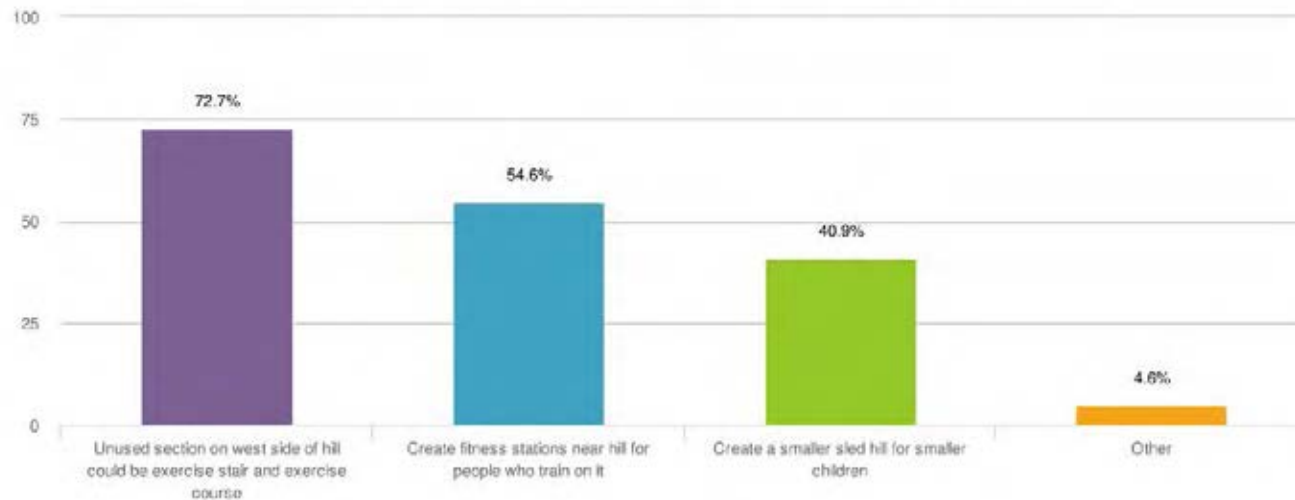
# Survey Sled Hill : Main findings





Year-round exercise 68%, protect the grass, fun and kids play



# Sled Hill : Add exercise stairs and stations and small hill

21. Pick the choice or choices you prefer from the list below regarding changes to the Sled Hill:



Statistics			
Unused section on west side of hill could be exercise stair and exercise course	72.7%		16
Create fitness stations near hill for people who train on it	54.6%		12
Create a smaller sled hill for smaller children	40.9%		9
Other	4.6%		1
Total			22
Responses "Other"			Count
Left Blank			29
Rock climbing handholds/footholds for little kids mounted to west and south facade? Couldn't go too high for safety concerns....or could they!			1



# Sled Hill Issues:

West side add an exercise stair and exercise stations





# Add Exercise Stairs to Hill







## A residents' comments

The erosion of soil from the sled hill needs to be solved regardless of whether natural or artificial turf is used on the soccer field.

Lower the hill 42" allowing a more gradual slope and a better opportunity for maintenance.

Reseed as short grass prairie.

Install a shallow but efficient swale at the base of the sled hill to 'slow' down sleds to discourage them reach onto the soccer field

The exposed wall could be stained, using a veneer stone or softening with upright narrow evergreen materials (i.e. Juniperus Chinensis Spartan, Fairview, Mount Batten or Keteleeri).

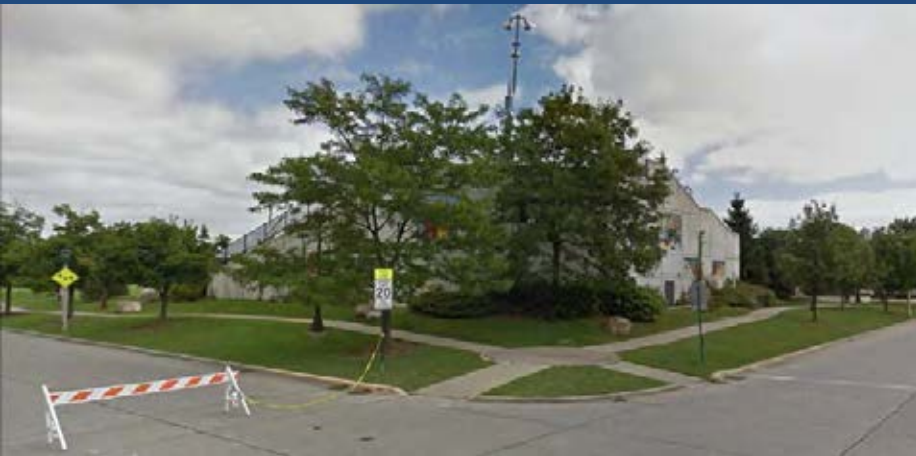




# Southern Entries:

Could we make Entrances more Welcoming?

Long term prepare for the replacement of the play center?



SW Corner



SE Corner

# View of playground:

“Planters block views and use up space”







# Desire Lines around playground

The way people actually use the space not how it was designed



Barrie Park - Park District of Oak Park





# Play Ground

If we have remove planters and have some more space how should we use it?



# Playground:

Rustic Play “Add more boulders like at Carroll”

Please note if we head in this direction the look of the park will change





# Playground: Some concepts

## Rustic Play







# If Rustic Play Ground Furnishings could be different





# Playground: Or similar to Irving and Longfellow?

## Which direction do you want or both?



Barrie Park - Park District of Oak Park



# Play Ground Suggestions Survey and last meeting:

1. Redesign the playground, remove the concrete planters.
2. Improve lines of sight to and from the playground.
4. Add a flex space - Create fitness areas for parents.
6. Add more boulders like at Carroll.
7. Bring playground and ball field (back stop) closer
8. Add multipurpose space for pop-up uses
9. Art mosaics or sculpture to enliven the space
10. **I like mulch, it isn't as hot and rubber surface, you can walk barefoot on it and is a natural material.**  
**However it is not considered by some authorities to be ADA**





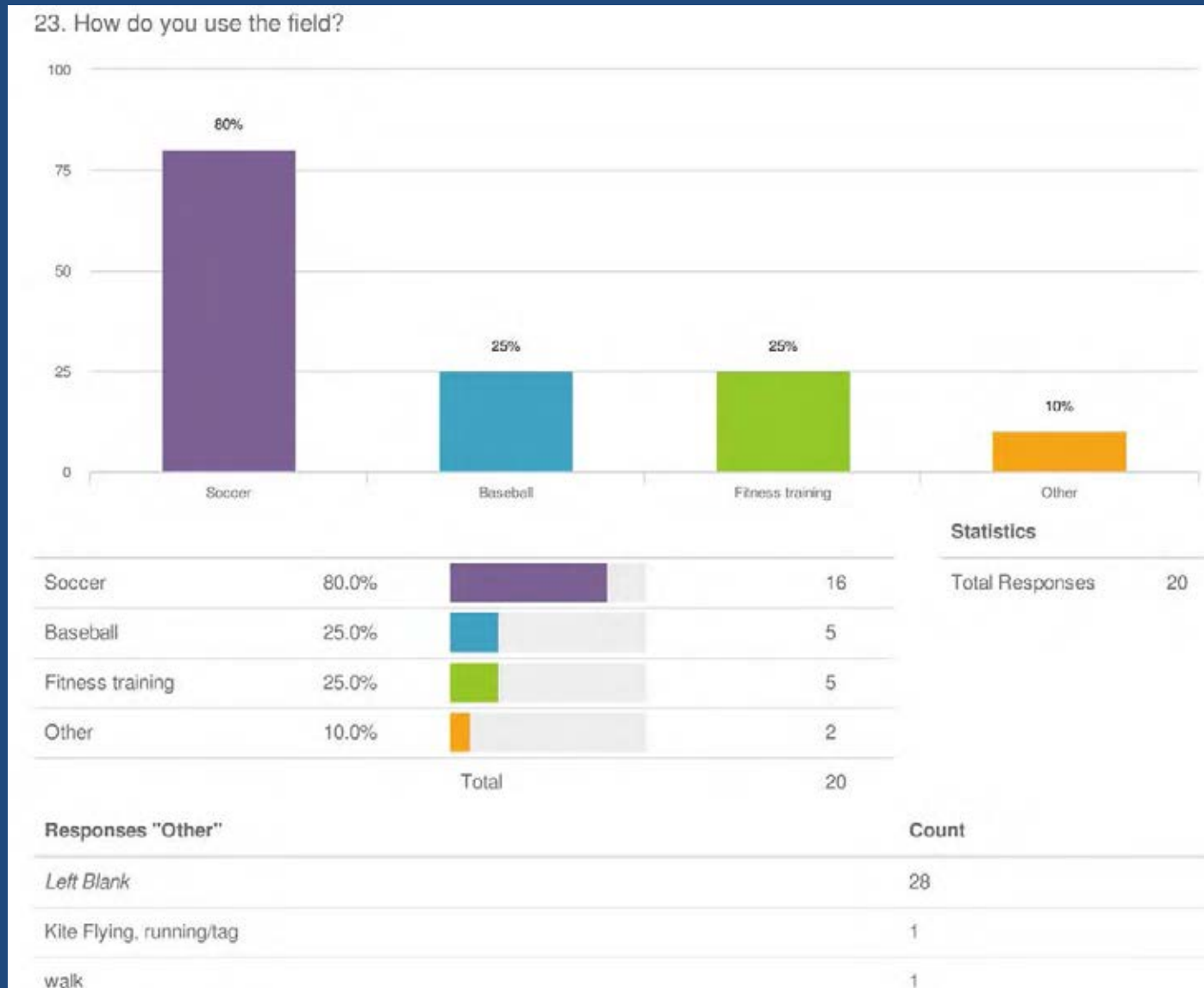
# Field Issues and Opportunities

## From Focus Groups, Meeting and Survey



1. Field is compacted doesn't drain. Fix drainage
2. Artificial turf field v Grass Field
3. "Great need for added soccer /baseball"
4. Batting cages and storage
5. Distance markers and exercise stations sitting areas along the path
6. Planted and Natural areas, "We want gardens and sitting areas"
7. Exploration and Picnic areas
8. Pop-up areas for multiple activities

# Survey: How do you use the field? Soccer 80%

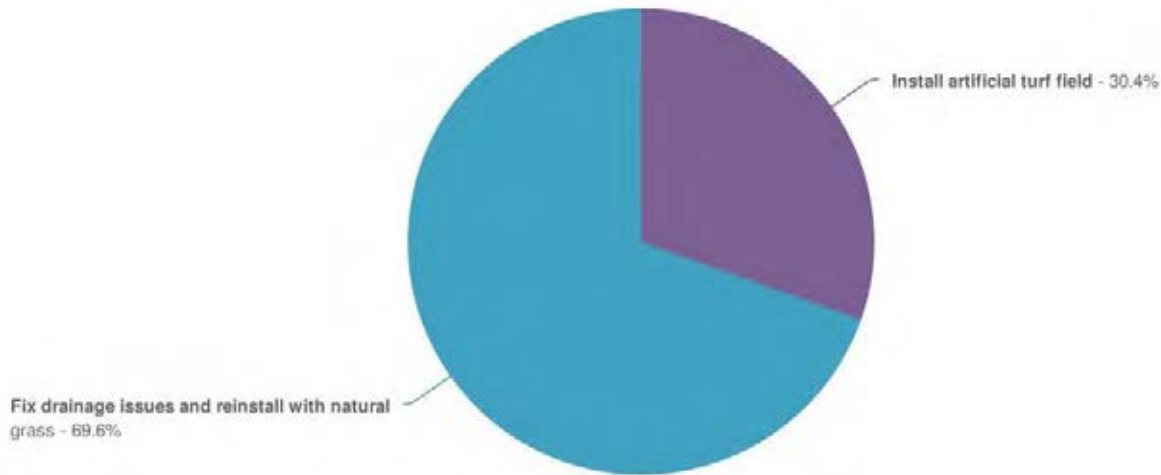




# What improvements would you make?

## Fix drainage and install grass 69.6% Art Turf 30.4%

24. The current field does not drain well. What improvement should be made?



				Statistics	
Install artificial turf field	30.4%	<div><div></div></div>	7	Total Responses	23
Fix drainage issues and reinstall with natural grass	69.6%	<div><div></div></div>	16		
Other	0.0%	<div><div></div></div>	0		
Total			23		
Responses "Other"				Count	
Left Blank				30	

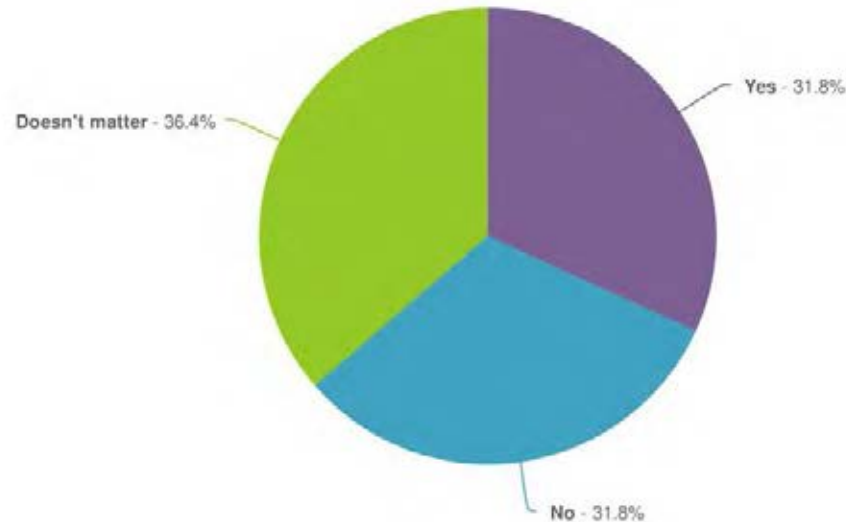




# Should batting cages be installed?

31.8 to 31.8 but 36.4% says doesn't matter

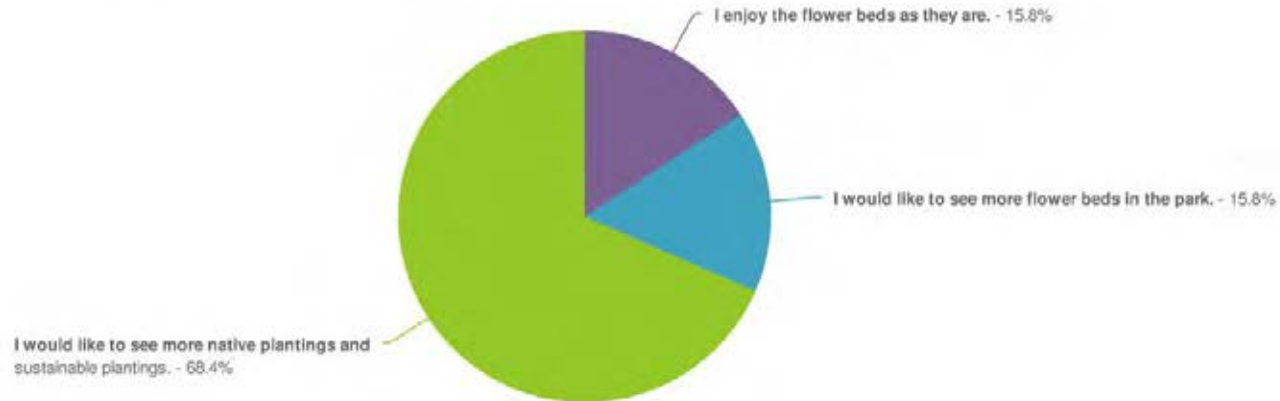
25. Should batting cages be installed adjacent to the Barrie Park baseball field?



Statistics				
Yes	31.8%	<div><div></div></div>	7	Total Responses 22
No	31.8%	<div><div></div></div>	7	
Doesn't matter	36.4%	<div><div></div></div>	8	
Total			22	

# Survey 68.4% want more native plantings

31. How do you perceive the planting beds at the entryways to the Park and Center?



## Statistics

I enjoy the flower beds as they are.	15.8%		3
I would like to see more flower beds in the park.	15.8%		3
I would like to see more native plantings and sustainable plantings.	68.4%		13
Other	0.0%		0
Total			19

Total Responses 19

## Responses "Other"

## Count

Left Blank 30



# Call for activities for young and active adults

- Add distance markers and exercise stations along the path
- Planted and Natural areas
- Exploration and Picnic areas



Barrie Fest and back-to-school party

- Stage/platform
- More electrical power





# Play Ground and Field Suggestions: Exercise Stations, Mini Spartan Course, Distance Markers



# Field Suggestions: Grasses and No Mow areas







# Play Ground and Field Suggestions :

## Seating and exercise areas that could double as seating



Seating Pod and swale



Blocks of stone for seating and exercise



Field Suggestions :  
Northern areas is very windy make it a feature







# Barrie Park Site Master Plan: Turf v Grass

## Grass versus Artificial Turf

If we want a highly functioning grass field

- To solve the grading and drainage issues at Barrie remove some of the clay and construct high sand and low organic material or similar, with a subgrade drainage system and a subgrade detention area

Or

- Remove clay and construct a gravel base of an artificial turf field with a subgrade drainage system and a subgrade detention area
- Therefore for either solution there is the cost for below grade work



# Barrie Park Site Master Plan: National Trends

## Grass versus Artificial Turf (NRPA)

- “Re-sodding can cost 20 grand per field every year, and that results in downtime as well. Turf fields are ready for play all the time.”
- “might cost \$750,000 if “carpeted” in artificial turf.”
- “But when savings in watering, mowing, fertilizing, aeration and staff hours are considered, artificial turf emerges as a cost-effective choice for fields that are heavily used without adequate “recovery” time for conventional turf.”
- However will need replacement in 10 years and patching and cleaning before that



# Barrie Park Site Master Plan: National Trends

## There are maintenance costs with Grass and Art Turf

Figures based on 80,000 square foot fields and average costs and usage rates across North America

	Natural Grass	Art Turf
<b>Maintenance:</b>	\$20,000 x 10 years = <b><u>\$200,000</u></b>	\$5,000 x 10 years = <b><u>\$50,000</u></b>
Total:	\$570,000	\$750,000
<b>Scheduling Possibilities:</b>	25 hours x 25 weeks x 10 years = <b><u>6,250 hours</u></b>	68 hours x 44 weeks x 10 years = <b><u>29,920 hours</u></b>
Average Cost Per Hour of Use:	\$91.20	\$25.07





# Barrie Park Site Master Plan: Art Turf Research

Representatives of the Chicago Park District stated:

- Most of our artificial fields are not fenced
- Those that are become impromptu dog parks leading to health issues
- We fence near major roads for safety
- Latest field in Humboldt Park is not fenced
- Have to cover the field with wooden flats for events
- If not fields will get damaged
- Even simple things such as chairs can damage the surface and then it needs patching and replacement
- If not fenced expect more maintenance and replacement



# Barrie Park Site Master Plan: Art Turf Research

## Humboldt Park



The 'fenceless' Humboldt Park soccer field – one of the ten 'Take the Field' soccer fields in the City of Chicago

Courtesy of Randy Machelski  
smith group jjr

Barrie Park - Park District of Oak Park



# Artificial Turf Field



Barrie Park - Park District of Oak Park

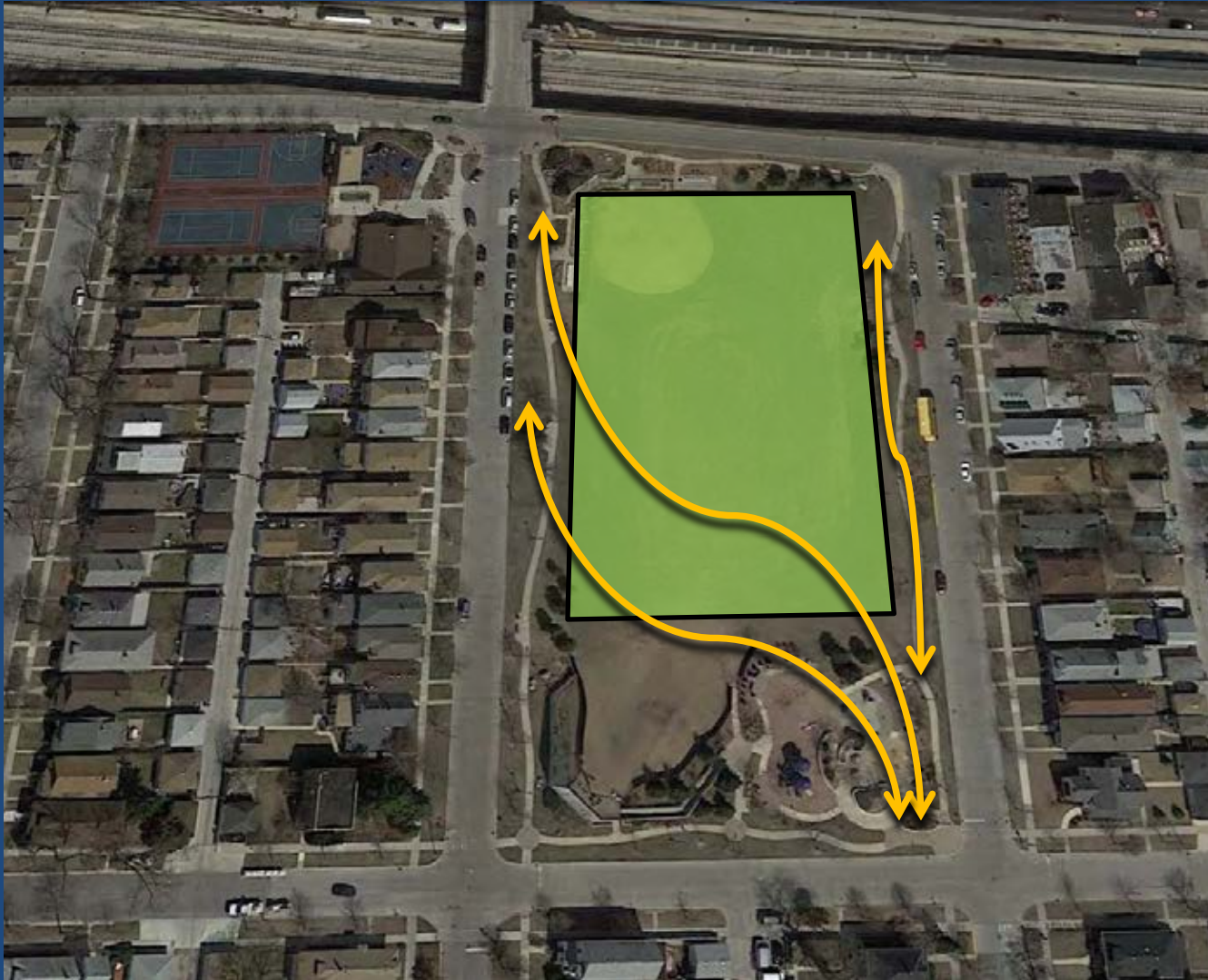


# Artificial Turf Field if fenced





People cross the park to Lombard, the station and to cross the Ike; park is used for events, exercise and passive activities







Fence in way of sledding and soil could erode into art turf field  
PDOP removed the sled hill at Ridgeland to prevent mixing







Field used for Barrie Fest

No food sold at Fest. Food could be an issue with art turf



Barrie Park - Park District of Oak Park





A resident stated  
“The Fest could take place on Lombard and part of the park”





Dogs are well loved by community  
but there are real problems with dog waste  
“For some of us, this is a constant clean-up problem.”







# Barrie Park Site Master Plan: Art Turf Research

## Dog Waste and Art Turf

“Dog waste has been shown to cling to the fibers of artificial turf longer than grass.” STMA

“Our field designers acknowledge this is a problem in isolated areas where fields are the primary open green space in the neighborhood. ....

We place required signage strategically in all the parks with artificial turf fields stating “dogs are prohibited on sports field turf areas”.

Courtesy of Randy Machelski  
smith group jjr



# Barrie Park Site Master Plan: Grass Maintenance

## Grass Field Example (Sports Turf Managers Association)

Denver-area grass sand modified field with 4 varieties of Kentucky bluegrass,

hosts 35 games and 10 other events,

spends \$9,000-\$11,000 annually on material costs and will require 750 labor hours per year for general maintenance.



# Barrie Park Site Master Plan: Local Art Turf

Currently the artificial turf fields at the High School, Ridgeland and Irving are all fenced and controlled

What is the PDOP position on fencing art turf fields?

Reaction to resident who asked “can the PDOP carry out this level of maintenance?”





# Scheme 1

## Artificial turf field

- 2 BB fields & Large U11-12 Soccer
- Open up entries (partial)
- Move northern path into park
- Add Picnic groves
- Improve grading and drainage
- Add Seating Areas
- Add exercise stations
- Exercise Stairs
- Lower height of hill/reduce erosion
- Add small hill/ training slope
- Enlarged Play Ground
- Multi-use plazas





## Scheme 2

- Add second Ball Field
- Change soccer alignment  
small U11-12
- Open up entries (partial)
- Move northern path into park
- Improve grading and drainage
- Add Seating Areas
- Add exercise stations
- Exercise stairs
- Lower height of hill/reduce erosion
- Add small hill/ training slope
- Enlarged Play Ground
- Multi-use plazas





## Scheme 3

- Small U11-12 & 1 Base Ball Field
- Open up entries
- Add rain gardens
- Move northern path into park
- Add Picnic groves on west side
- Improve grading and drainage
- Move Ball Field to open up NW
- Add Batting Cages
- Adding exercise stations
- Adding Seating Areas
- Exercise Stairs
- Lower height of hill/reduce erosion
- Add small hill/ training slope
- Enlarged Play Ground
- Multi-use plazas







## Scheme 4

- Small U11-12 & 1 Base Ball Field
- Open up entries
- Add rain gardens
- Move northern path into park  
only partial due to back stop
- Move Ball Field to open up NW  
and join Center and Park
- Add large and small picnic groves
- Improve grading and drainage
- Add exercise stations
- Add Seating Areas
- Exercise Stairs
- Lower height of hill/reduce erosion
- Add small hill/ training slope
- Enlarged Play Ground
- Multi-use plazas





## Scheme 5

- Small U11-12 & 1 Base Ball Field
- Open up entries
- Add rain gardens
- Move northern path into park
- Add Northern mounds/woods
- Add Picnic groves
- Improve grading and drainage
- Move Ball Field to open up NW
- Add Batting Cages
- Change soccer alignment  
could remain N-S w/ adjustment
- Add exercise stations
- Add Seating Areas
- Exercise Stairs
- Reduce height of hill/reduce erosion
- Enlarged Play Ground
- Add small hill/ training slope
- Multi-use plazas

Barrie Park - Park District of Oak Park





## Scheme 6

- Small U11-12 & 1 Base Ball Field
- Create a large valley at northern end
- Add rain gardens
- Move northern path into park
- Add Picnic groves
- Improve grading and drainage
- Move Ball Field to open up NW
- Add Batting Cages
- Play grounds move north behind back
- Change soccer alignment
- Add exercise stations
- Add Seating Areas
- Add smaller sled hills
- Exercise Stairs on either end of sled h
- Multi-use plazas







# Northern mounds and trees

Plant aspen for quick growth with other species



Barrie Park - Park District of Oak Park



# Northern mounds and trees

Plant aspen for quick growth with other species



Barrie Park - Park District of Oak Park



# Schemes 1, 2, 3





# Schemes 4, 5, & 6





# Barrie Park Site Master Plan



THANK YOU  
NOW YOUR COMMENTS



# Barrie Park Site Master Plan: Agenda

Ideas may strike you later you can email Diane at  
[Diane.Stanke@pdop.org](mailto:Diane.Stanke@pdop.org)

There will be a survey on Park District Website  
<http://www.pdop.org>

and go to  
<http://www.pdop.org/about/park-planning-projects>  
for this presentation





# Barrie Park Site Master Plan: Process

**Posted Friday March 13th**  
**Closes Friday March 20th**

**2<sup>nd</sup> Questionnaire posted (with site concepts)**

Monday March 16<sup>th</sup>

Altamanu to present concepts to P. D. Citizen Committee

Thursday March 19<sup>th</sup>

Altamanu to present concepts to Park Board

**Wednesday April 22nd, at 7pm**

**Community Mtg #3 Draft Recs Barrie Center**

**Date TBD**

**Community Mtg #4, if necessary, to present revisions**

Thursday June 4th

Altamanu to present recommendation and cost estimate to Board at Committee Meeting at the Conservatory

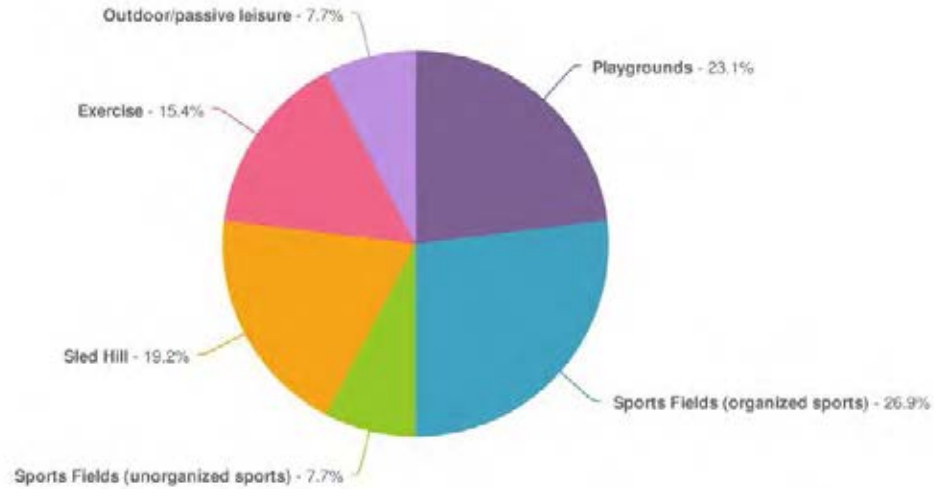
Monday June 18<sup>th</sup>

Park Board to consider accepting final plan at regular Park Board meeting, 218 Madison Street.



Barrie Park - Park District of Oak Park

## 6. What is your primary activity/purpose to visit Barrie Park?



### Statistics

Barrie Center	0.0%		0
Playgrounds	23.1%		6
Sports Fields (organized sports)	26.9%		7
Total			26
Sports Fields (unorganized sports)	7.7%		2
Sled Hill	19.2%		5
Exercise	15.4%		4
Outdoor/passive leisure	7.7%		2
Other	0.0%		0
Total			26

Total Responses 26





# Barrie Park Site Master Plan: Tree Survey

Tree population at Barrie Park mainly younger trees.

Bald cypress, Crabapple, Norway Spruce, River Birch, Austrian Pine

Trees generally in good condition

1 River Birch tree in the playground in decline

Green Ash EAB infested. Monitor and eventually remove